

**THE PORTUGUESE AMERICAN CITIZENSHIP PROJECT**  
**A NON-PARTISAN INITIATIVE TO PROMOTE CITIZENSHIP AND CIVIC INVOLVEMENT**

**THE PORTUGUESE ORGANIZATION  
FOR SOCIAL SERVICES AND OPPORTUNITIES  
SAN JOSE, CALIFORNIA**



**EVALUATION OF THE 2006 ELECTIONS**

**July 6, 2007**

**SUPPORTED BY THE**  
**LUSO-AMERICAN**  
**FOUNDATION**

# REPORT CONTENTS

- **STATISTICS AND SUMMARY OF WORK** 3
- **RESULTS** 4
- **RECOMMENDATIONS** 7
- **APPENDIX** 8

## KEY STATISTICS

- **Number of Members: 2,703**
- **Heads of Household registered to vote: 667 (25% of all members)**
- **All Household Members registered to vote: 1,234**
- **Heads of Household voter turnout\* in June 2006 – 59% (county-wide turnout 53%)**
- **Heads of Household voter turnout in November 2006 – 80% (county-wide turnout 72%)**

## SUMMARY OF WORK

The Portuguese Organization for Social Services and Opportunities (POSSO) has been an active participant in the Portuguese American Citizenship Project since late 2002.

For the June 2006 Primary Elections and the November 2006 General Elections, postcards in Portuguese and English were sent to every registered voter in the organization reminding them of the date and polling hours for each election.

---

\* Voter turnout is the number of citizens voting in an election divided by the total number of citizens registered to vote. Voter turnout for each election is based on Santa Clara county residents only.

## RESULTS

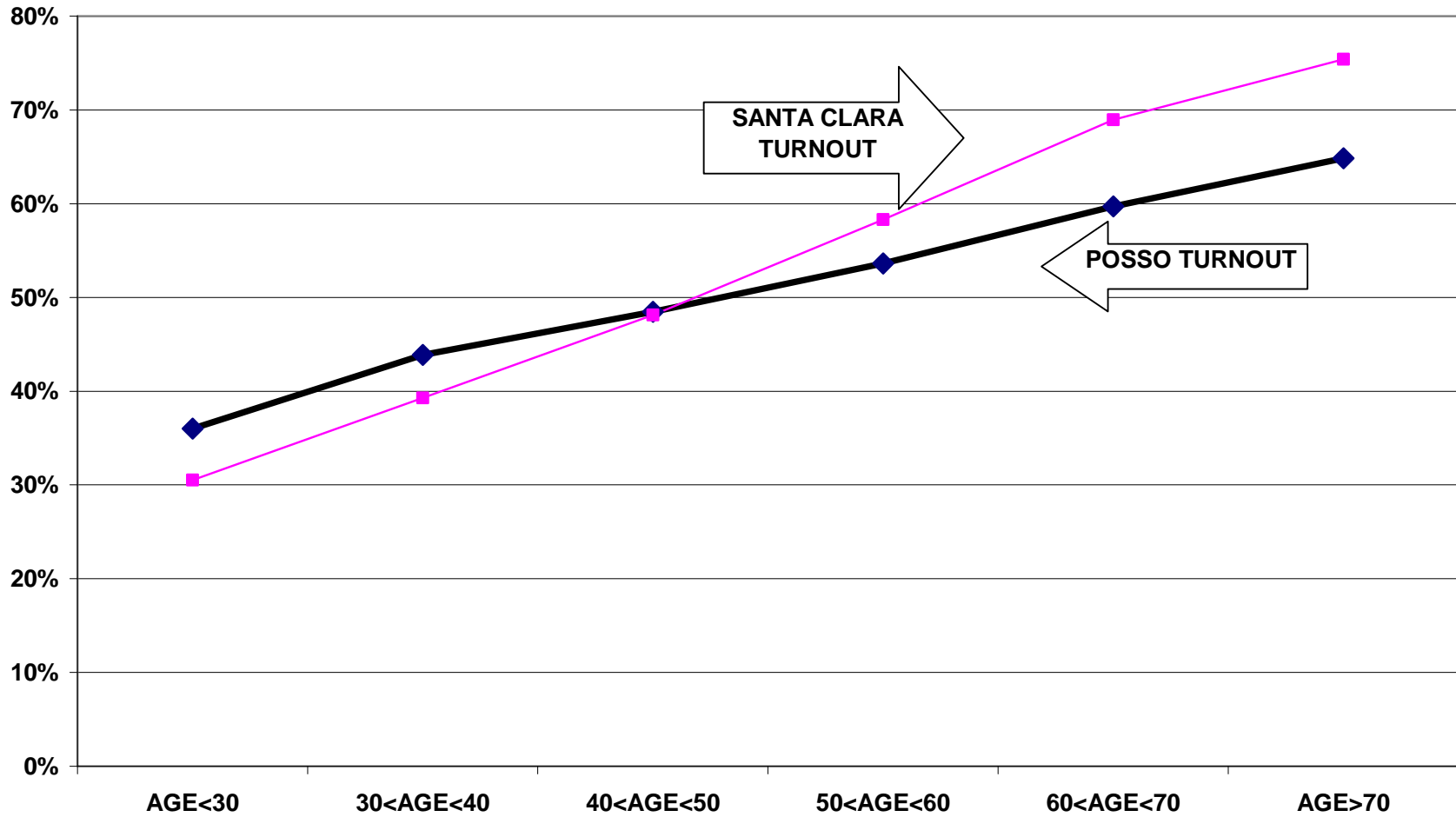
The POSSO heads of household voter turnout was higher than the countywide turnout in the June 2006 Primary Election and the November 2006 General Election. Heads of household turnout for the June 2006 Primary Elections was 59%, as compared to the county turnout of 53%. POSSO heads of household turnout for the November 2006 General Election was 80%, as compared to the county turnout of 72%.

Voter turnout is not uniform across age groups. Voters under 30 years of age and even those between 30 and 40 years old had lower turnout rates than the older voters. This is true for registered voters in the organization and true among registered voters in the community at large.

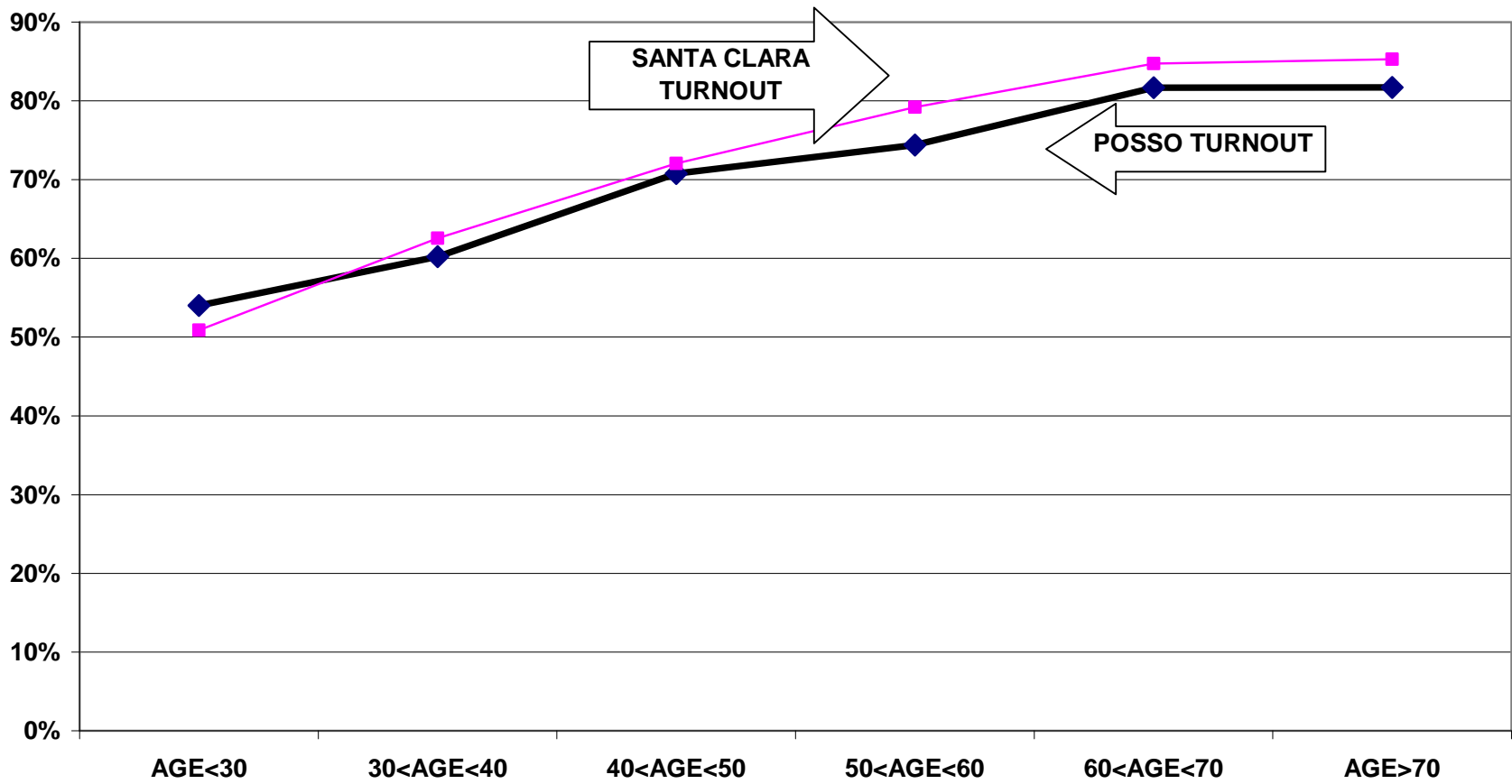
For example, registered voters that are associated with the organization under 30 years old had a 36% turnout rate in the June 2006 elections while those between 60 and 70 years old had a 60% turnout rate. For the November 2006 elections, the under 30 years old associated voters had a 54% turnout rate compared to an 82% turnout rate among those between 60 and 70 years old.

The following graphs for the June and November 2006 elections illustrate the relationship between turnout rates and age. These graphs refer to all family members associated with POSSO, not just heads of household.

**TURNOUT BY AGE JUNE 2006**  
**THE PORTUGUESE ORGANIZATION FOR SOCIAL SERVICES AND OPPORTUNITIES**  
**ALL HOUSEHOLD MEMBERS**



**TURNOUT BY AGE NOVEMBER 2006**  
**THE PORTUGUESE ORGANIZATION FOR SOCIAL SERVICES AND OPPORTUNITIES**  
**ALL HOUSEHOLD MEMBERS**



## RECOMMENDATIONS

- The organization should consider a voter registration drive to increase the percentage of members registered to vote. Currently only 25% of all POSSO members are registered voters.
- The organization should examine measures to increase voter turnout in the under 30 year old and 30 to 40 year old categories. While low voter turnout rates for those under 40 years old is not a problem unique to POSSO, it is important to discuss ways the organization can address this issue so as to increase their efforts towards active citizenship.

# APPENDIX

- Historical Data 9
- Registered Voter Turnout Bar Graph 10
- Difference in Voter Turnout Bar Graph 11
- Registered Voters vs. Actual Voters June 2006 Bar Graph 12
- Registered Voters vs. Actual Voters November 2006 Bar Graph 13

**HISTORICAL DATA – POSSO  
REGISTRATION - VOTING**

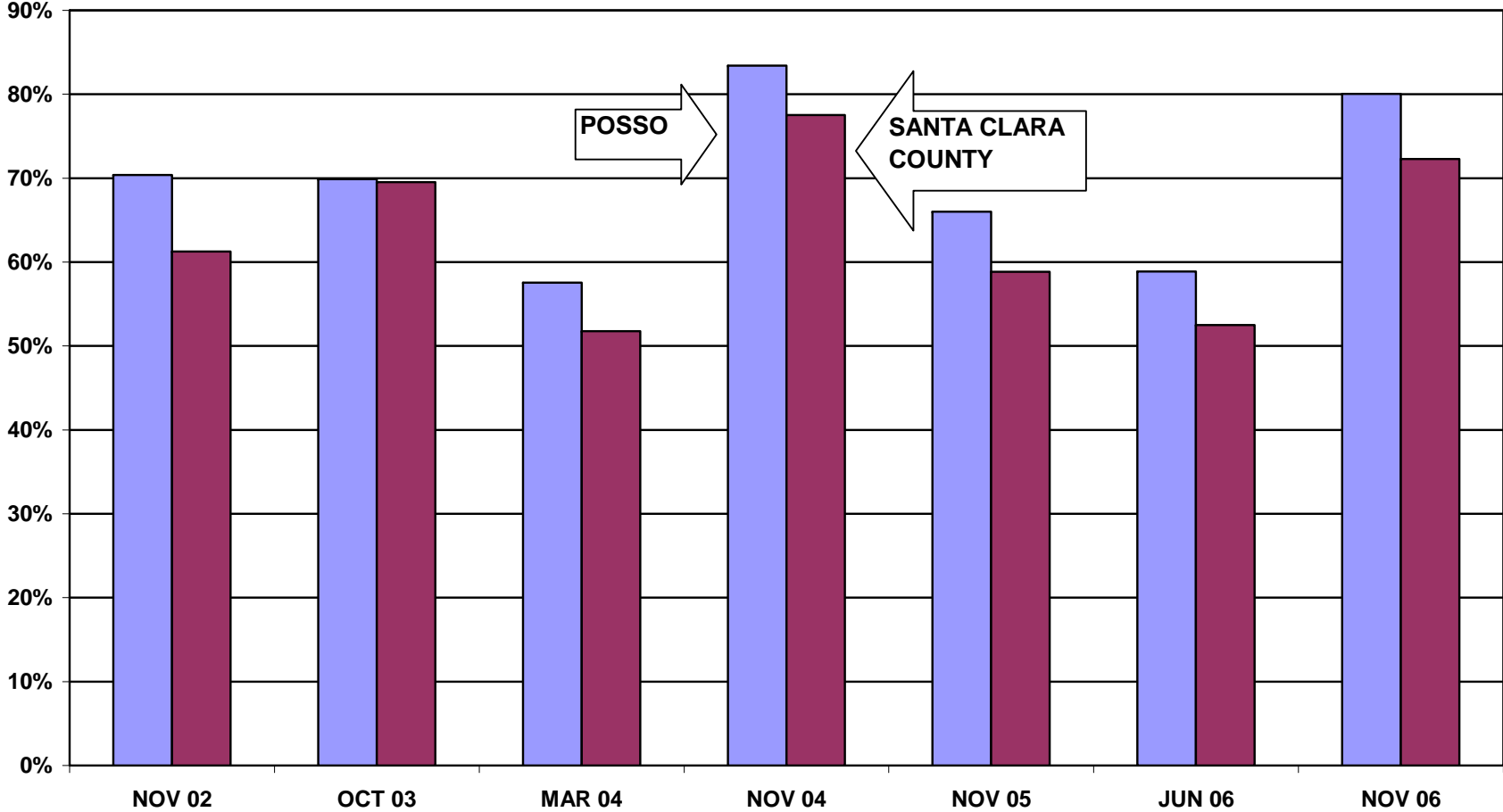
<b>TOTAL MEMBERS</b>	<b>2703</b>
<b>MEMBERS REGISTERED TO VOTE IN COUNTY OF SANTA CLARA</b>	<b>667 HEADS OF HOUSEHOLD</b>
	<b>1234 ALL FAMILY MEMBERS</b>

**VOTING PERFORMANCE OF SANTA CLARA COUNTY RESIDENTS**

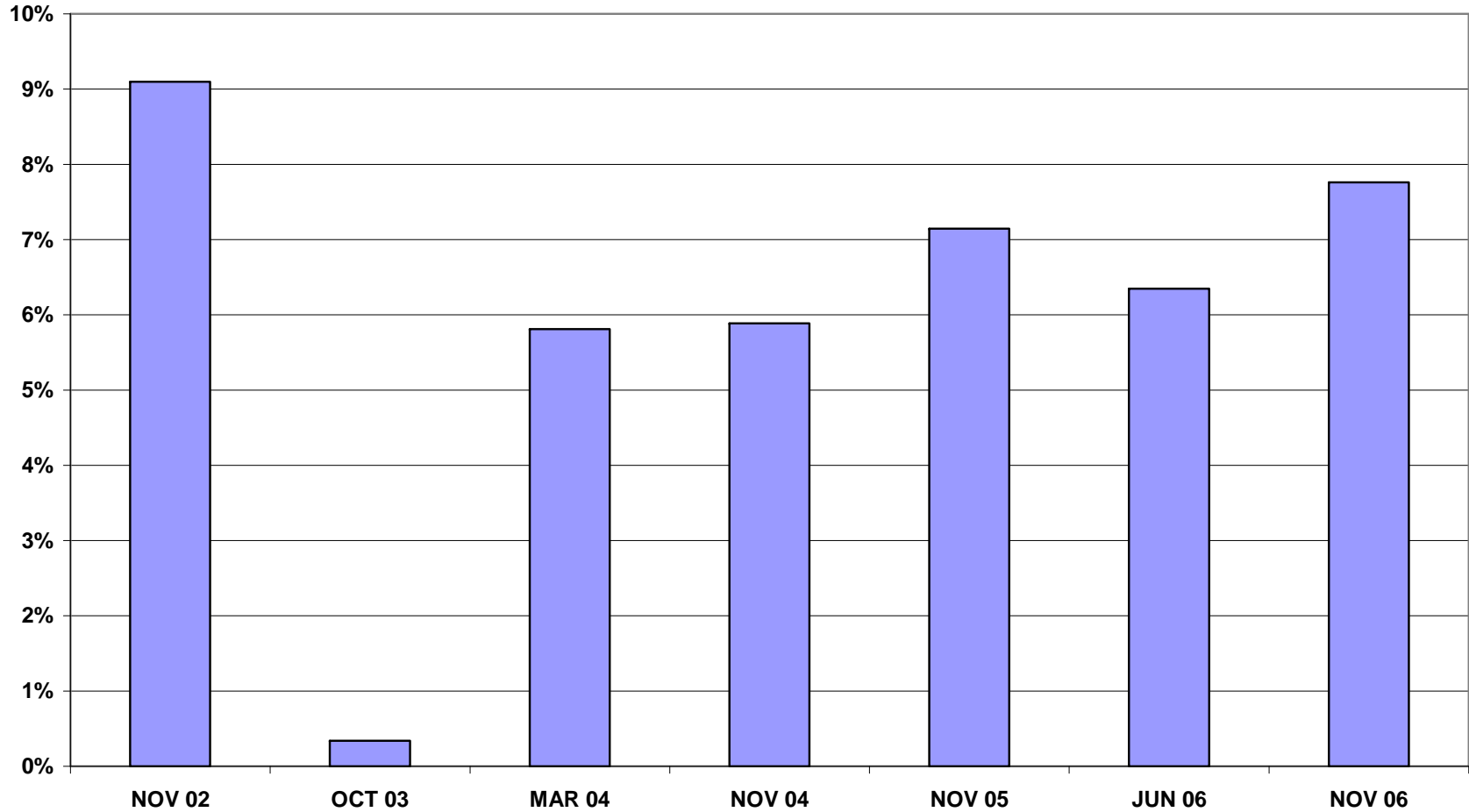
	<b>HEADS OF HOUSEHOLD</b>	<b>AS PERCENT OF ALL REGISTERED MEMBERS ELIGIBLE TO VOTE</b>	<b>COUNTY WIDE VOTING HISTORY AS PERCENT OF ALL REGISTERED VOTERS</b>
		<b>COMPARABLE STATISTICS</b>	
<b>VOTERS NOV 2002</b>	<b>418</b>	<b>70.3%</b>	<b>61.3%</b>
<b>VOTERS OCT 2003</b>	<b>434</b>	<b>69.8%</b>	<b>69.5%</b>
<b>VOTERS MAR 2004</b>	<b>362</b>	<b>57.5%</b>	<b>51.7%</b>
<b>VOTERS NOV 2004</b>	<b>573</b>	<b>83.4%</b>	<b>77.5%</b>
<b>VOTERS NOV 2005</b>	<b>460</b>	<b>66.0%</b>	<b>58.9%</b>
<b>VOTERS JUN 2006</b>	<b>392</b>	<b>58.9%</b>	<b>52.5%</b>
<b>VOTERS NOV 2006</b>	<b>533</b>	<b>80.0%</b>	<b>72.3%</b>

Note: Voting statistics for the 2006 elections are based on registration data from June 2007

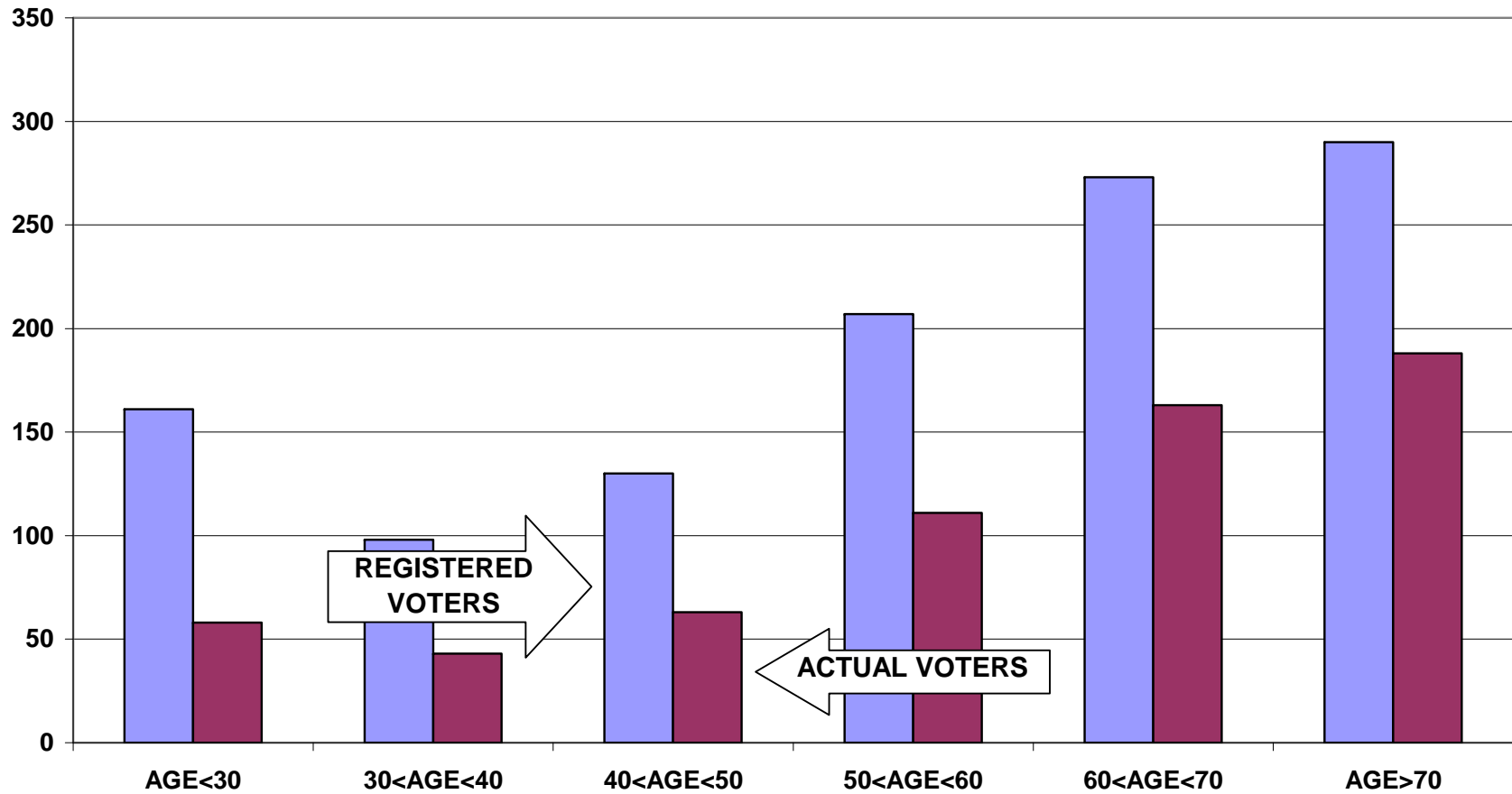
**REGISTERED VOTER TURNOUT  
COMPARISON OF SANTA CLARA COUNTY AND THE PORTUGUESE ORGANIZATION  
FOR SOCIAL SERVICES AND OPPORTUNITIES  
HEADS OF HOUSEHOLD**



**DIFFERENCE IN VOTER TURNOUT BETWEEN  
THE PORTUGUESE ORGANIZATION FOR SOCIAL SERVICES AND OPPORTUNITIES  
VOTERS AND SANTA CLARA COUNTY VOTERS  
HEADS OF HOUSEHOLD**



**REGISTERED VOTERS VERSUS ACTUAL VOTERS JUNE 2006**  
**THE PORTUGUESE ORGANIZATION FOR SOCIAL SERVICES AND OPPORTUNITIES**  
**ALL HOUSEHOLD MEMBERS**



**REGISTERED TURNOUT VERSUS ACTUAL TURNOUT NOVEMBER 2006  
THE PORTUGUESE ORGANIZATION FOR SOCIAL SERVICES AND OPPORTUNITIES  
ALL HOUSEHOLD MEMBERS**

