

THE PORTUGUESE AMERICAN CITIZENSHIP PROJECT
A NON-PARTISAN INITIATIVE TO PROMOTE CITIZENSHIP AND CIVIC INVOLVEMENT

SUPREME COUNCIL OF S.E.S.
SANTA CLARA COUNTY, CA

EVALUATION
OF
THE 2006 ELECTIONS

July 3, 2007

SUPPORTED BY THE
LUSO-AMERICAN
FOUNDATION

REPORT CONTENTS

- **STATISTICS AND SUMMARY OF WORK** 3
- **RESULTS** 4
- **RECOMMENDATIONS** 7
- **APPENDIX** 8

KEY STATISTICS

- **Number of Members: 193**
- **Heads of Household registered to vote: 78 (40% of all members)**
- **All Household Members registered to vote: 126**
- **Voter Turnout* in June 2006 – 62% (countywide turnout 53%)**
- **Voter Turnout in November 2006 – 79% (countywide turnout 72%)**

SUMMARY OF WORK

The Supreme Council of S.E.S. has been an active participant in the Portuguese American Citizenship Project since late 2002.

For the June 2006 Primary Elections and the November 2006 General Elections, postcards in Portuguese and English were sent to every registered voter in the organization reminding them of the date, polling hours, and location of the assigned polling station for each election.

* Voter turnout is the number of citizens voting in an election divided by the total number of citizens registered to vote. Voter turnout for each election is based on Santa Clara county residents only.

RESULTS

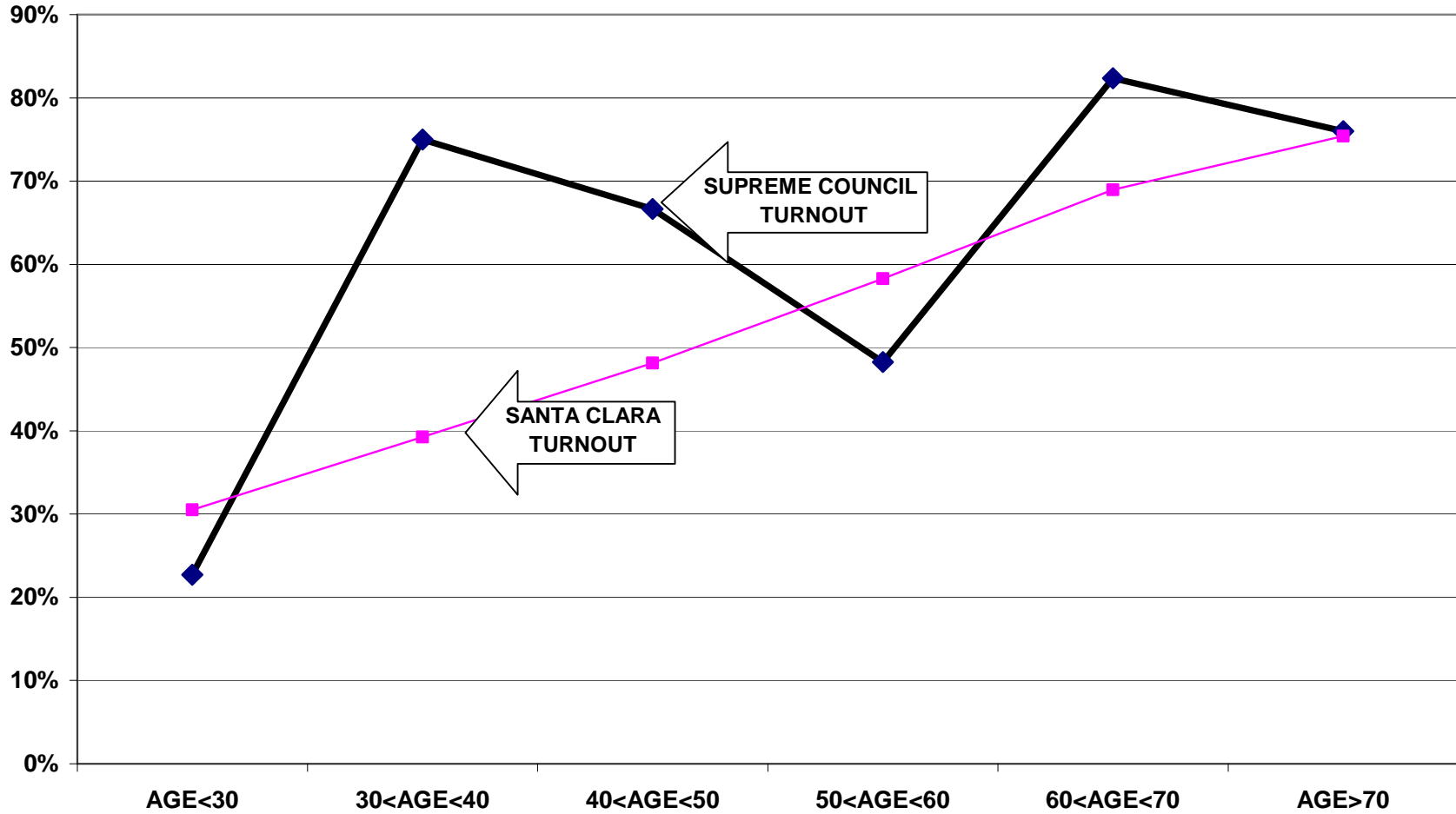
The Supreme Council of S.E.S. heads of household voter turnout was higher than the countywide turnout in the June 2006 Primary Election and the November 2006 General Election. Heads of household turnout for the June 2006 Primary Elections was 62%, as compared to the county turnout of 53%. The Supreme Council of S.E.S. heads of household turnout for the November 2006 General Election was 79%, as compared to the county turnout of 72%.

Voter turnout is not uniform across the age groups. Voters under 30 years of age and even those between 30 and 40 years old had lower turnout rates than the older voters. This is true for the registered voters in the organization and true for the registered voters in the community at large.

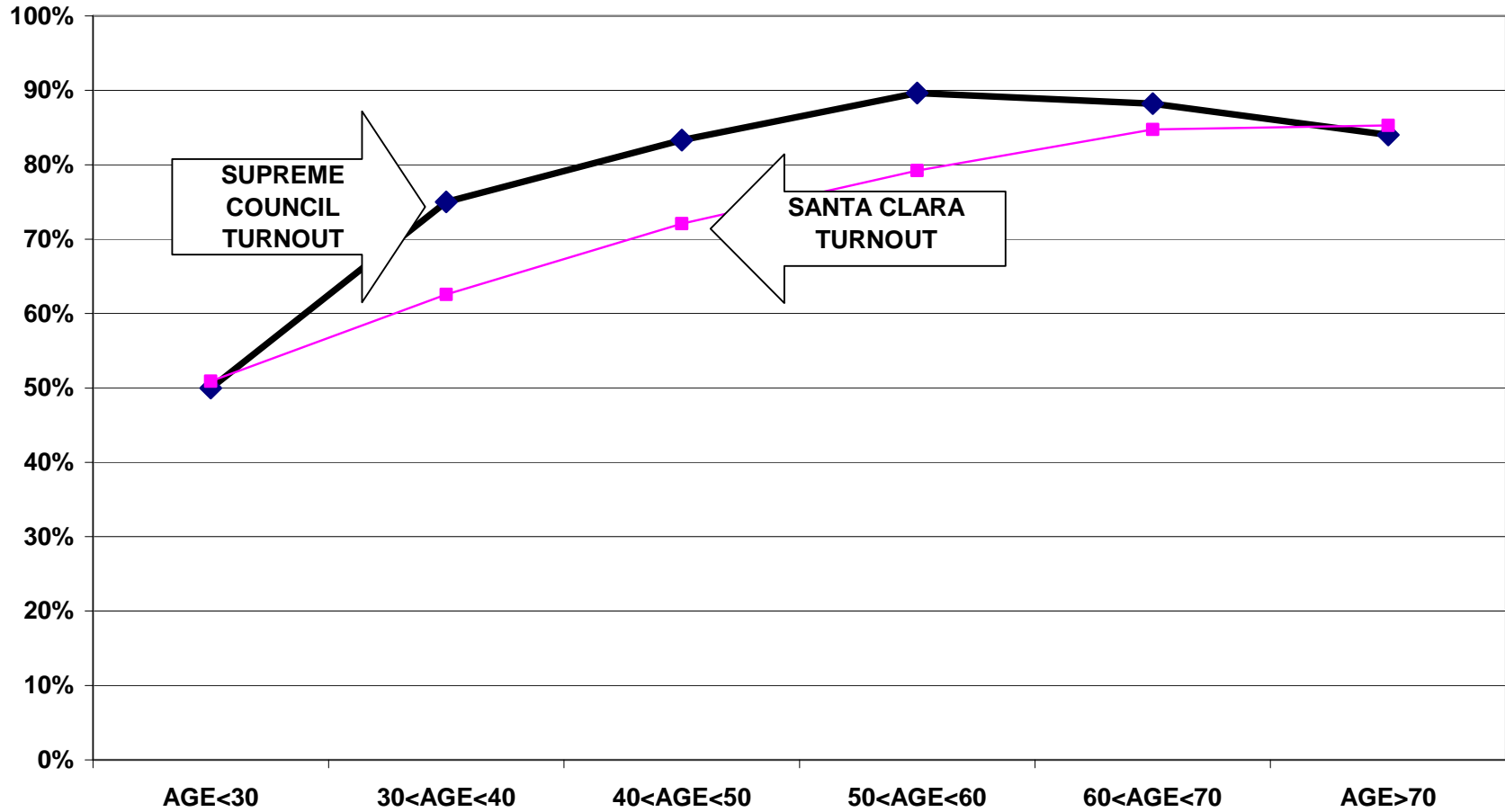
For example, voters associated with the group under 30 years old had a 23% turnout rate in the June 2006 elections while voters between 60 and 70 years old had an 82% turnout rate. For the November 2006 elections, the under 30 year old associated members had a 50% turnout rate compared to an 88% turnout rate for voters between 60 and 70 years old.

The following graphs for the June and November elections illustrate the relationship between turnout rates and age. These graphs refer to all family members associated with the organization, not just heads of household.

TURNOUT BY AGE JUNE 2006 SUPREME COUNCIL OF S.E.S. ALL HOUSEHOLD MEMBERS



**TURNOUT BY AGE NOVEMBER 2006
SUPREME COUNCIL OF S.E.S.
ALL HOUSEHOLD MEMBERS**



RECOMMENDATIONS

- The corporation should examine ways to increase its overall voter turnout rate. While the corporation has done an excellent job of consistently outvoting the county, the difference between the Supreme Council of S.E.S. turnout and the Santa Clara county turnout has steadily become smaller. Voters in the older categories consistently outvote the younger voter categories. This issue should be addressed so as to increase voting turnout for the younger age groups.
- In order to revive group commitment in a strong turnout, the corporation should consider repeating the steps taken when the get-out-the-vote campaign was begun in 2002; sending letters to every group family reminding them of the group's involvement in the Citizenship Project and encouraging voter registration for members who are citizens but have not yet registered.

APPENDIX

- Historical Data 9
- Registered Voter Turnout Bar Graph 10
- Difference in Voter Turnout Bar Graph 11
- Registered Voters vs. Actual Voters June 2006 Bar Graph 12
- Registered Voters vs. Actual Voters November 2006 Bar Graph 13

**HISTORICAL DATA: SUPREME COUNCIL OF S.E.S.
REGISTRATION - VOTING**

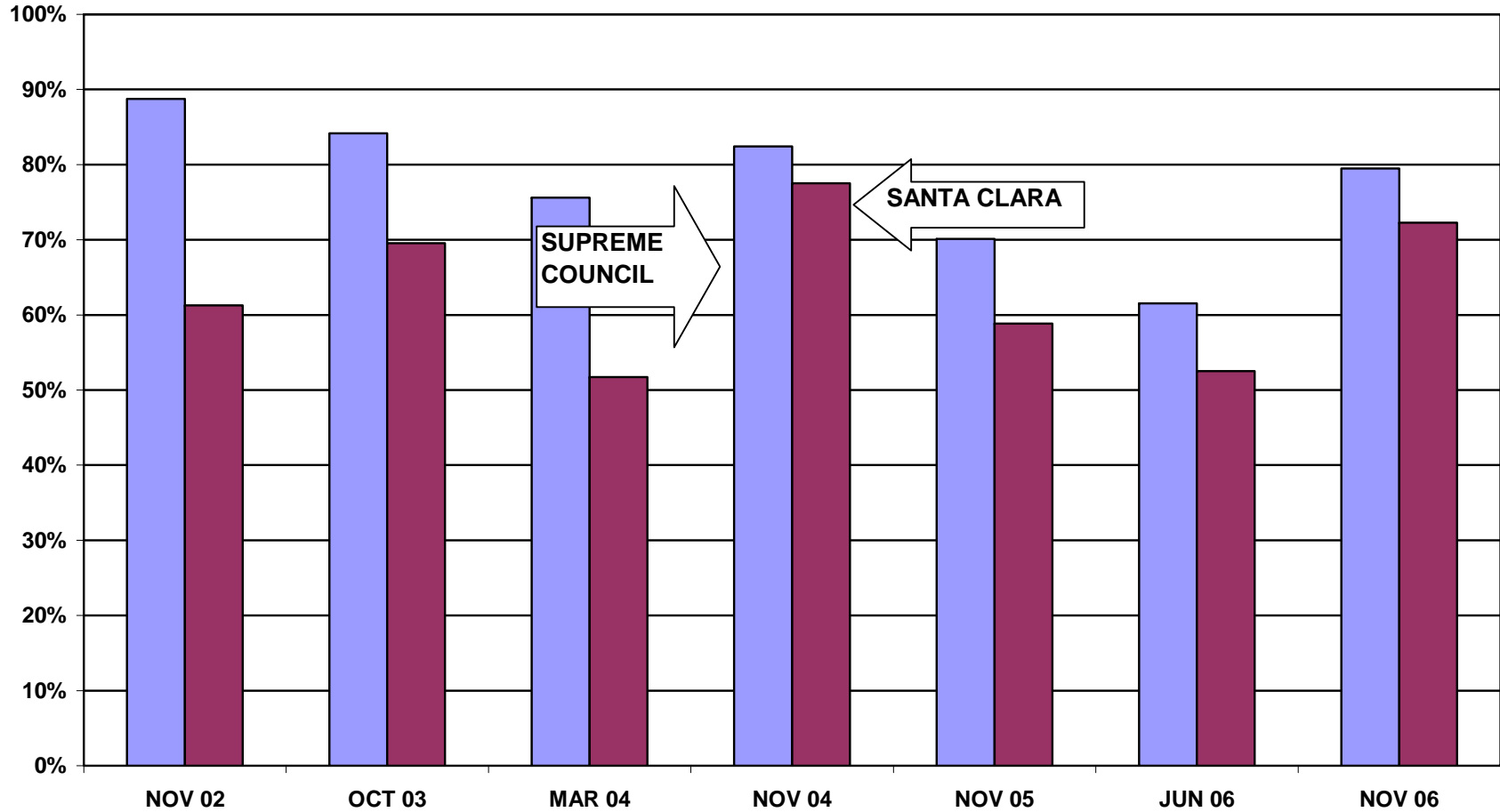
MEMBERS	193
MEMBERS REGISTERED TO VOTE IN COUNTY OF SANTA CLARA	78 HEADS OF HOUSEHOLD
	126 ALL FAMILY MEMBERS

VOTING PERFORMANCE OF SANTA CLARA RESIDENTS

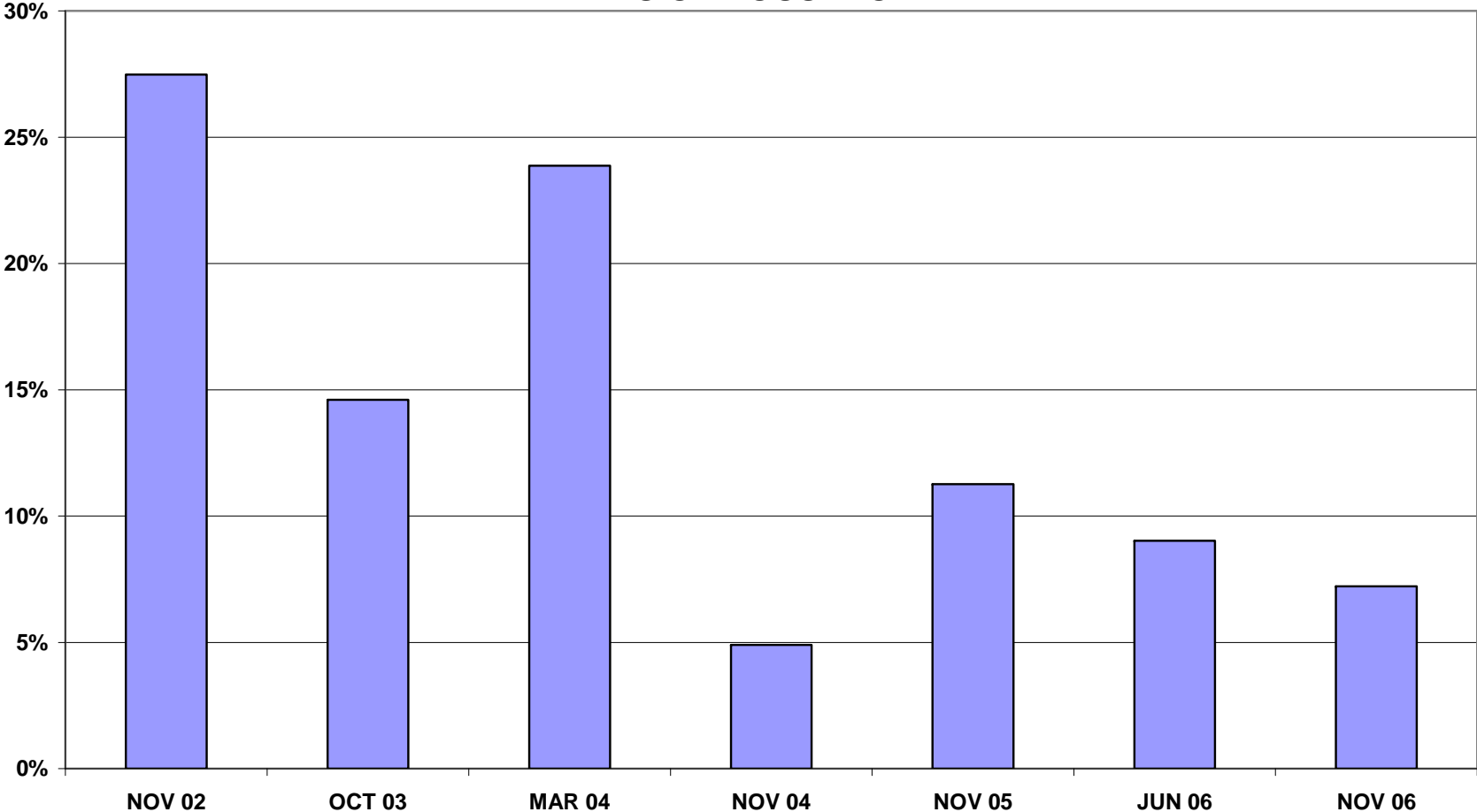
	HEADS OF HOUSEHOLD	AS PERCENT OF ALL REGISTERED MEMBERS ELIGIBLE TO VOTE	COUNTYWIDE VOTING HISTORY AS PERCENT OF ALL REGISTERED VOTERS
		COMPARABLE STATISTICS	
VOTERS NOV 2002	71	88.8%	61.3%
VOTERS OCT 2003	69	84.1%	69.5%
VOTERS MAR 2004	62	75.6%	51.7%
VOTERS NOV 2004	75	82.4%	77.5%
VOTERS NOV 2005	61	70.1%	58.9%
VOTERS JUN 2006	48	61.5%	52.5%
VOTERS NOV 2006	62	79.5%	72.3%

Note: Voting statistics for November 2006 are based on registration statistics from May 2007

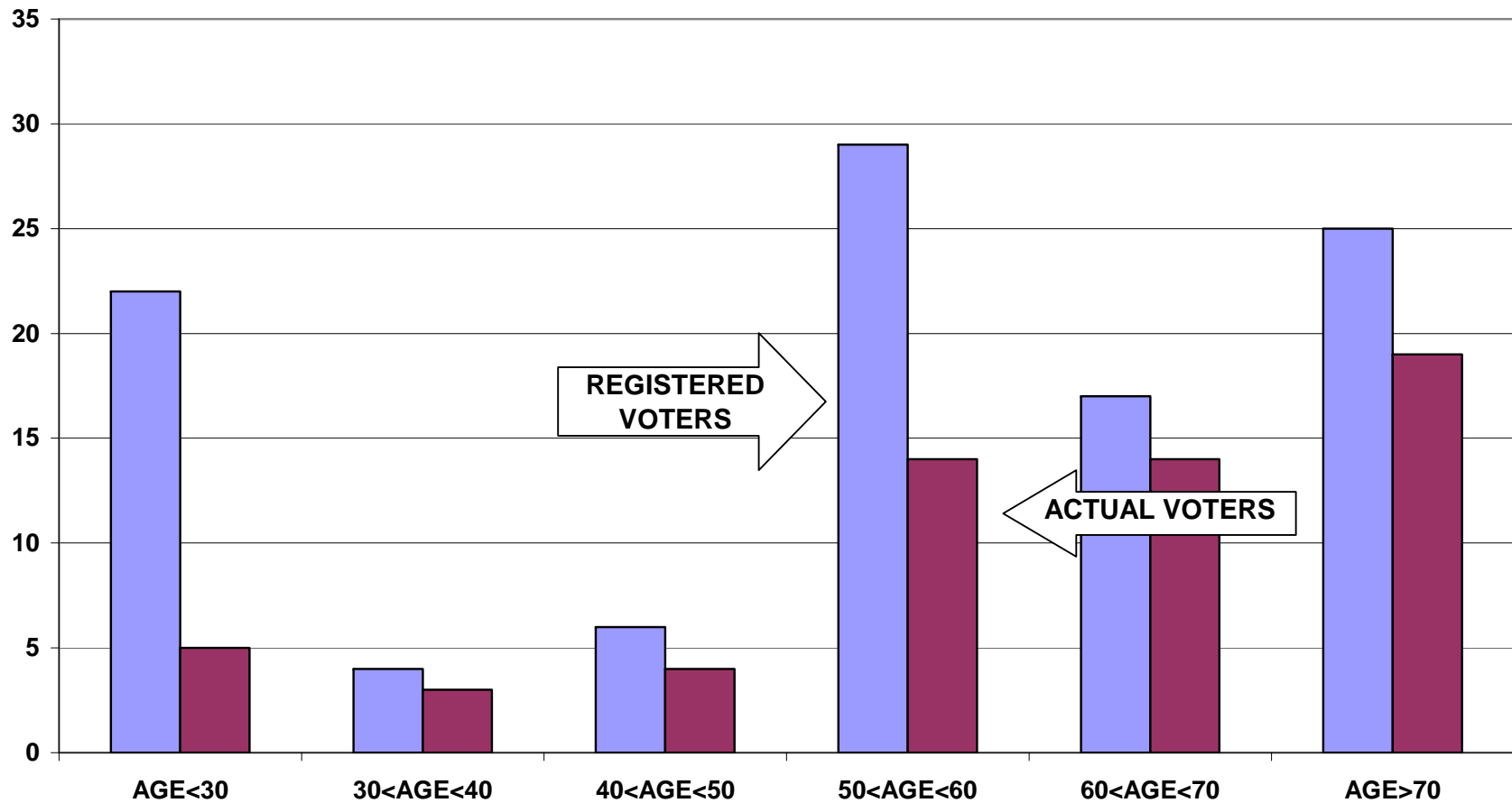
REGISTERED VOTER TURNOUT COMPARISON OF SANTA CLARA COUNTY AND SUPREME COUNCIL OF S.E.S. HEADS OF HOUSEHOLD



**DIFFERENCE IN VOTER TURNOUT BETWEEN
SUPREME COUNCIL OF S.E.S VOTERS AND
SANTA CLARA COUNTY VOTERS
HEADS OF HOUSEHOLD**



REGISTERED VOTERS VERSUS ACTUAL VOTERS JUNE 2006
SUPREME COUNCIL OF S.E.S.
ALL HOUSEHOLD MEMBERS



REGISTERED VOTERS VERSUS ACTUAL VOTERS NOVEMBER 2006
SUPREME COUNCIL OF S.E.S.
ALL HOUSEHOLD MEMBERS

