

THE PORTUGUESE AMERICAN CITIZENSHIP PROJECT
A NON-PARTISAN INITIATIVE TO PROMOTE CITIZENSHIP AND CIVIC INVOLVEMENT



SANTO CRISTO PARISH
FALL RIVER, MA

EVALUATION
OF
THE 2007-2008 ELECTIONS

March 18, 2008

SUPPORTED BY THE
LUSO-AMERICAN
FOUNDATION

REPORT CONTENTS

- **STATISTICS AND SUMMARY OF WORK** 3
- **RESULTS** 4
- **RECOMMENDATIONS** 8
- **APPENDIX** 9

KEY STATISTICS

- **Number of Parishioners: 3,893**
- **Heads of Household registered to vote in Fall River: 1,267 (33% of all parishioners)**
- **All Household Members registered to vote in Fall River: 2,085**
- **Heads of Household voter turnout* in September 2007 – 57% (citywide turnout 33%)**
- **Heads of Household voter turnout in November 2007 – 58% (citywide turnout 38%)**
- **Heads of Household voter turnout in February 2008 – 61% (citywide turnout 37%)**

SUMMARY OF WORK

Santo Cristo has been an active participant in the Portuguese American Citizenship Project since the Summer of 2000.

For the Fall 2007 City Elections, postcards in Portuguese and English were sent to every registered parish voter reminding them of the date, polling hours, and location of the assigned polling station for the election. Cards were not sent out for February 2008 Presidential Primary Elections.

* Voter turnout is the number of citizens voting in an election divided by the total number of citizens registered to vote. Voter turnout statistics are based on Fall River residents only.

RESULTS

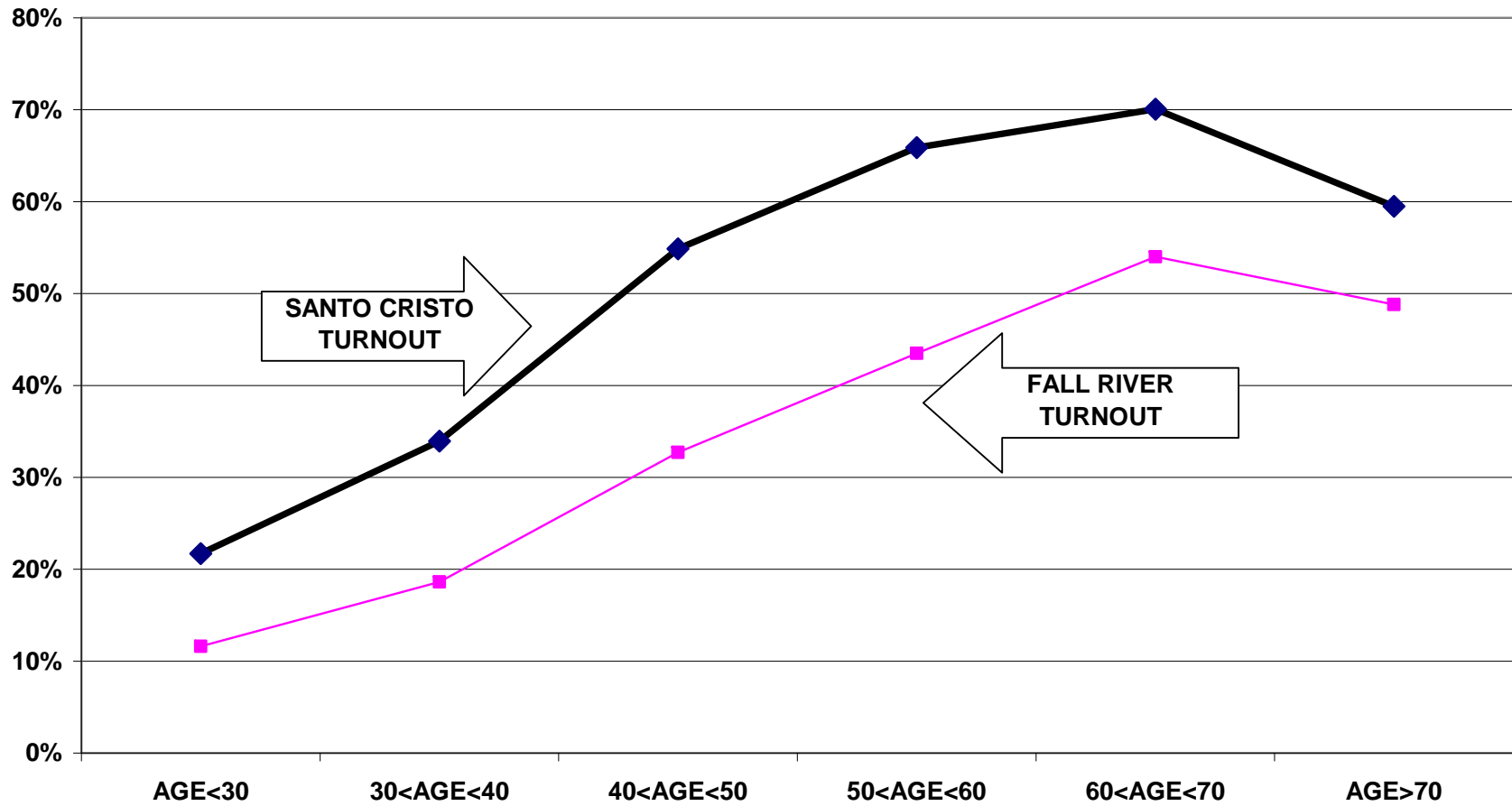
The Santo Cristo voter turnout for the Fall 2007 elections was consistently higher than citywide turnout. Heads of household turnout for the September 2007 City Primary Elections was 57%, as compared to the city turnout of 33%. The Santo Cristo heads of household turnout for the November 2007 General City Elections was 58%, as compared to the city turnout of 38%. Heads of household turnout for the February 2008 Presidential Primary Elections was 61%, as compared to the city turnout of 37%.

Voter turnout is not uniform across age groups. Voters under 30 years of age and even those between 30 and 40 years old had lower turnout rates than the older voters. This is true for the registered voters in the parish and true for the registered voters in the community at large.

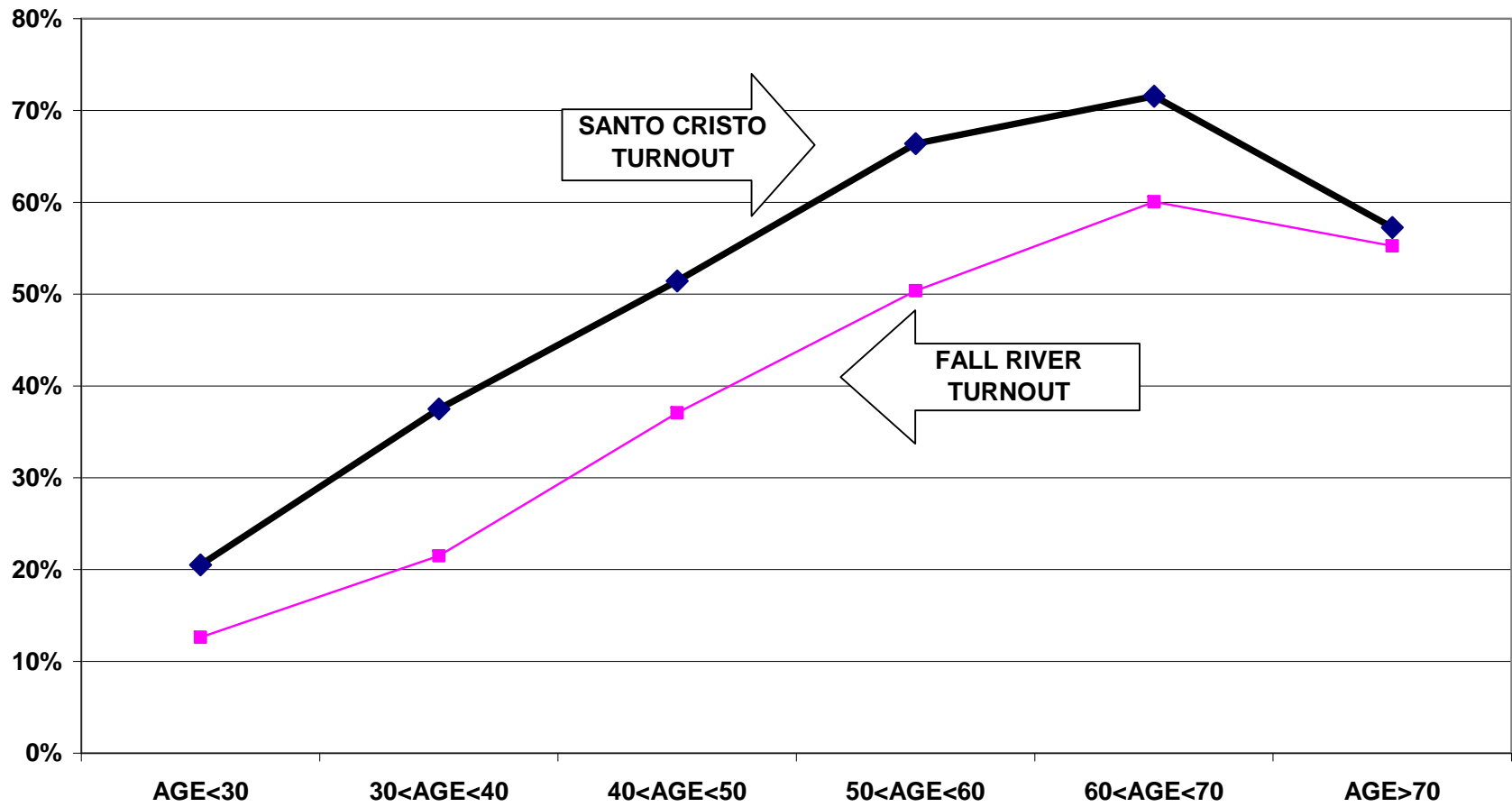
For example, voters under 30 years old associated with the parish had a 22% turnout rate in the September 2007 elections, while voters between 60 and 70 years old had a 70% turnout rate. For the November 2007 elections, the under 30 year old associated parishioners had a 21% turnout rate compared to a 72% turnout rate for voters between 60 and 70 years old. For the February 2008 elections, voters under 30 years old associated with the parish had a 27% turnout rate while voters between 60 and 70 years old had a 75% turnout rate.

The following graphs for the September and November 2007 elections, as well as the February 2008 election, illustrate the relationship between turnout rates and age. These graphs are for all voters associated with the parish, not just the heads of household.

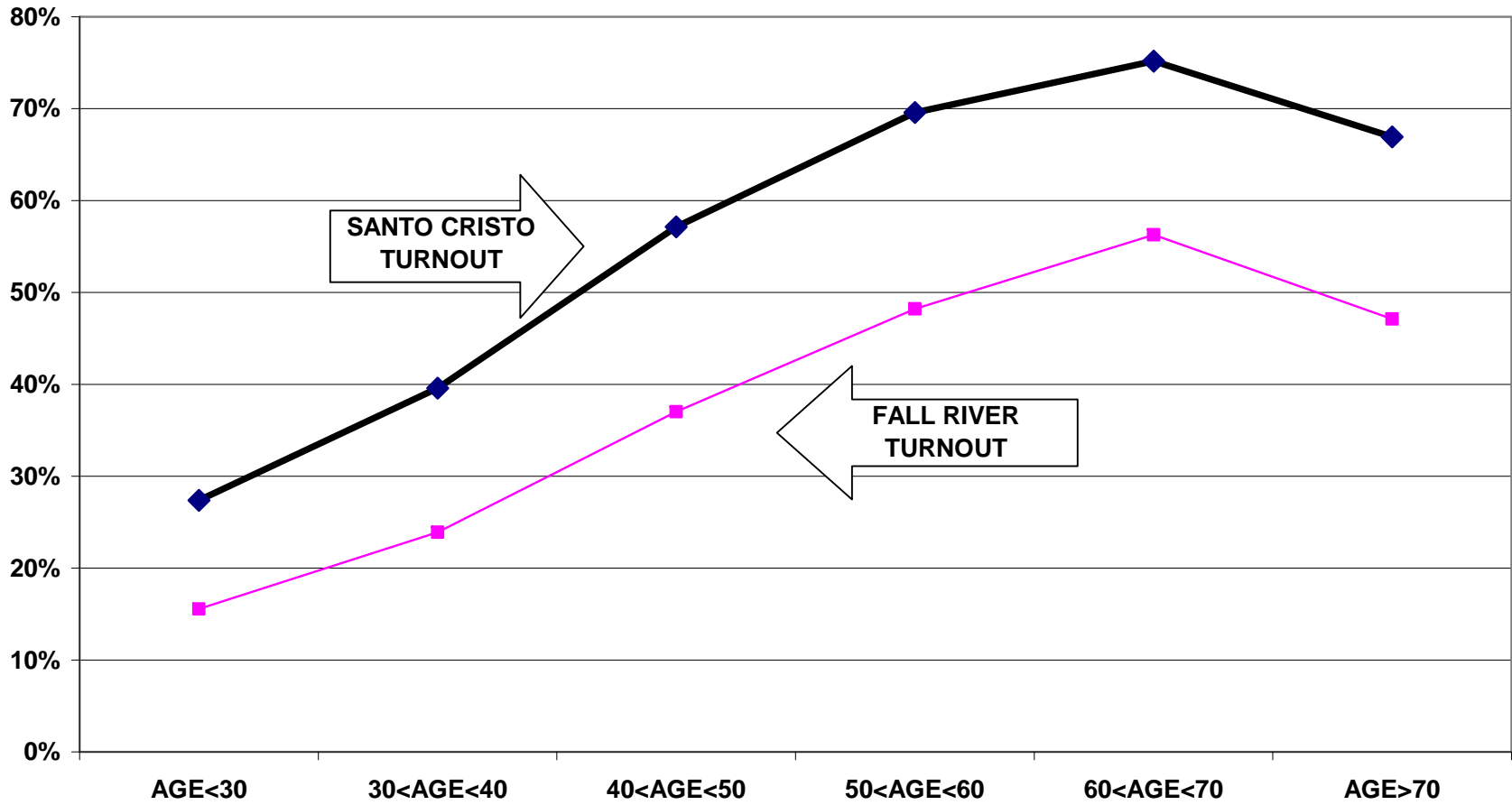
**TURNOUT BY AGE SEPTEMBER 2007
SANTO CRISTO
ALL HOUSEHOLD MEMBERS**



TURNOUT BY AGE NOVEMBER 2007 SANTO CRISTO ALL HOUSEHOLD MEMBERS



TURNOUT BY AGE FEBRUARY 2008 SANTO CRISTO ALL HOUSEHOLD MEMBERS



RECOMMENDATIONS

- In order to encourage increased voter registrations and establish a collective commitment to strong voter turnout, Santo Cristo Parish should consider sending letters to every parish family reminding them of the parish's involvement in the Citizenship Project and encouraging voter registration for family members who are citizens but have not yet registered to vote.
- The parish should examine measures to increase voter turnout in the under 30 year old and 30 to 40 year old categories. While low voter turnout rates for those under 40 years old is not a problem unique to Santo Cristo, it is important to discuss ways the parish can address this issue so as to increase their efforts towards faithful citizenship.

APPENDIX

- Historical Data 10
- Registered Voter Turnout Bar Graph 11
- Difference in Voter Turnout Bar Graph 12
- Voter Registration by Age and Gender Bar Graph 13
- Registered Voters vs. Actual Voters September 2007 Bar Graph 14
- Registered Voters vs. Actual Voters November 2007 Bar Graph 15
- Registered Voters vs. Actual Voters February 2008 Bar Graph 16
- Comparison of Santo Cristo vs. Fall River Under 30 Bar Graph 17
- Under 30 Turnout Difference Bar Graph 18

**HISTORICAL DATA: SANTO CRISTO PARISH
REGISTRATION - VOTING**

MEMBERS RESIDING IN FALL RIVER 3,893

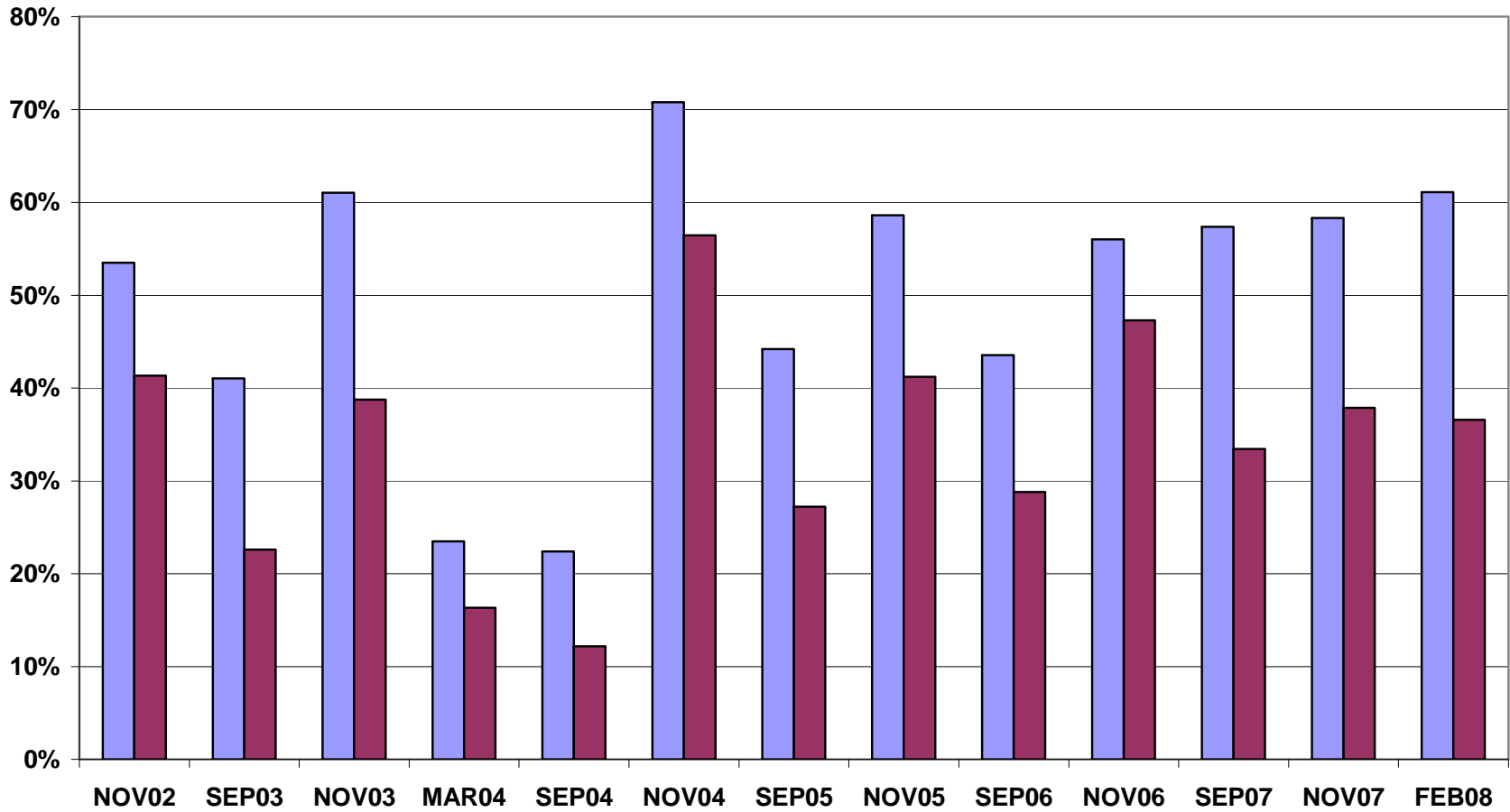
**MEMBERS REGISTERED
TO VOTE IN THE CITY OF FALL RIVER 1,267 HEADS OF HOUSEHOLD**

2,085 ALL HOUSEHOLD MEMBERS

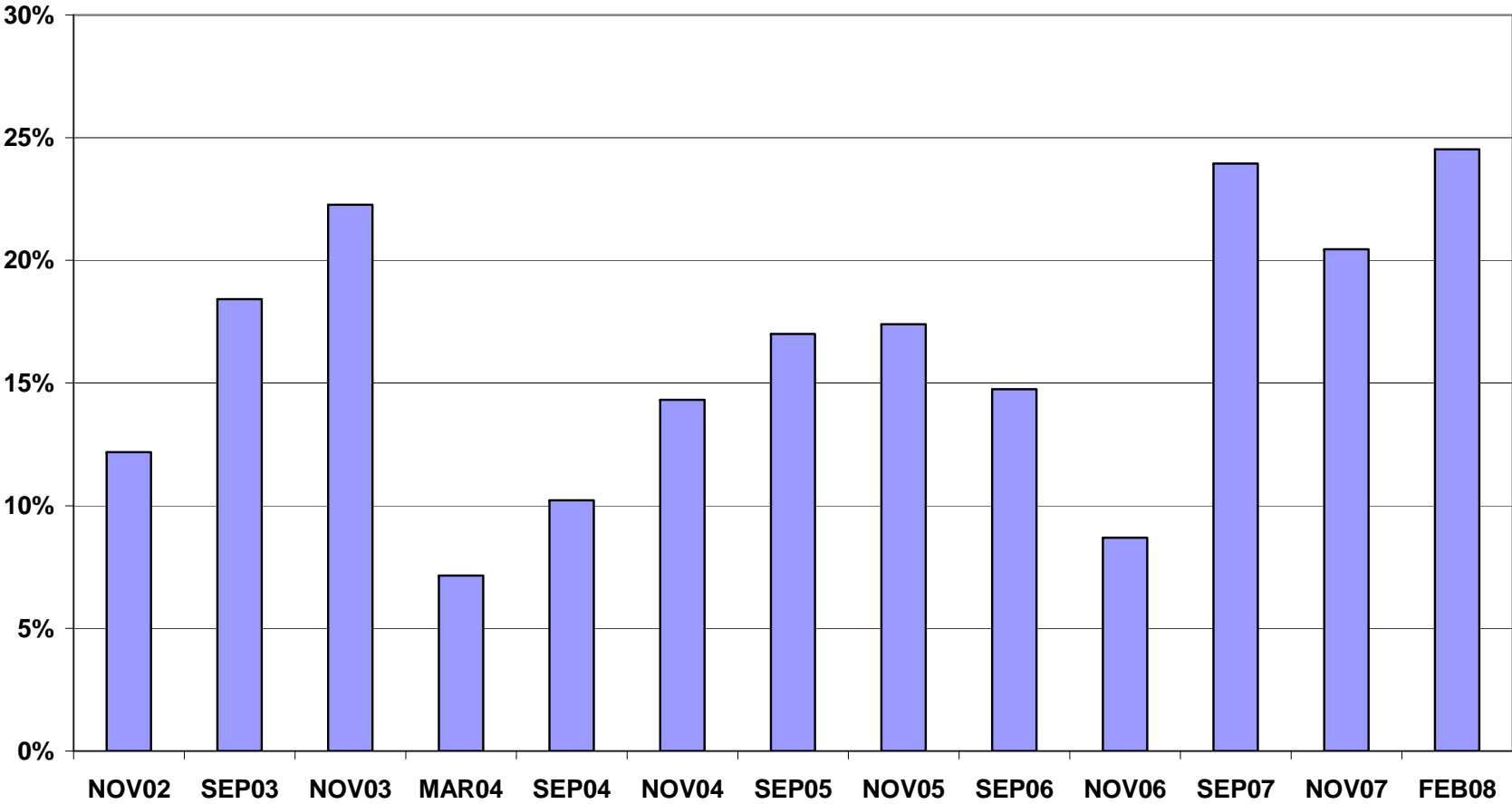
VOTING PERFORMANCE OF FALL RIVER RESIDENTS

	HEADS OF HOUSEHOLD	AS PERCENT OF ALL REGISTERED MEMBERS ELIGIBLE TO VOTE	CITYWIDE VOTING HISTORY AS PERCENT OF ALL REGISTERED VOTERS)
		COMPARABLE STATISTICS	
VOTERS NOV 2002	939	53.5%	41.7%
VOTERS SEP 2003	720	41.0%	22.7%
VOTERS NOV 2003	1071	61.0%	38.8%
VOTERS MAR 2004	412	23.5%	16.3%
VOTERS SEP 2004	393	22.4%	12.2%
VOTERS NOV 2004	1242	70.8%	56.4%
VOTERS SEP 2005	722	44.2%	27.2%
VOTERS NOV 2005	958	58.6%	41.2%
VOTERS SEP 2006	722	43.6%	28.8%
VOTERS NOV 2006	958	56.0%	47.3%
VOTERS SEP 2007	727	57.4%	33.4%
VOTERS NOV 2007	739	58.3%	37.9%
VOTERS FEB 2008	774	61.1%	36.6%

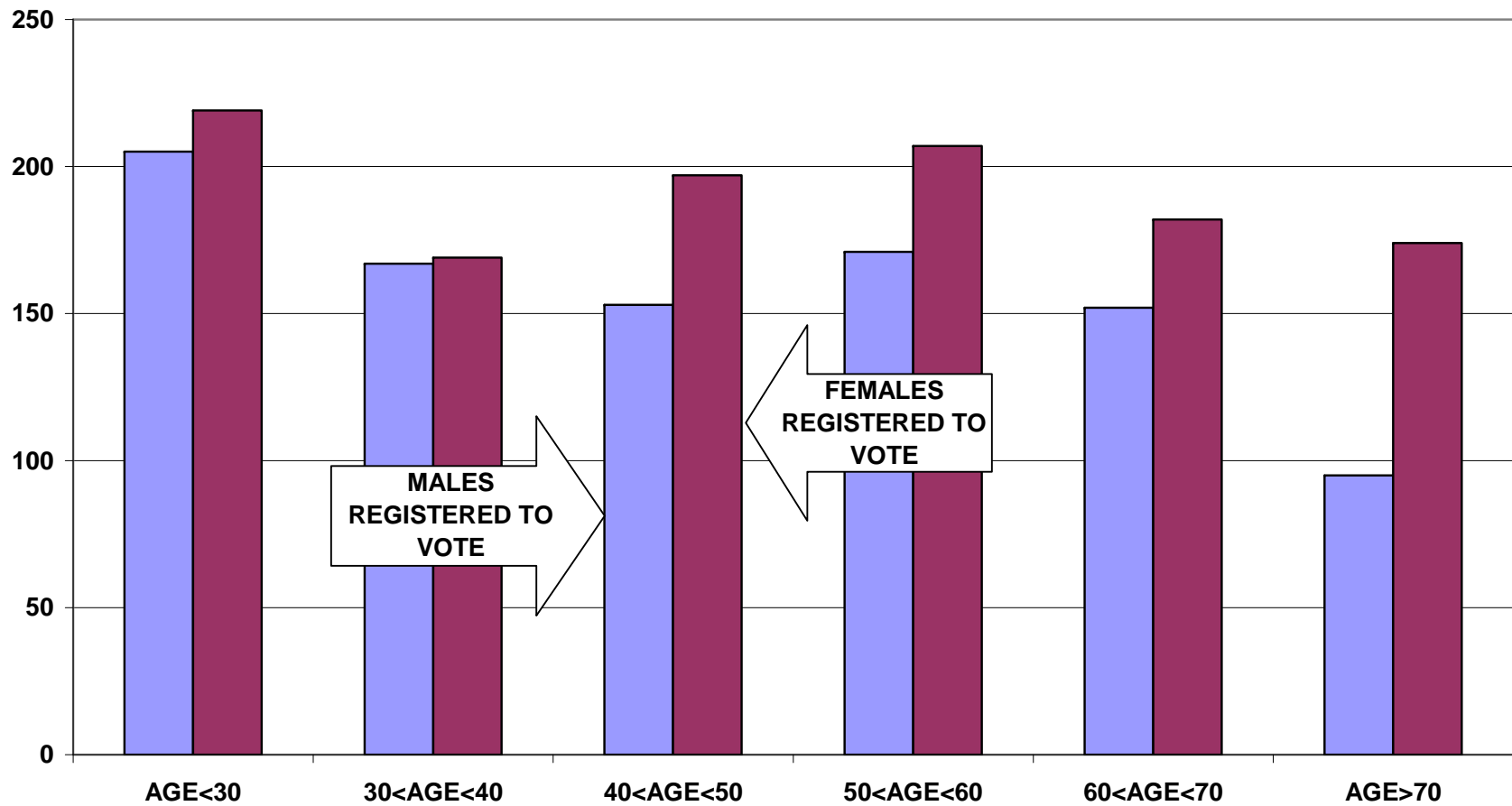
REGISTERED VOTER TURNOUT COMPARISON BETWEEN FALL RIVER AND SANTO CRISTO HEADS OF HOUSEHOLD



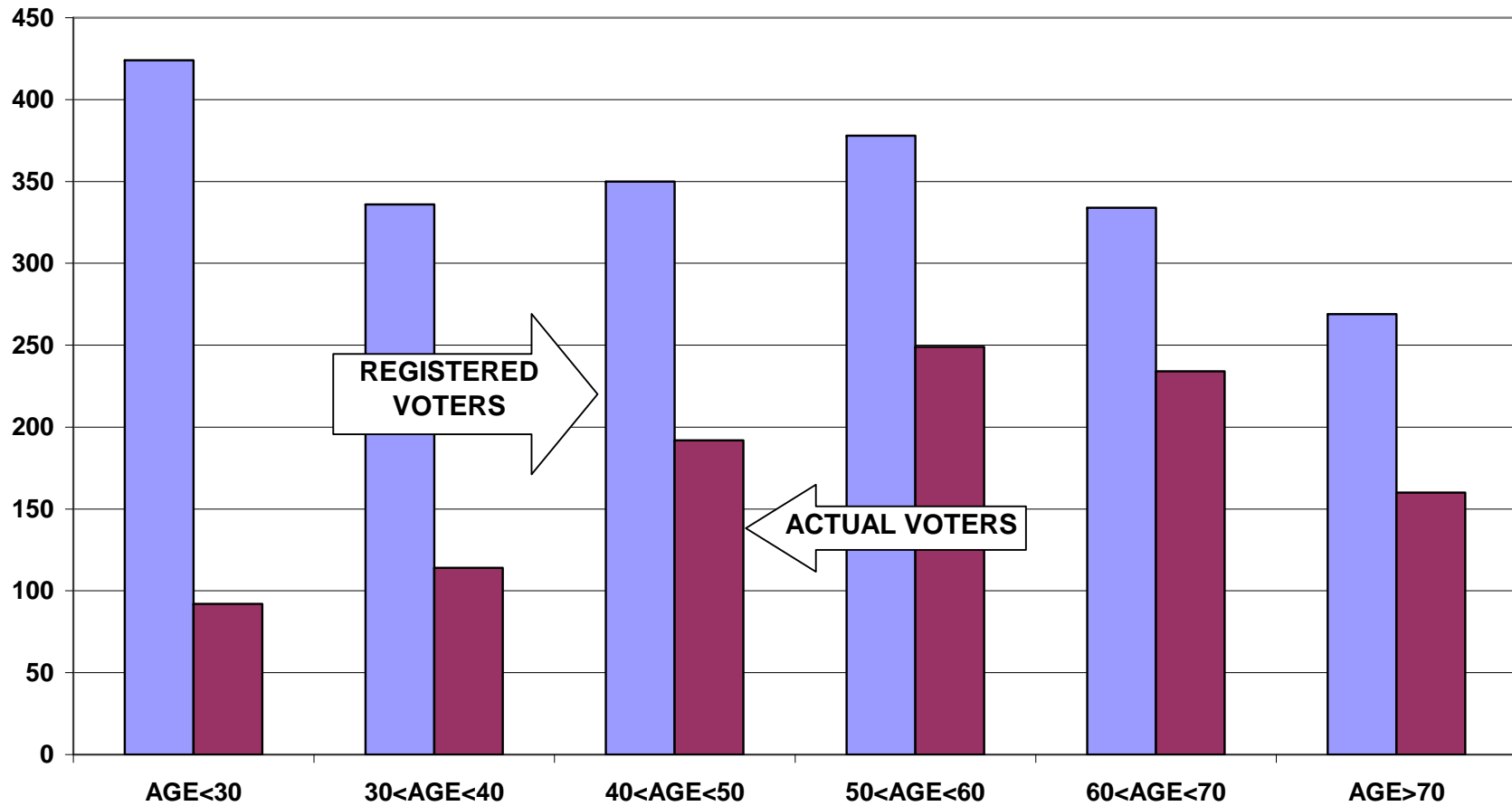
**DIFFERENCE IN VOTER TURNOUT BETWEEN
FALL RIVER VOTERS AND SANTO CRISTO VOTERS
HEADS OF HOUSEHOLD**



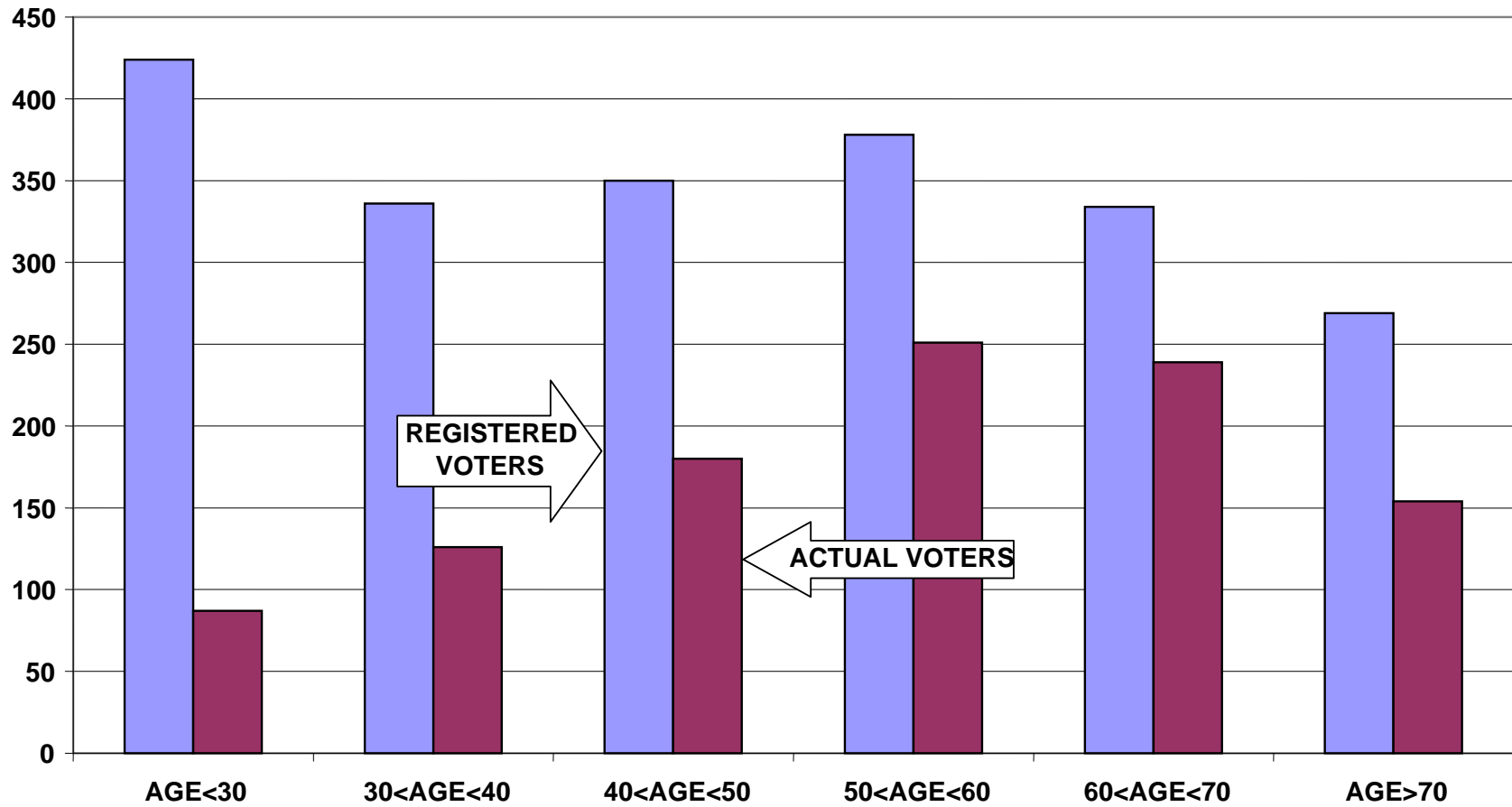
**VOTER REGISTRATION BY AGE AND GENDER
SANTO CRISTO
ALL HOUSEHOLD MEMBERS**



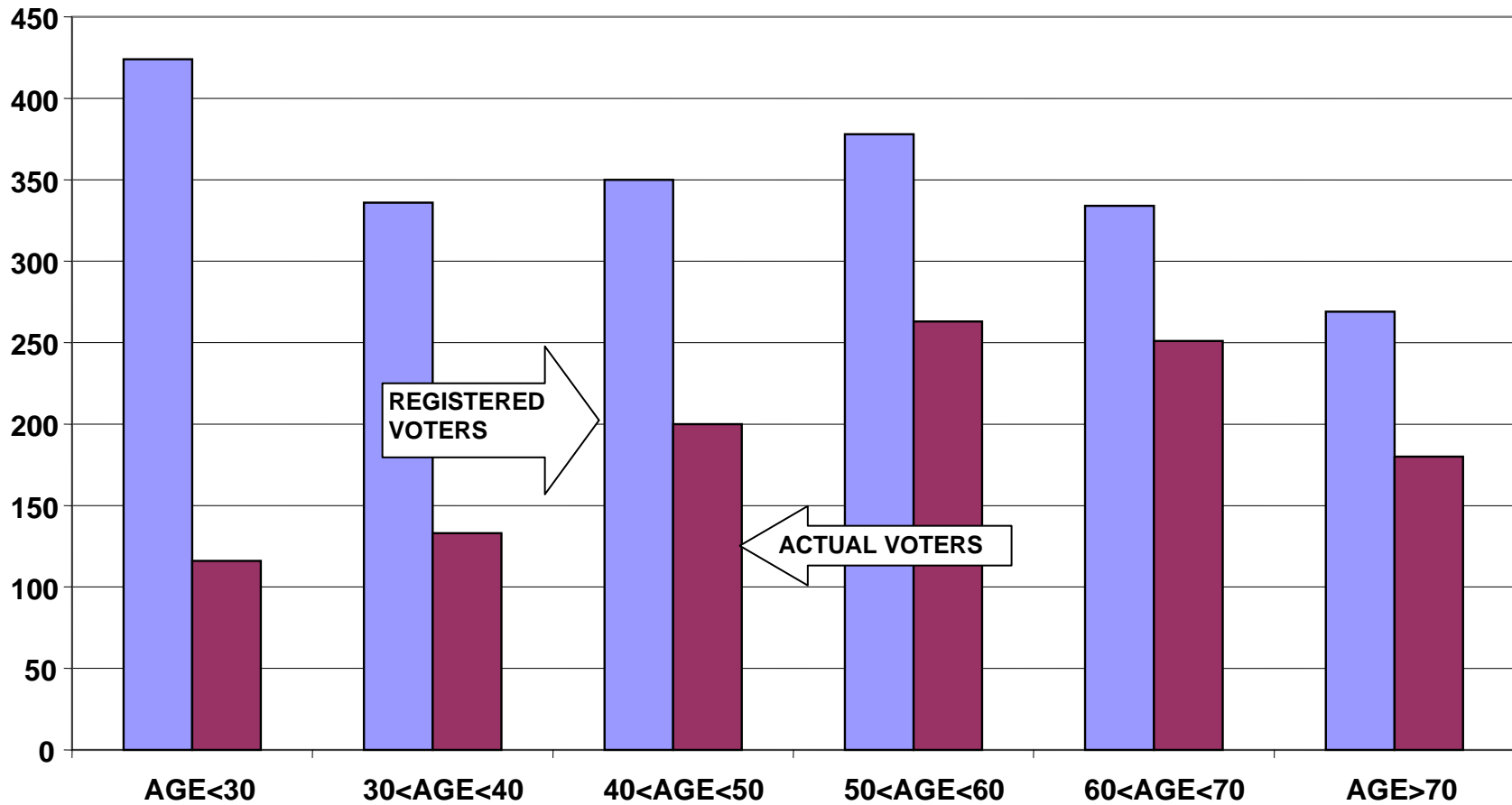
**REGISTERED VOTERS VERSUS ACTUAL VOTERS SEPTEMBER 2007
SANTO CRISTO
ALL HOUSEHOLD MEMBERS**



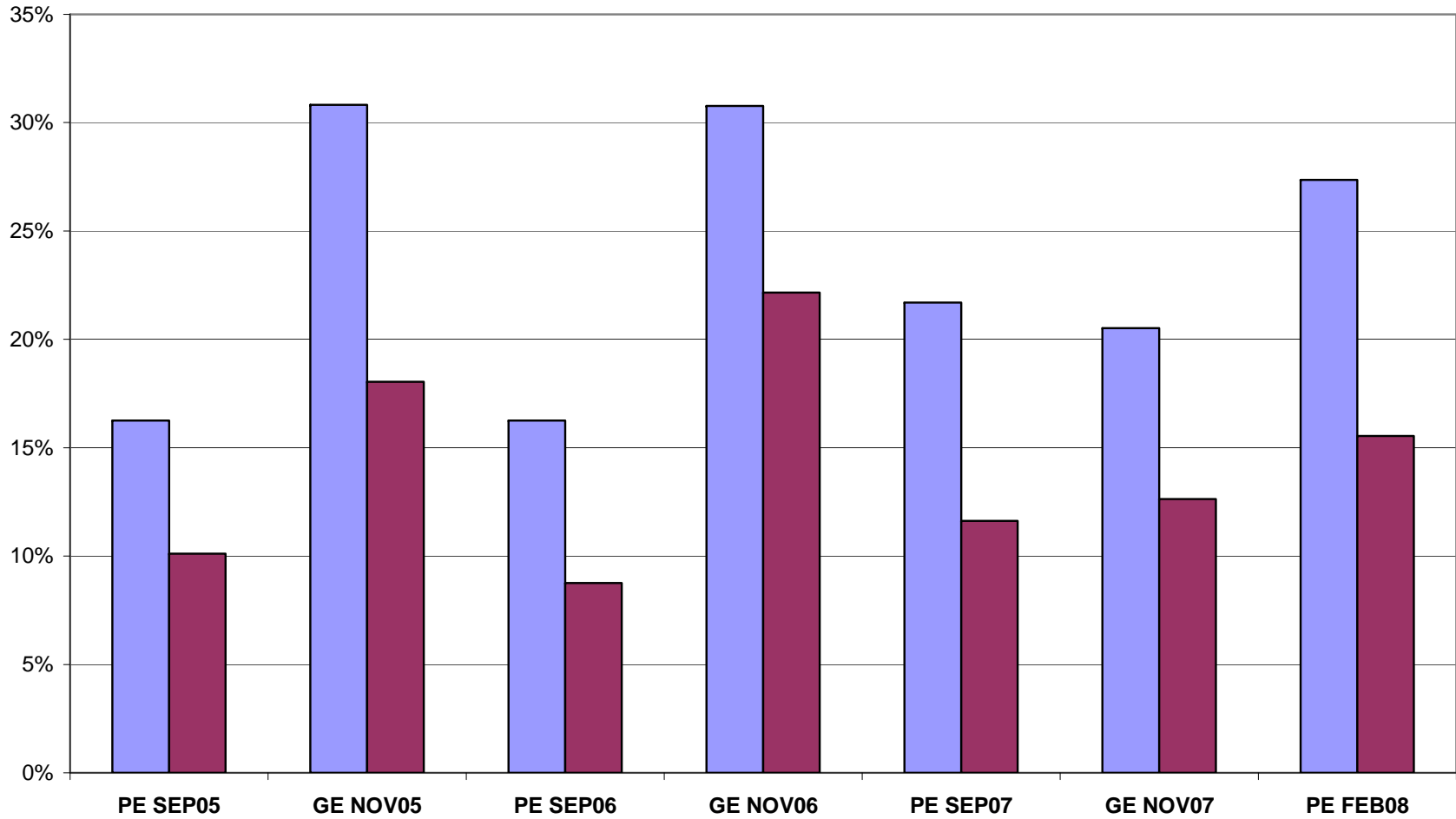
**REGISTERED VOTERS VERSUS ACTUAL VOTERS NOVEMBER 2007
SANTO CRISTO
ALL HOUSEHOLD MEMBERS**



**REGISTERED VOTERS VERSUS ACTUAL VOTERS FEBRUARY 2008
SANTO CRISTO
ALL HOUSEHOLD MEMBERS**



COMPARISON OF SANTO CRISTO VERSUS FALL RIVER UNDER 30 VOTER TURNOUT



UNDER 30 VOTER TURNOUT DIFFERENCE BETWEEN SANTO CRISTO PARISH AND CITY OF FALL RIVER

