

THE PORTUGUESE AMERICAN CITIZENSHIP PROJECT
A NON-PARTISAN INITIATIVE TO PROMOTE CITIZENSHIP AND CIVIC INVOLVEMENT



ST. MICHAEL'S PARISH
FALL RIVER, MA

EVALUATION
OF
THE 2007-2008 ELECTIONS

March 23, 2008

SUPPORTED BY THE
LUSO-AMERICAN
FOUNDATION

REPORT CONTENTS

- **STATISTICS AND SUMMARY OF WORK** 3
- **RESULTS** 4
- **RECOMMENDATIONS** 8
- **APPENDIX** 9

KEY STATISTICS

- **Number of Parishioners: 1,508**
- **Heads of Household registered to vote: 684 (45% of all parishioners)**
- **All Household Members registered to vote: 868**
- **Voter Turnout* in September 2007 – 56% (citywide turnout 33%)**
- **Voter Turnout in November 2007 – 63% (citywide turnout 38%)**
- **Voter Turnout in February 2008 – 52% (citywide turnout 37%)**

SUMMARY OF WORK

St. Michael's Parish has been an active participant in the Portuguese American Citizenship Project since 2002.

For the September 2007 Primary Elections and the November 2007 General Elections, postcards in Portuguese and English were sent to every registered parish voter reminding them of the date, polling hours, and location of the assigned polling station for each election. Cards were not sent out for February 2008 Presidential Primary Elections.

* Voter turnout is the number of citizens voting in an election divided by the total number of citizens registered to vote. Voter turnout statistics are for Fall River residents only.

RESULTS

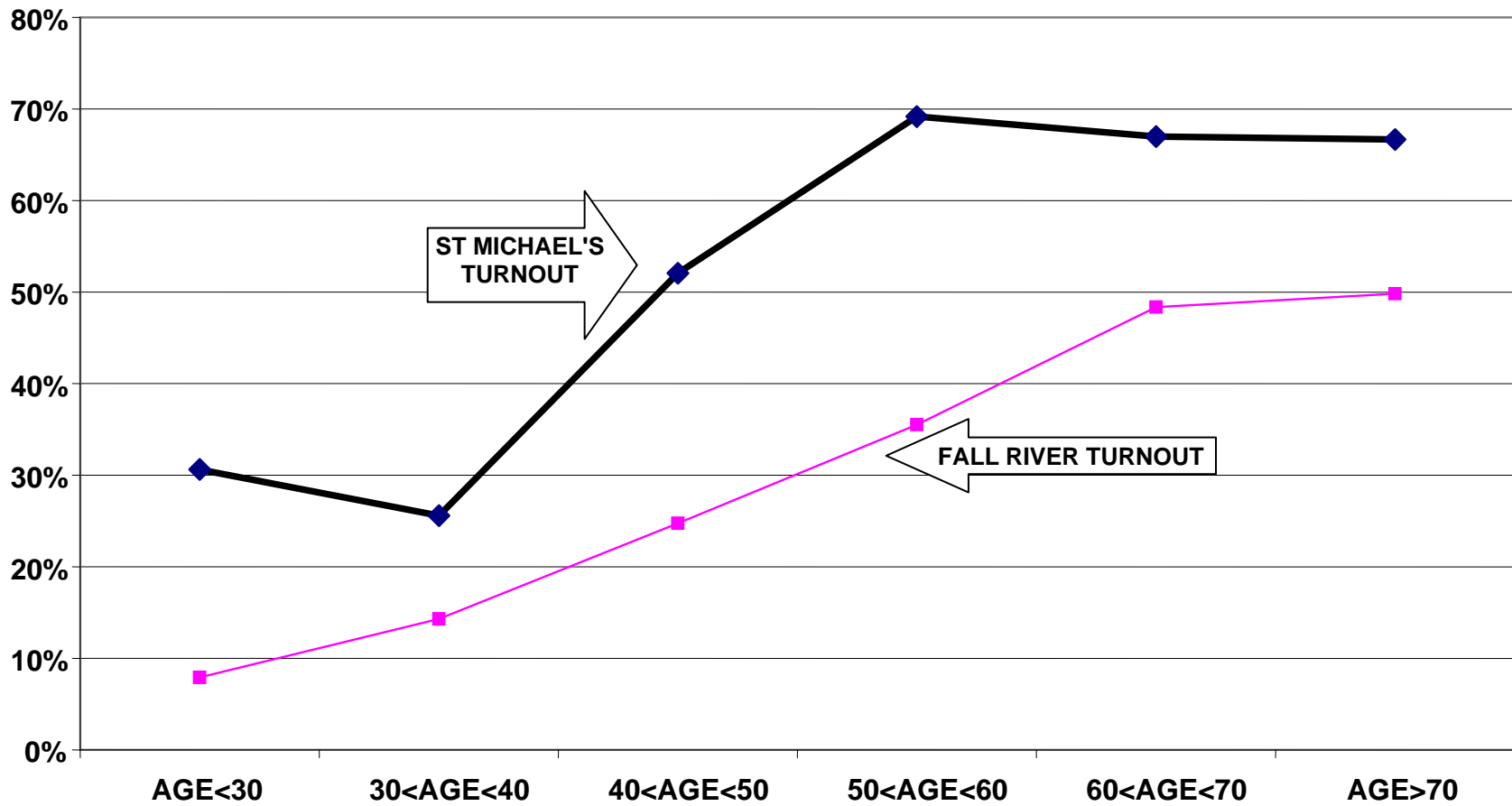
St. Michael's voter turnout for the Fall 2007 and February 2008 elections was consistently higher than citywide turnout. Heads of household turnout for the September 2007 primary elections was 34%, as compared to the city turnout of 29%. The St. Michael heads of household turnout for the November 2007 city elections was 52%, as compared to the city turnout of 47%. Heads of household turnout for the February 2008 Presidential Primary Elections was 46%, as compared to the city turnout of 37%.

Voter turnout is not uniform across age groups. Voters under 30 years of age and even those between 30 and 40 years old had lower turnout rates than the older voters. This is true for the registered voters in the parish and true for the registered voters in the community at large.

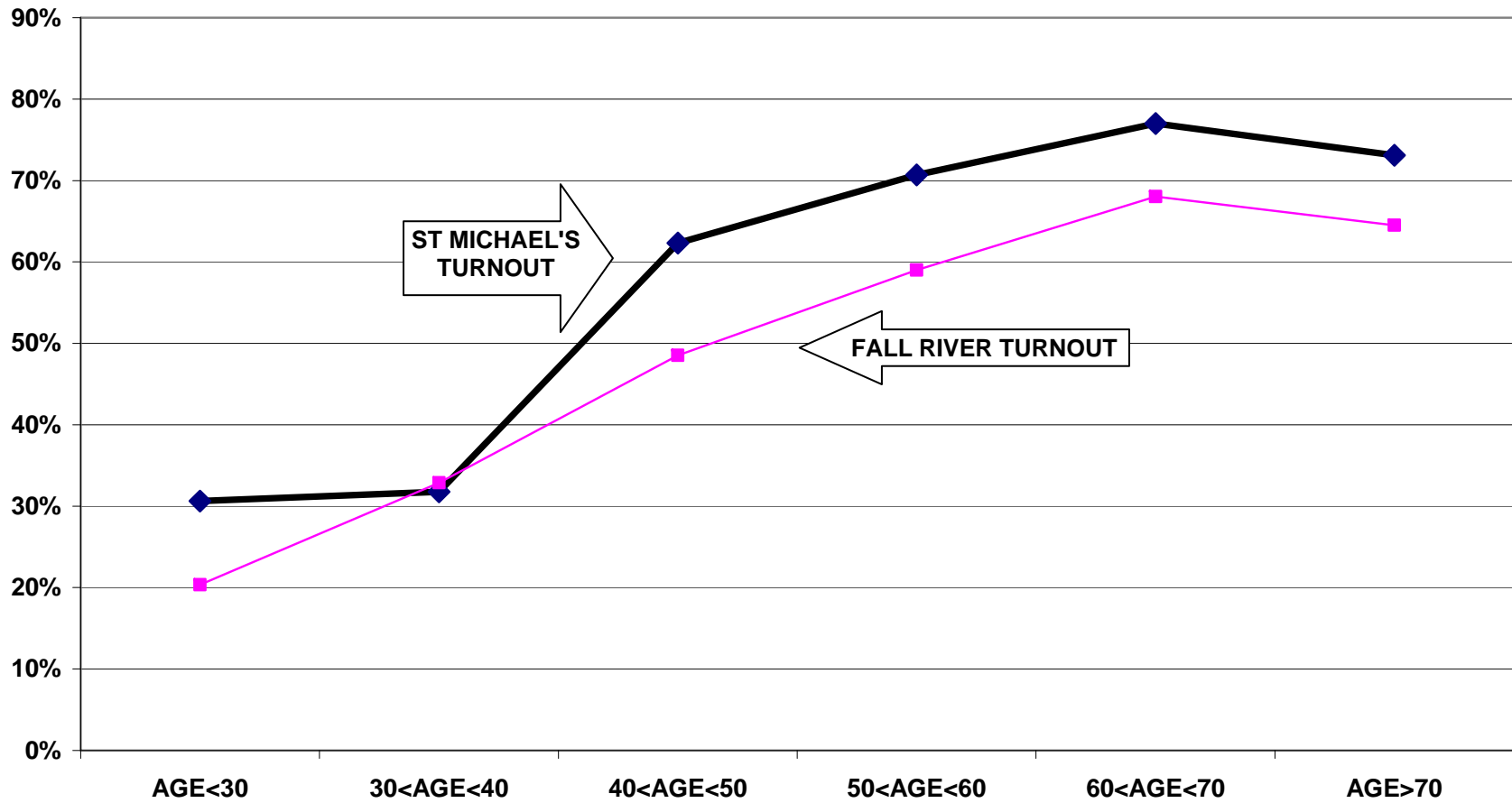
For example, voters associated with the parish under 30 years old had a 32% turnout rate in the September 2007 elections, while voters between 60 and 70 years old had a 65% turnout rate. For the November 2007 elections, the under 30 year old associated parishioners had a 33% turnout rate compared to a 76% turnout rate for voters between 60 and 70 years old. For the February 2008 elections, voters under 30 years old associated with the parish had a 27% turnout rate while voters between 60 and 70 years old had a 75% turnout rate.

The following graphs for the September 2007, November 2007, and February 2008 elections illustrate the relationship between turnout rates and age. These graphs refer to all family members associated with the parish, not just heads of household.

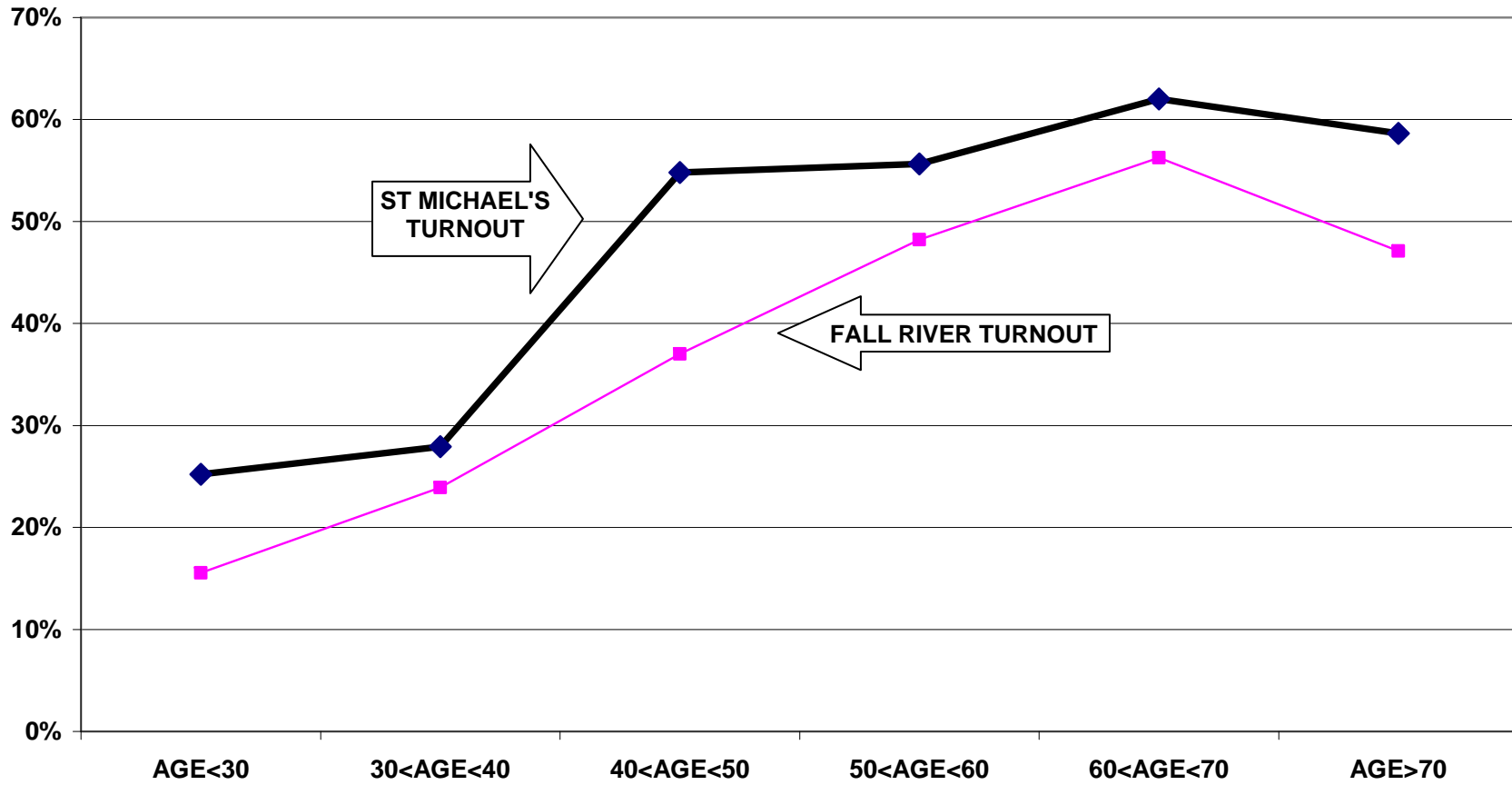
**TURNOUT BY AGE SEPTEMBER 2007
ST. MICHAEL'S
ALL HOUSEHOLD MEMBERS**



**TURNOUT BY AGE NOVEMBER 2007
ST. MICHAEL'S
ALL HOUSEHOLD MEMBERS**



TURNOUT BY AGE FEBRUARY 2008 ST. MICHAEL'S ALL HOUSEHOLD MEMBERS

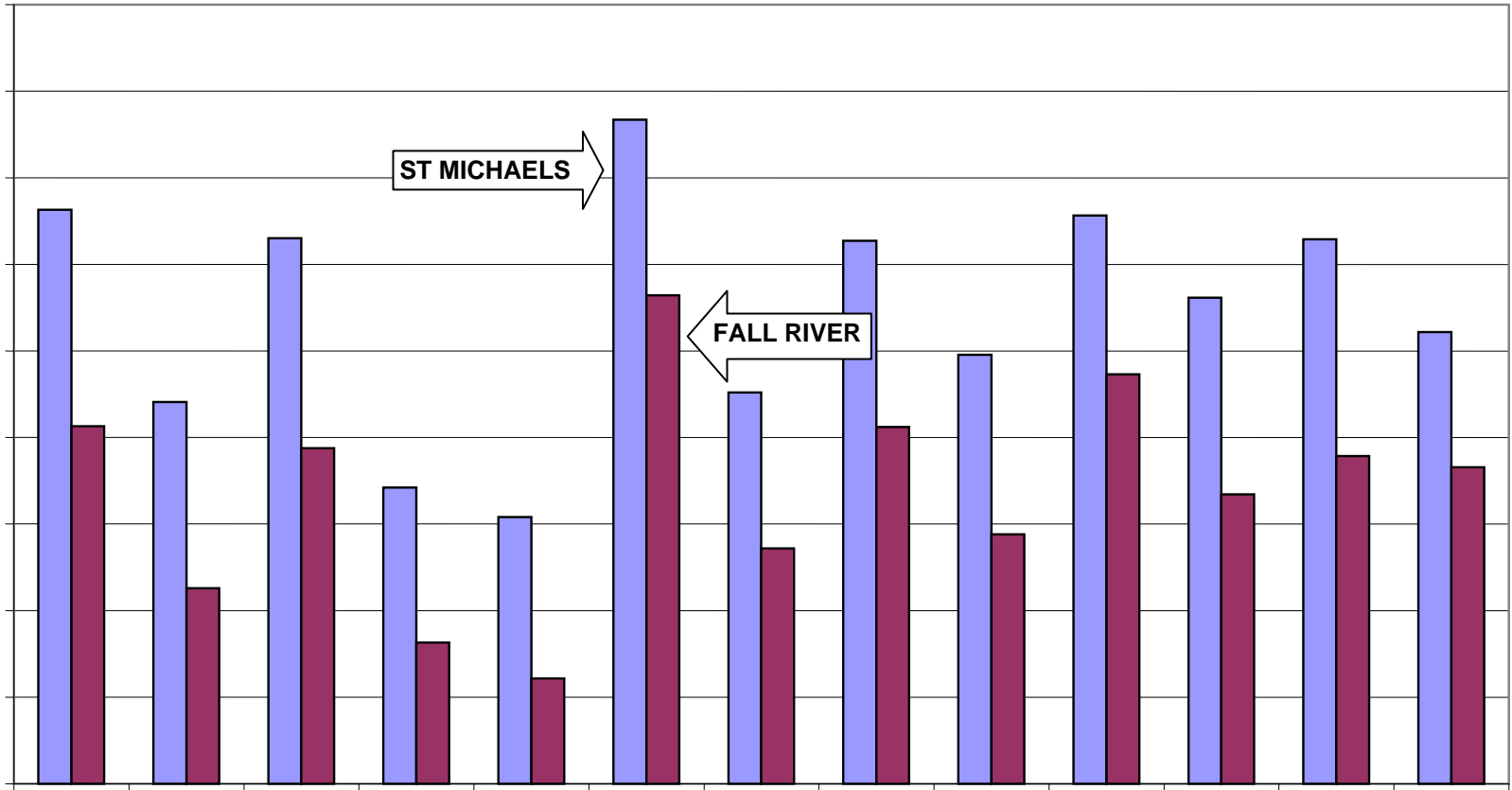


RECOMMENDATIONS

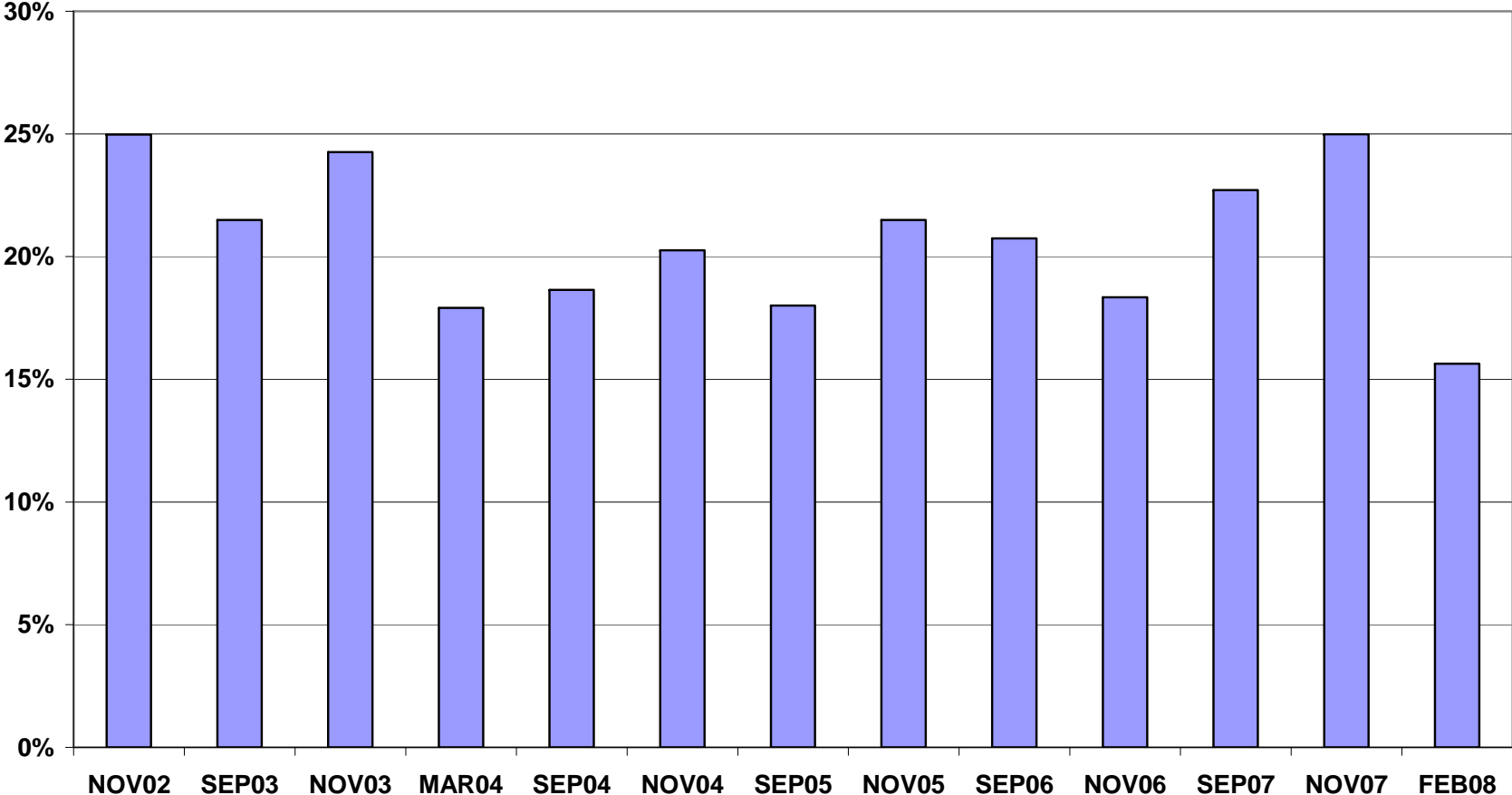
- The parish should try to replicate the high turnout rates of those over 60 years old among younger age groups. Voters over 60 years old had a turnout rate of over 60% in all elections, while those under 40 years old had a turnout rate at least 20% lower in each election. The parish should discover what strategies lead to such high turnout in older voters and consider applying them to the parish community in general.
- In addition, the parish should examine measures to increase general civic participation in the under 30 years old and 30 to 40 year old categories. Activities such as meet-and-greets with elected officials and highlighting policies that affect these younger voters could be helpful.

APPENDIX

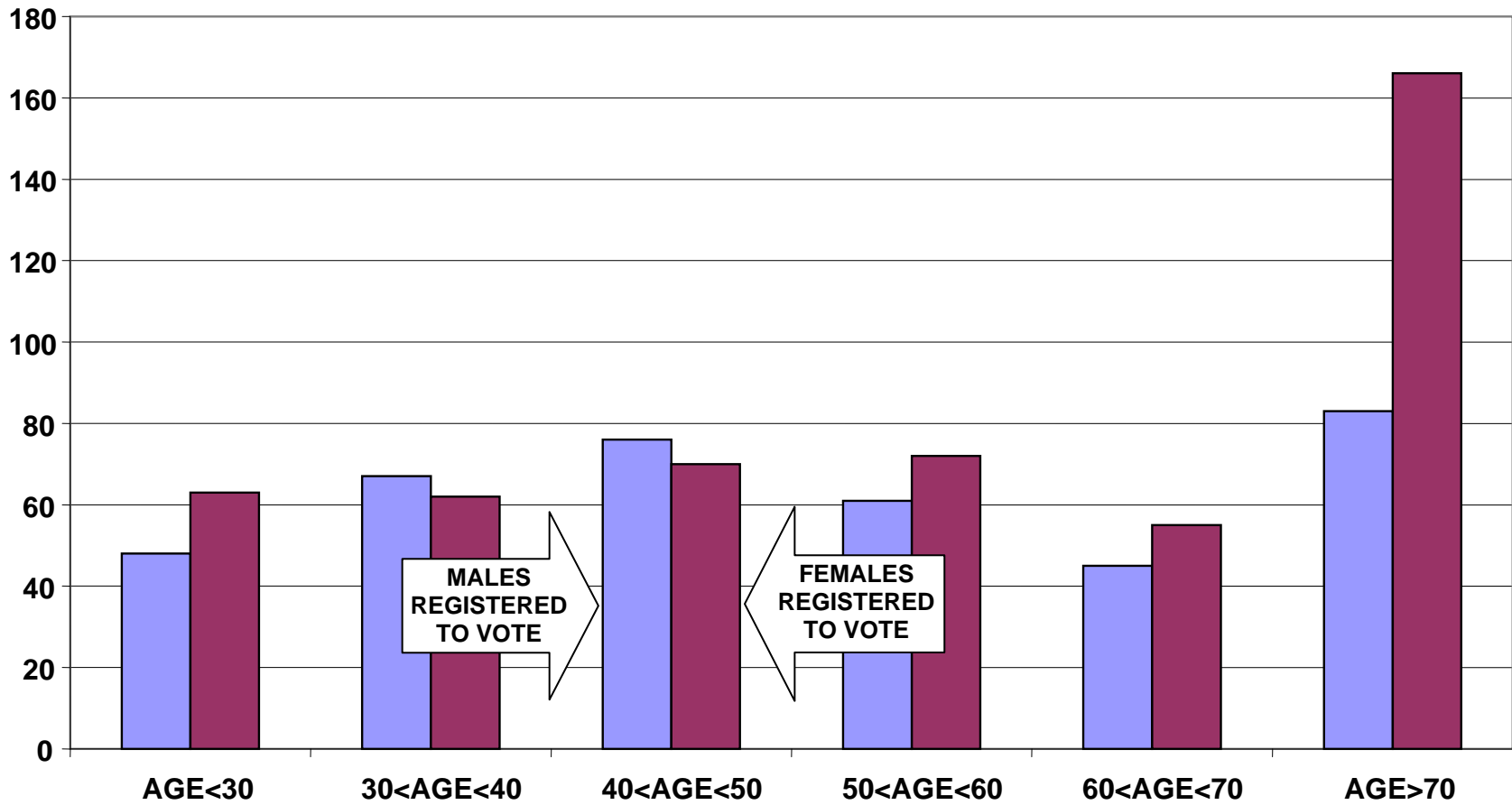
- Historical Data 10
- Registered Voter Turnout Bar Graph 11
- Difference in Voter Turnout Bar Graph 12
- Voter Registration by Age and Gender Bar Graph 13
- Registered Voters vs. Actual Voters September 2007 Bar Graph 14
- Registered Voters vs. Actual Voters November 2007 Bar Graph 15
- Registered Voters vs. Actual Voters February 2008 Bar Graph 16
- Comparison of St. Michael's vs. Fall River Under 30 Bar Graph 17
- Under 30 Turnout Difference Bar Graph 18



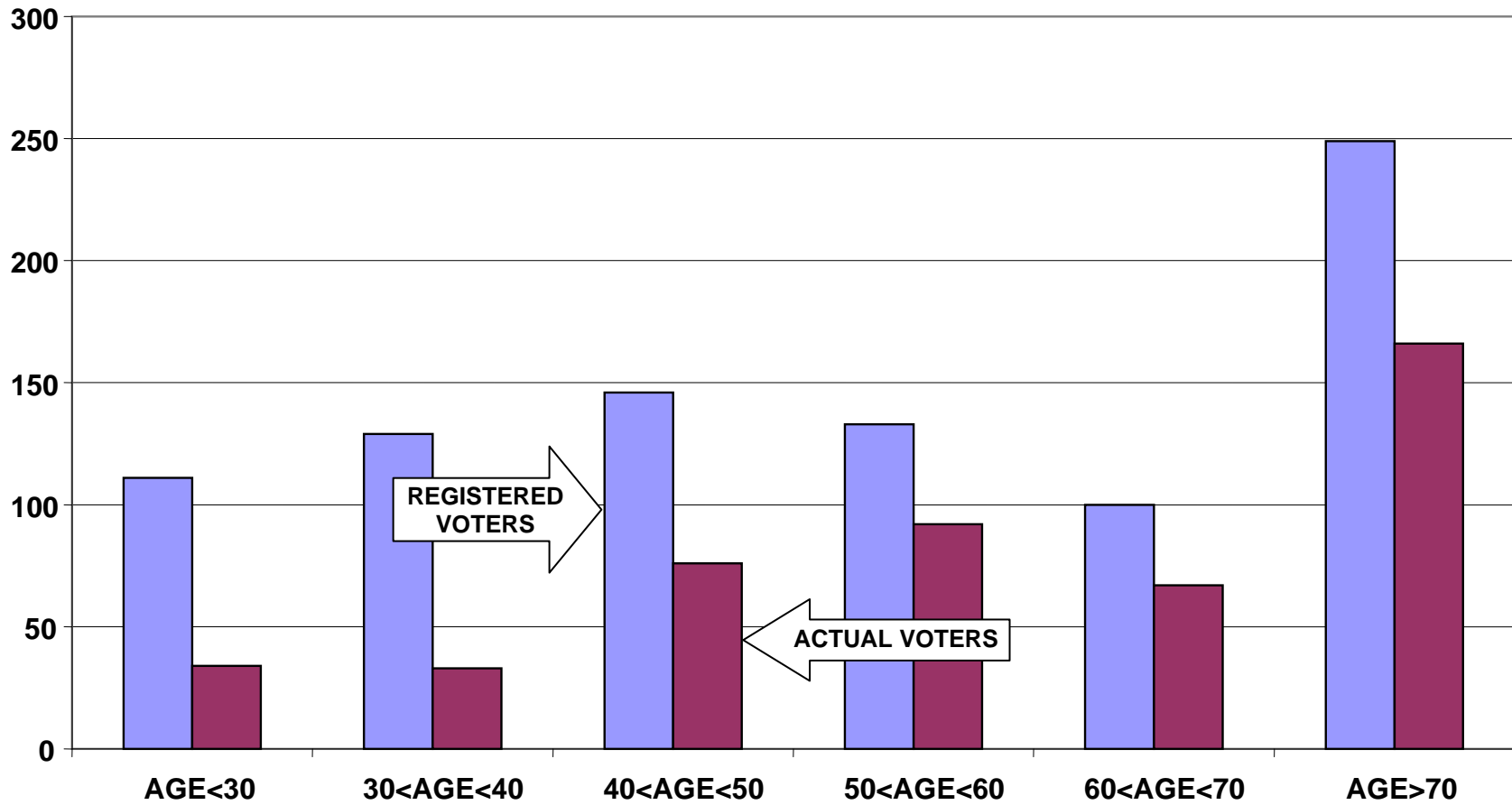
**DIFFERENCE IN VOTER TURNOUT BETWEEN
FALL RIVER VOTERS AND ST MICHAEL'S VOTERS
HEADS OF HOUSEHOLD**



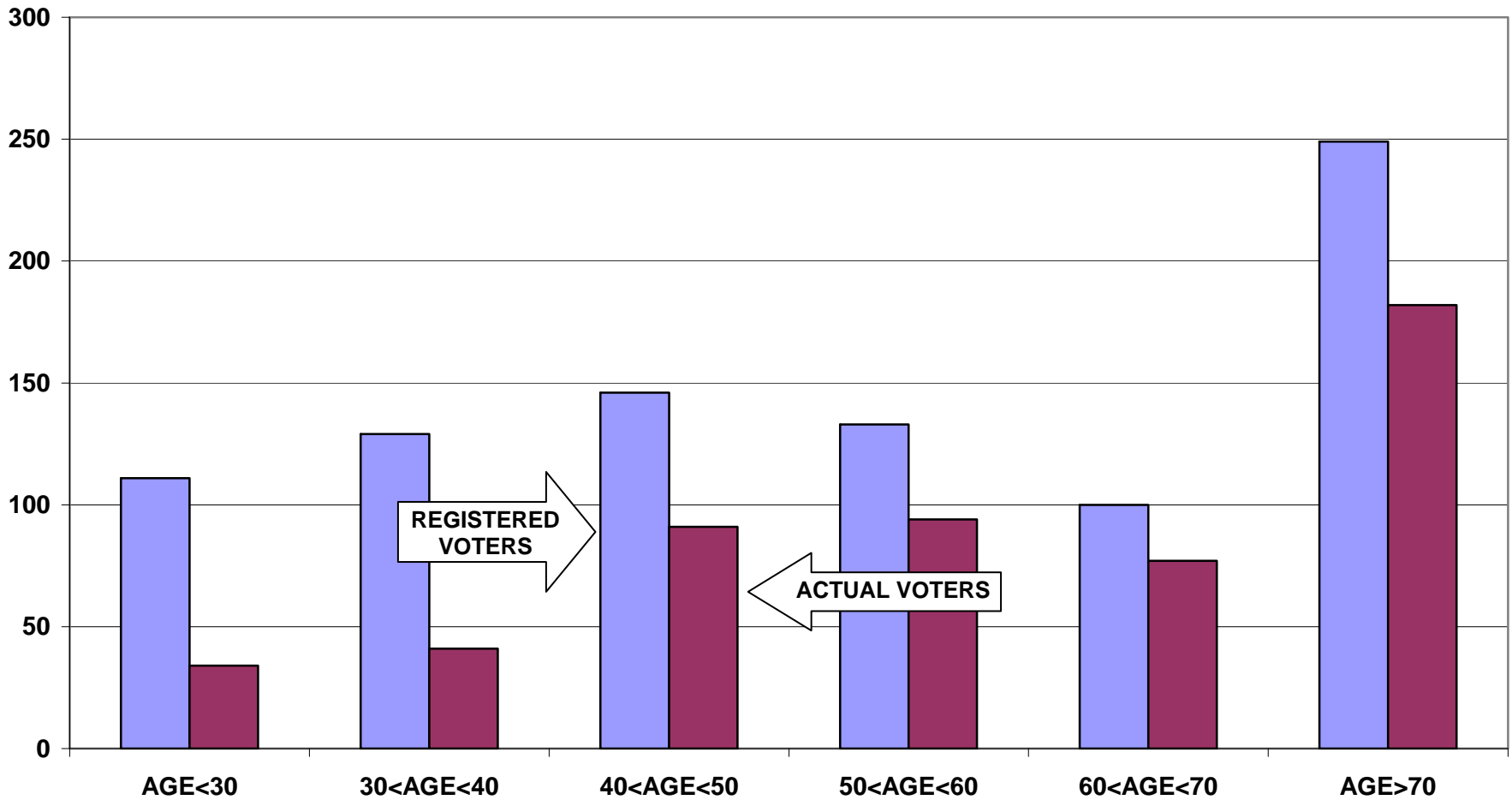
VOTER REGISTRATION BY AGE AND GENDER ST. MICHAEL'S ALL HOUSEHOLD MEMBERS

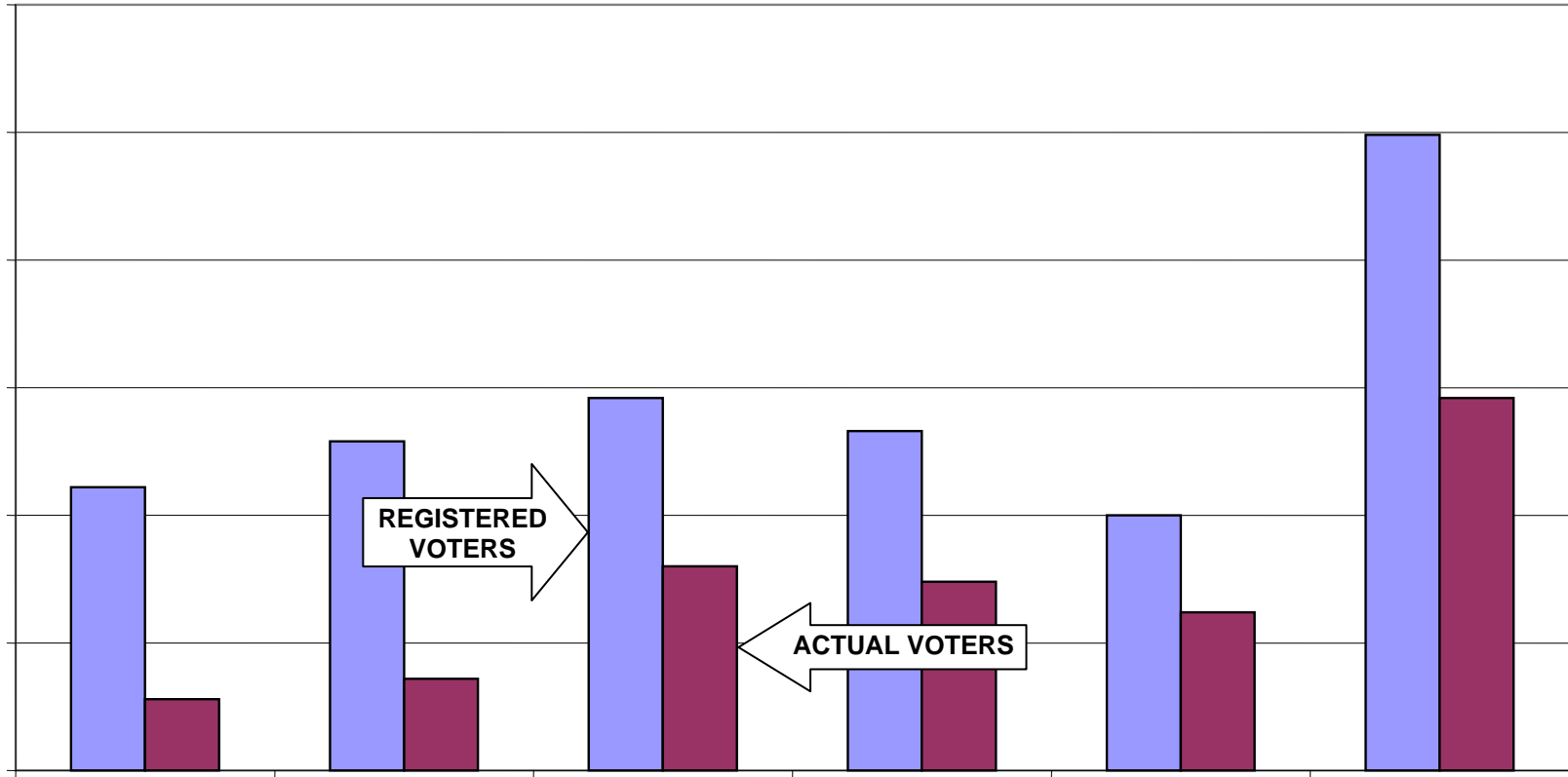


**REGISTERED VOTERS VERSUS ACTUAL VOTERS SEPTEMBER 2007
ST. MICHAEL'S
ALL HOUSEHOLD MEMBERS**

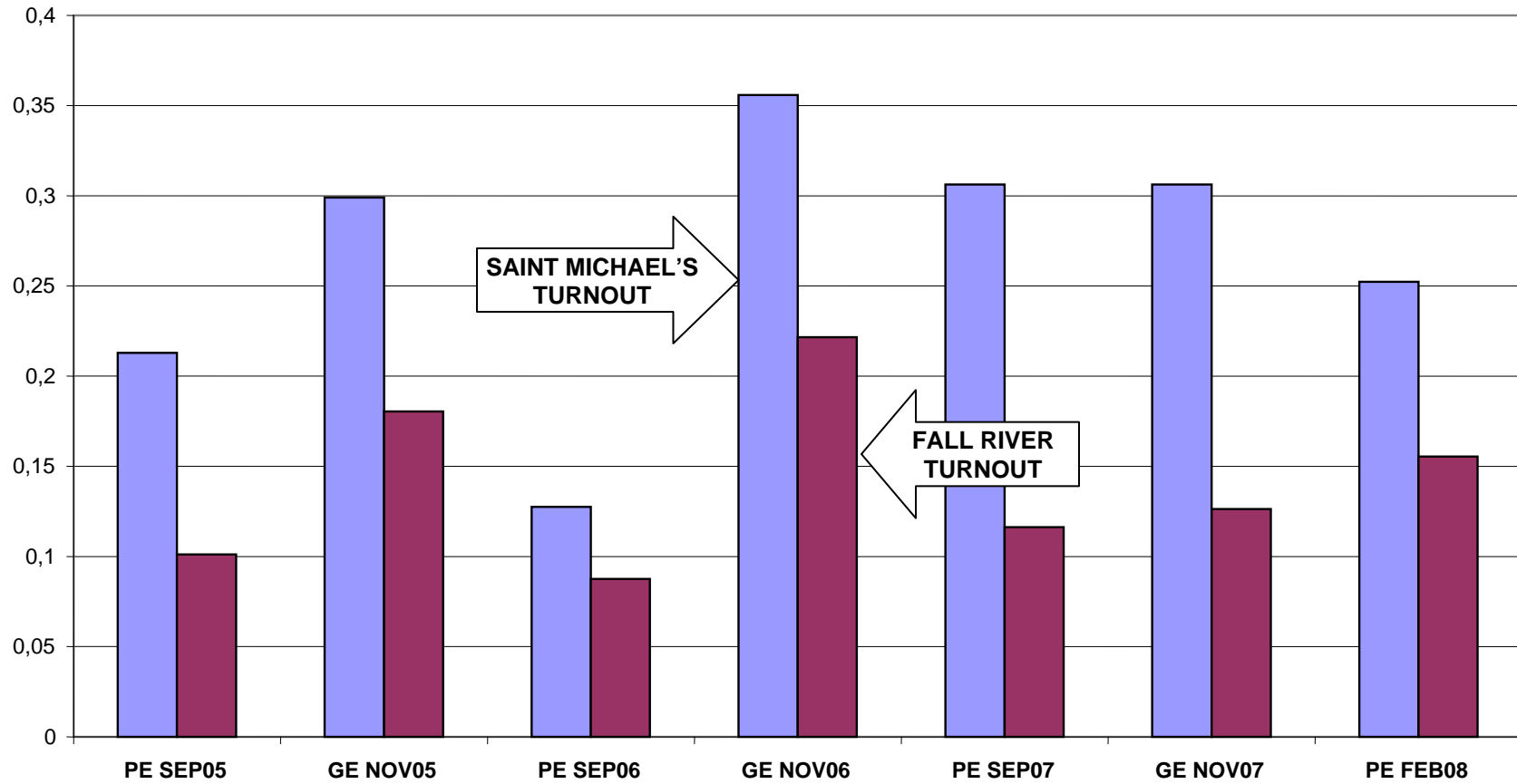


REGISTERED VOTERS VERSUS ACTUAL VOTERS NOVEMBER 2007 ST. MICHAEL'S ALL HOUSEHOLD MEMBERS





COMPARISON OF SAINT MICHAEL'S VERSUS FALL RIVER UNDER 30 VOTER TURNOUT



UNDER 30 VOTER TURNOUT DIFFERENCE BETWEEN SAINT MICHAEL'S PARISH AND CITY OF FALL RIVER

