

THE PORTUGUESE AMERICAN CITIZENSHIP PROJECT
A NON-PARTISAN INITIATIVE TO PROMOTE CITIZENSHIP AND CIVIC INVOLVEMENT



MOUNT CARMEL PARISH
NEW BEDFORD, MA

EVALUATION
OF
THE 2006 ELECTIONS

July 24, 2007

SUPPORTED BY THE
LUSO-AMERICAN
FOUNDATION

REPORT CONTENTS

- **STATISTICS AND SUMMARY OF WORK** 3
- **RESULTS** 4
- **RECOMMENDATIONS** 7
- **APPENDIX** 8

KEY STATISTICS

- **Number of Parishioners in New Bedford and its suburbs (Acushnet, Fairhaven, and Dartmouth): 4,553**
- **Heads of Household registered to voter in New Bedford and its suburbs: 2,185**
- **All Household Members registered to vote in New Bedford and its suburbs: 3,256**
- **Heads of Household registered to vote New Bedford: 1,673 (47% of all parishioners in New Bedford)**
- **All Household Members registered to vote in New Bedford: 2,481**
- **Heads of Household in New Bedford voter turnout* in September 2006 – 49% (citywide turnout 29%)**
- **Heads of Household in New Bedford voter turnout in November 2006 – 65% (citywide turnout 46%)**

SUMMARY OF WORK

Mount Carmel has been an active participant in the Portuguese American Citizenship Project since 2002.

For the September 2006 Primary Elections and the November 2006 General Elections, postcards in Portuguese and English were sent to every registered parish voter reminding them of the date, polling hours, and location of the assigned polling station for each election.

* Voter turnout is the number of citizens voting in an election divided by the total number of citizens registered to vote. Voter turnout statistics and graphs are based on New Bedford residents only.

RESULTS

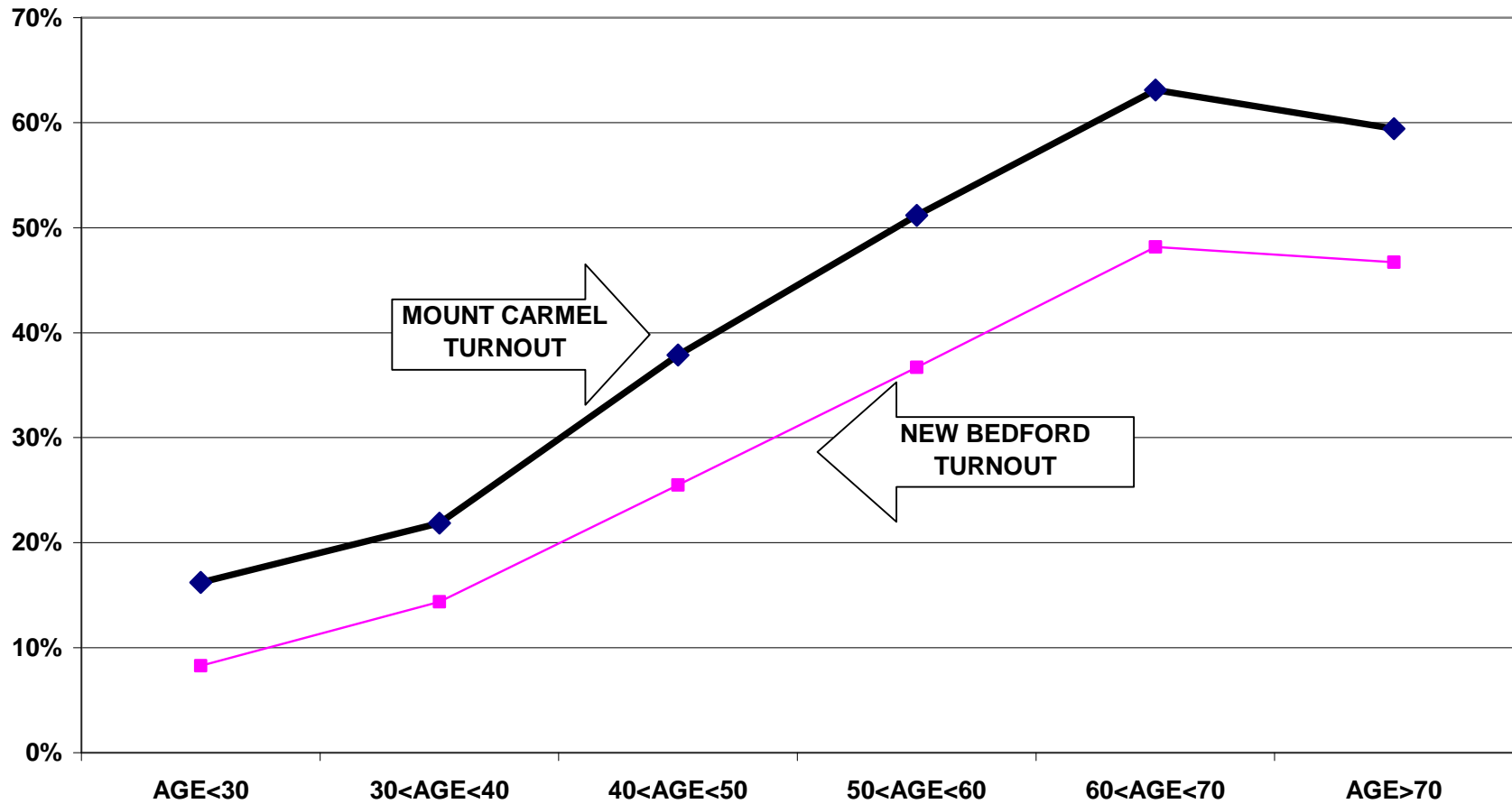
The Mount Carmel voter turnout for the Fall 2006 elections was consistently higher than citywide turnout. Heads of household turnout for the September 2006 Primary Elections was 49%, as compared to the city turnout of 29%. The Mount Carmel heads of household turnout for the November 2006 General Elections was 65%, as compared to the city turnout of 46%.

Voter turnout is not uniform across age groups. Voters under 30 years of age and even those between 30 and 40 years old had lower turnout rates than the older voters. This is true for the registered voters in the parish and true for the registered voters in the community at large.

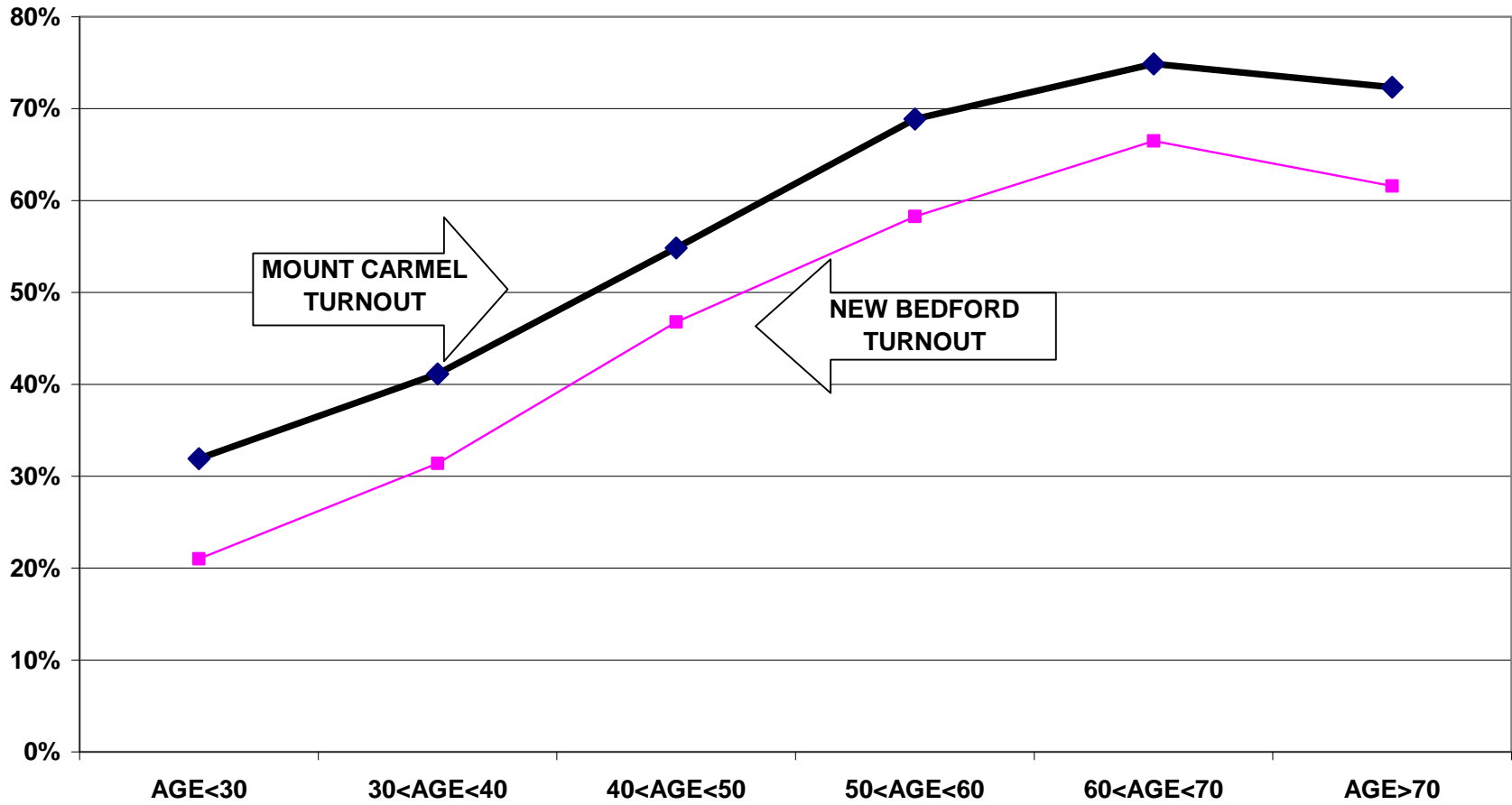
For example, voters under 30 years old had a 16% turnout rate in the September 2006 elections, while voters between 60 and 70 years old had a 63% turnout rate. For the November 2006 elections, the under 30 year old parishioners had a 32% turnout rate compared to a 75% turnout rate for voters between 60 and 70 years old.

The following graphs for the September and November 2006 elections illustrate the relationship between turnout rates and age. These graphs refer to all family members associated with the parish, not just heads of household.

**TURNOUT BY AGE SEPTEMBER 2006
MOUNT CARMEL
ALL HOUSEHOLD MEMBERS**



TURNOUT BY AGE NOVEMBER 2006 MOUNT CARMEL ALL HOUSEHOLD MEMBERS



RECOMMENDATIONS

- The parish should examine measures to increase voter turnout in the under 30 year old and 30 to 40 year old categories. While low voter turnout rates for those under 40 years old is not a problem unique to Mount Carmel, it is important to discuss ways the parish can address this issue so as to increase their efforts towards faithful citizenship.
- In order to encourage increased voter registrations and revive group commitment to strong voter turnout, Mount Carmel should consider reviving its Faithful Citizenship ministry by sending letters to every parish family reminding them of the parish's commitment to civic involvement and encouraging voter registration for members who are citizens but have not yet registered.

APPENDIX

- Historical Data 9
- Registered Voter Turnout Bar Graph 10
- Difference in Voter Turnout Bar Graph 11
- Voter Registration by Age and Gender Bar Graph 12
- Registered Voters vs. Actual Voters September 2006 Bar Graph 13
- Registered Voters vs. Actual Voters November 2006 Bar Graph 14

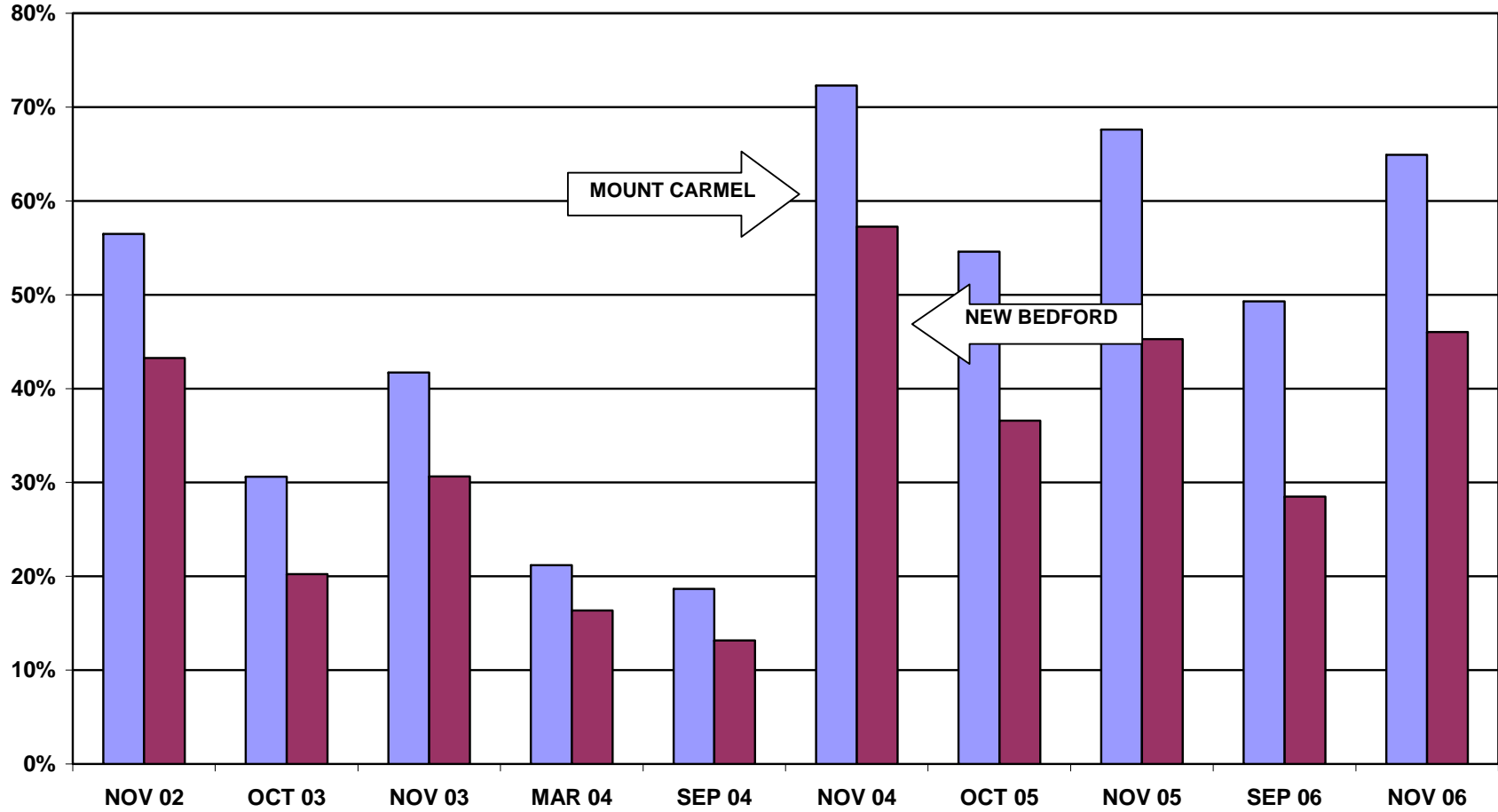
**HISTORICAL DATA: MOUNT CARMEL PARISH
REGISTRATION - VOTING**

HEADS OF HOUSEHOLD RESIDING IN NEW BEDFORD	3,584
HEADS OF HOUSEHOLD REGISTERED TO VOTE IN NEW BEDFORD	1,673
ALL HOUSEHOLD MEMBERS REGISTERED TO VOTE IN NEW BEDFORD	2,481

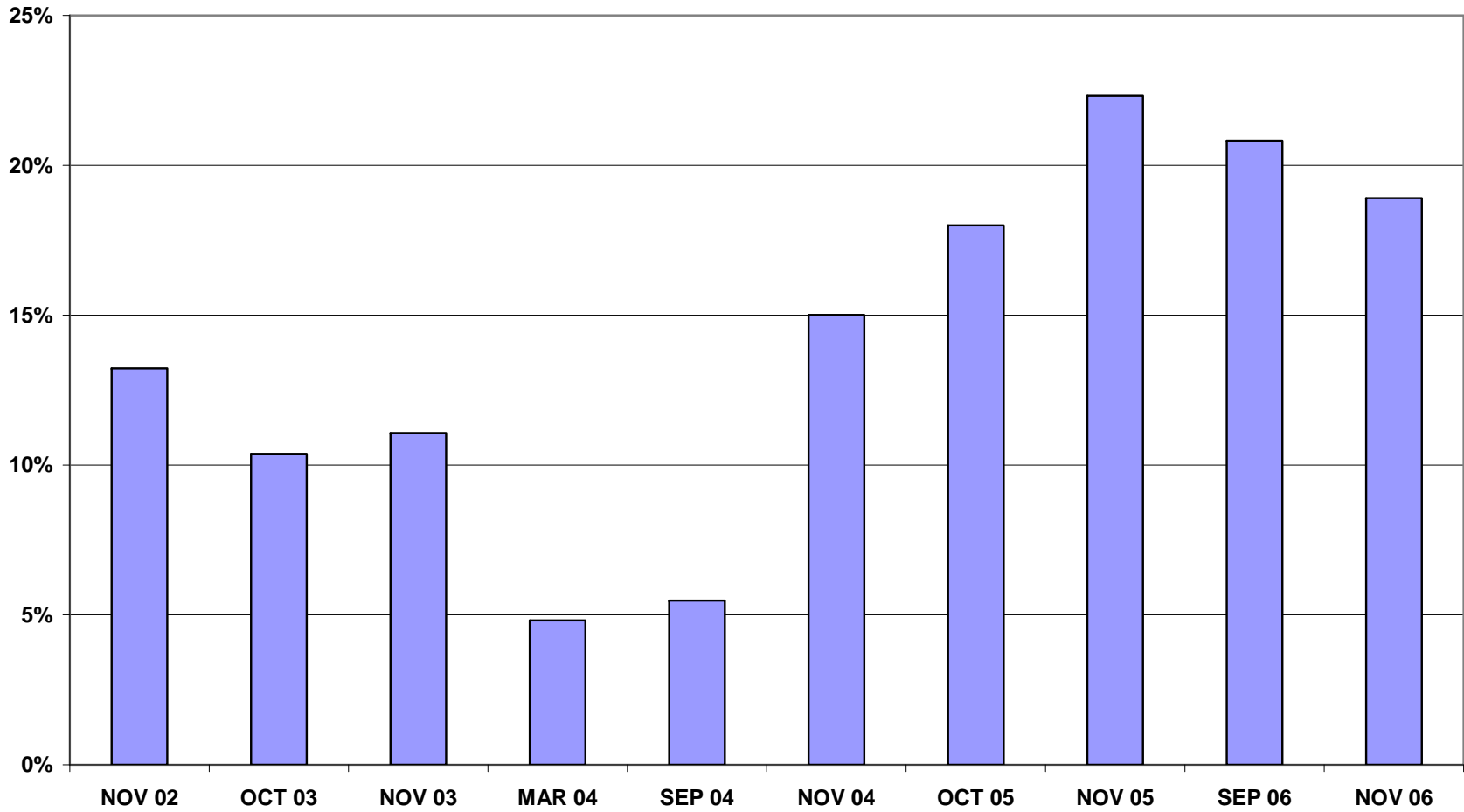
VOTING PERFORMANCE OF NEW BEDFORD RESIDENTS

	HEADS OF HOUSEHOLD WHO VOTED	AS PERCENT OF ALL REGISTERED MEMBERS ELIGIBLE TO VOTE	CITY WIDE VOTING HISTORY AS PERCENT OF ALL REGISTERED VOTERS)
		COMPARABLE STATISTICS	
VOTERS NOV 2002	1166	56.5%	43.3%
VOTERS OCT 2003	632	30.6%	20.2%
VOTERS NOV 2003	861	41.7%	30.6%
VOTERS MAR 2004	437	21.1%	16.4%
VOTERS SEP 2004	385	18.6%	13.2%
VOTERS NOV 2004	1492	72.3%	57.3%
VOTERS OCT 2005	900	54.5%	36.7%
VOTERS NOV 2005	1117	67.7%	47.6%
VOTERS SEP 2006	825	49.3%	29.5%
VOTERS NOV 2006	1086	64.9%	46.0%

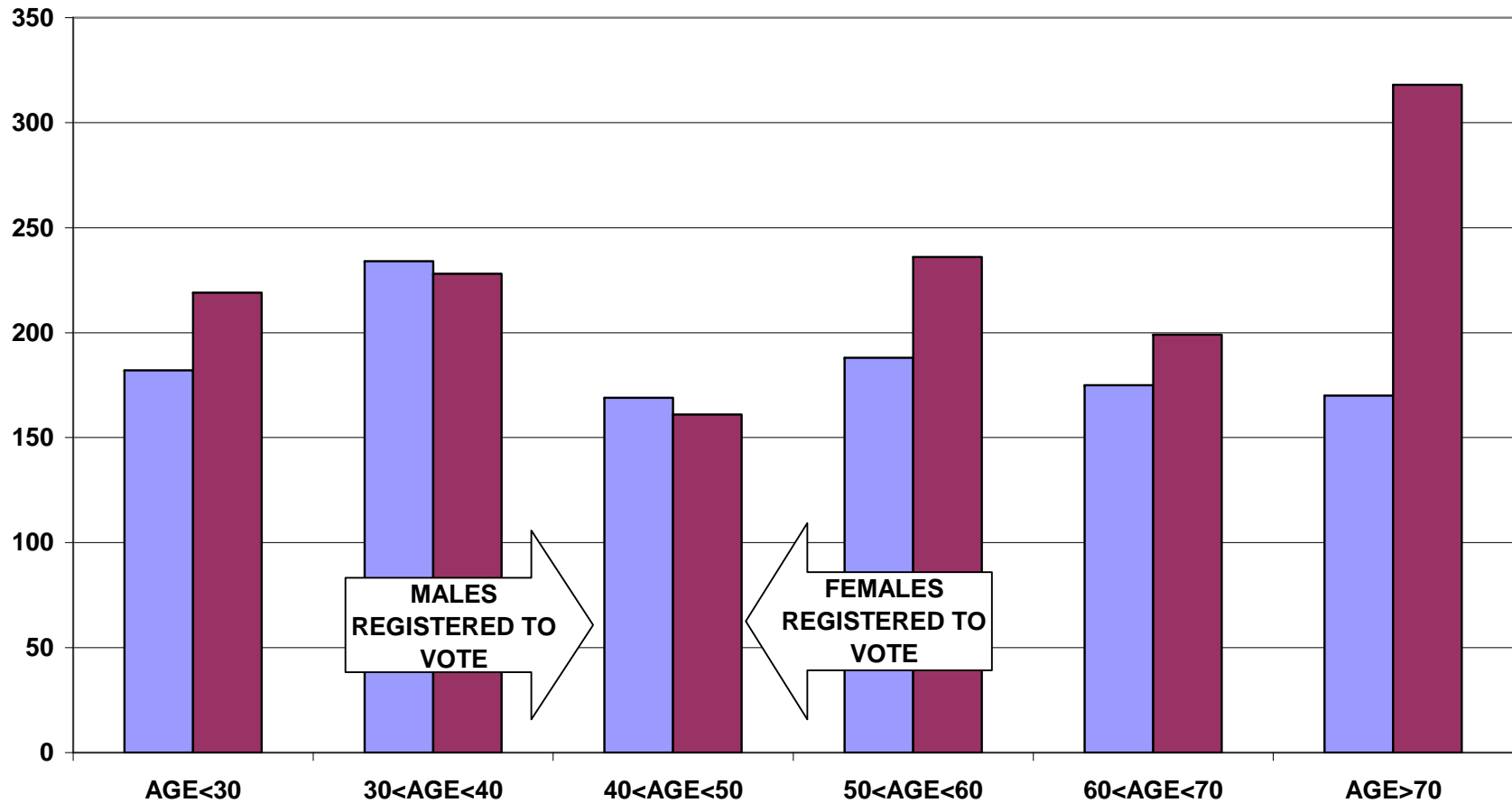
REGISTERED VOTER TURNOUT COMPARISON BETWEEN NEW BEDFORD AND MOUNT CARMEL HEADS OF HOUSEHOLD



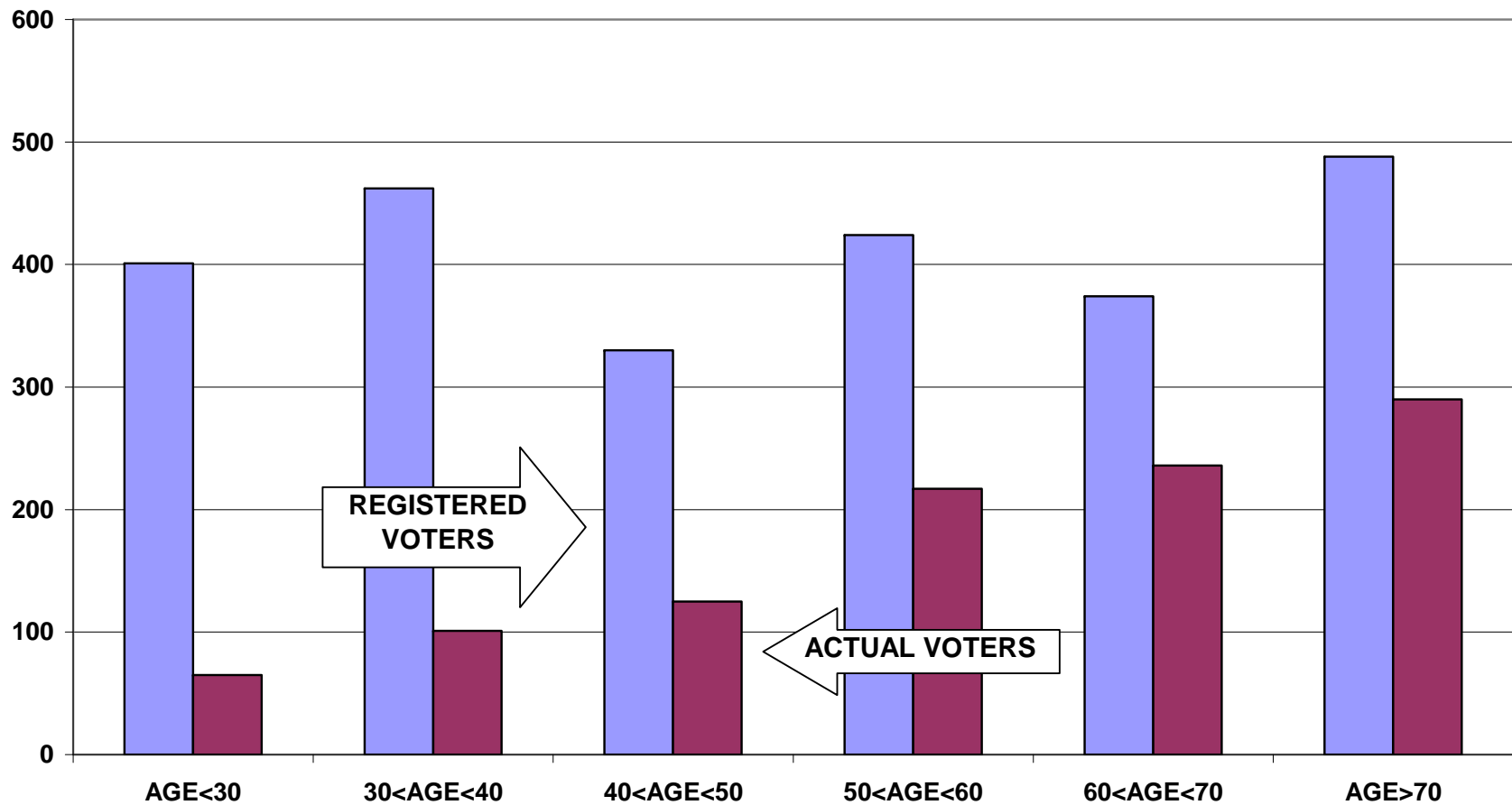
DIFFERENCE IN VOTER TURNOUT BETWEEN MOUNT CARMEL VOTERS AND NEW BEDFORD VOTERS HEADS OF HOUSEHOLD



**VOTER REGISTRATION BY AGE AND GENDER
MOUNT CARMEL
ALL HOUSEHOLD MEMBERS**



**REGISTERED VOTERS VERSUS ACTUAL VOTERS SEPTEMBER 2006
MOUNT CARMEL
ALL HOUSEHOLD MEMBERS**



**REGISTERED VOTERS VERSUS ACTUAL VOTERS NOVEMBER 2006
MOUNT CARMEL
ALL HOUSEHOLD MEMBERS**

