

THE PORTUGUESE AMERICAN CITIZENSHIP PROJECT
A NON-PARTISAN INITIATIVE TO PROMOTE CITIZENSHIP AND CIVIC INVOLVEMENT



**SAINT ANTHONY'S PARISH
NEW BEDFORD, MA**

**EVALUATION
OF
THE 2006 ELECTIONS**

July 10, 2007

SUPPORTED BY THE
LUSO-AMERICAN
FOUNDATION

REPORT CONTENTS

- **STATISTICS AND SUMMARY OF WORK** 3
- **RESULTS** 4
- **RECOMMENDATIONS** 7
- **APPENDIX** 8

KEY STATISTICS

- **Number of Parishioners: 1,460**
- **Heads of Household registered to vote: 837 (57% of all parishioners)**
- **All Household Members registered to vote: 1,200**
- **Voter Turnout* in September 2006 – 42% (city-wide turnout 30%)**
- **Voter Turnout in November 2006 – 63% (city-wide turnout 46%)**

SUMMARY OF WORK

St. Anthony has been an active participant in the Portuguese American Citizenship Project since 2003.

For the September 2006 Primary Elections and the November 2006 General Elections, postcards in Portuguese and English were sent to every registered parish voter reminding them of the date, polling hours, and location of the assigned polling station for each election.

* Voter turnout is the number of citizens voting in an election divided by the total number of citizens registered to vote

RESULTS

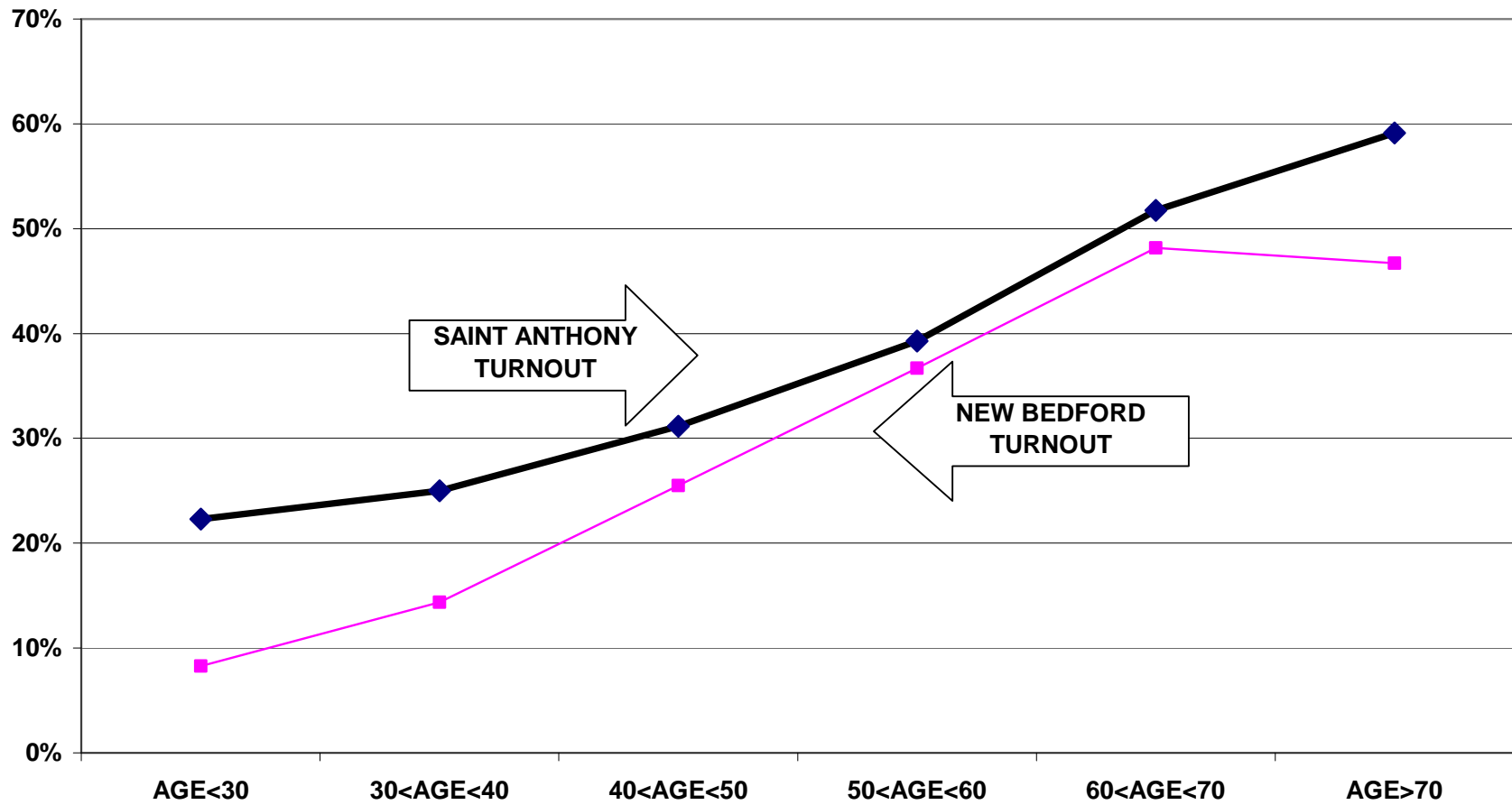
The St. Anthony voter turnout for the Fall 2006 elections was consistently higher than city-wide turnout. Heads of household turnout for the September 2006 Primary Elections was 42%, as compared to the city turnout of 30%. The St. Anthony heads of household turnout for the November 2006 General Elections was 63%, as compared to the city turnout of 46%.

Voter turnout is not uniform across age groups. Voters under 30 years of age and even those between 30 and 40 years old had lower turnout rates than the older voters. This is true for the registered voters in the parish and true for the registered voters in the community at large.

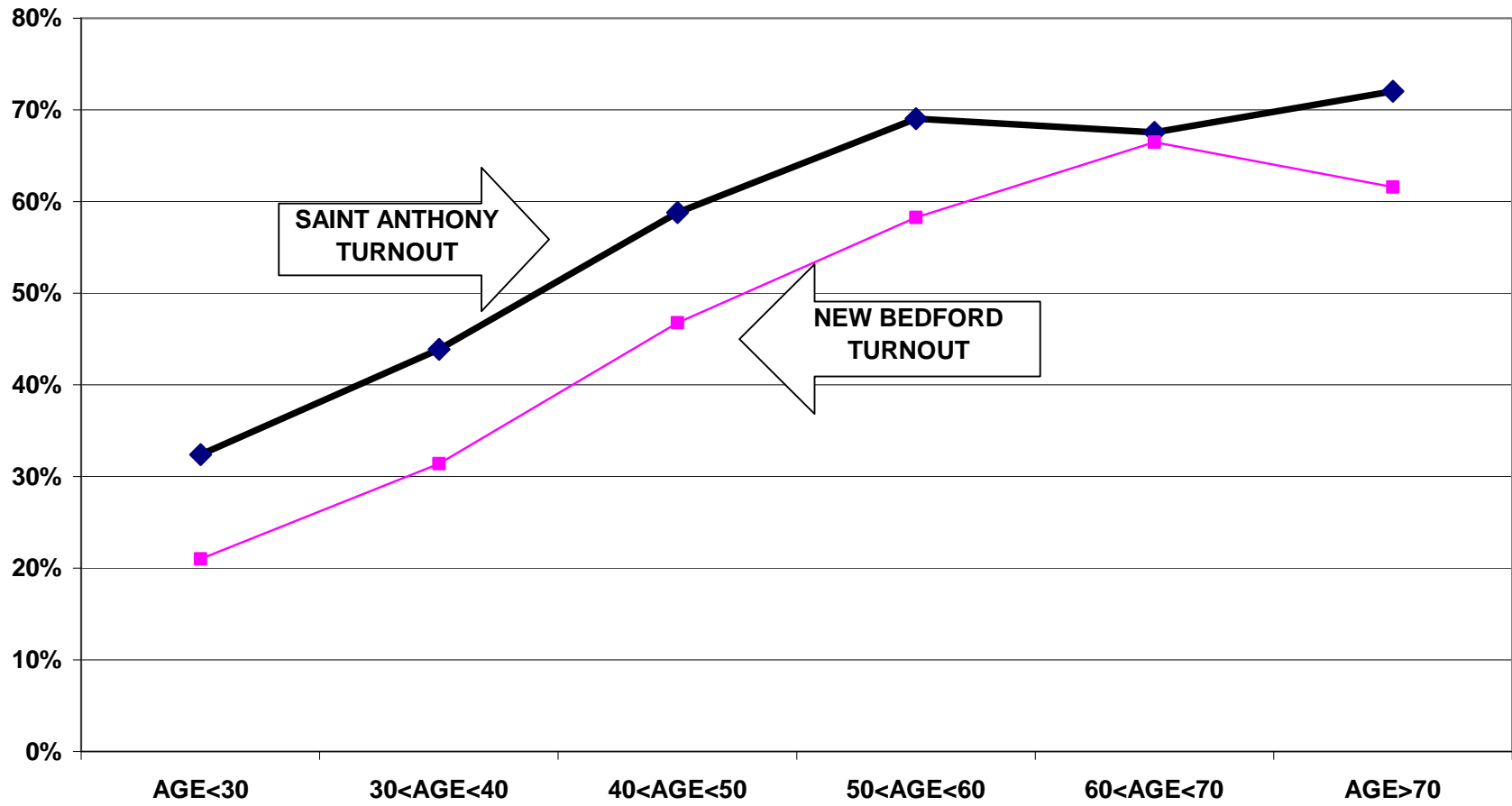
For example, voters associated with the parish under 30 years old had a 22% turnout rate in the September 2006 elections while voters between 60 and 70 years old had a 52% turnout rate. For the November 2006 elections, the under 30 year old associated parishioners had a 32% turnout rate compared to a 69% turnout rate for voters between 60 and 70 years old.

The following graphs for the September and November elections illustrate the relationship between turnout rates and age. These graphs refer to all family members associated with the parish, not just heads of household.

**TURNOUT BY AGE SEPTEMBER 2006
SAINT ANTHONY'S
ALL HOUSEHOLD MEMBERS**



TURNOUT BY AGE NOVEMBER 2006 SAINT ANTHONY'S ALL HOUSEHOLD MEMBERS



RECOMMENDATIONS

- The parish should examine measures to increase voter turnout in the under 30 year old and 30 to 40 year old categories. While low voter turnout rates for those under 40 years old is not a problem unique to St. Anthony's, it is important to discuss ways the parish can address this issue so as to increase their efforts towards faithful citizenship.
- The parish could consider holding a Candidates' Night for the 2007 elections in the North End of New Bedford, similar to Candidates' Nights held at Mount Carmel.

APPENDIX

- Historical Data 9
- Registered Voter Turnout Bar Graph 10
- Difference in Voter Turnout Bar Graph 11
- Voter Registration by Age and Gender Bar Graph 12
- Registered Voters vs. Actual Voters September 2006 Bar Graph 13
- Registered Voters vs. Actual Voters November 2006 Bar Graph 14

**HISTORICAL DATA – SAINT ANTHONY PARISH
REGISTRATION - VOTING**

MEMBERS 1,460

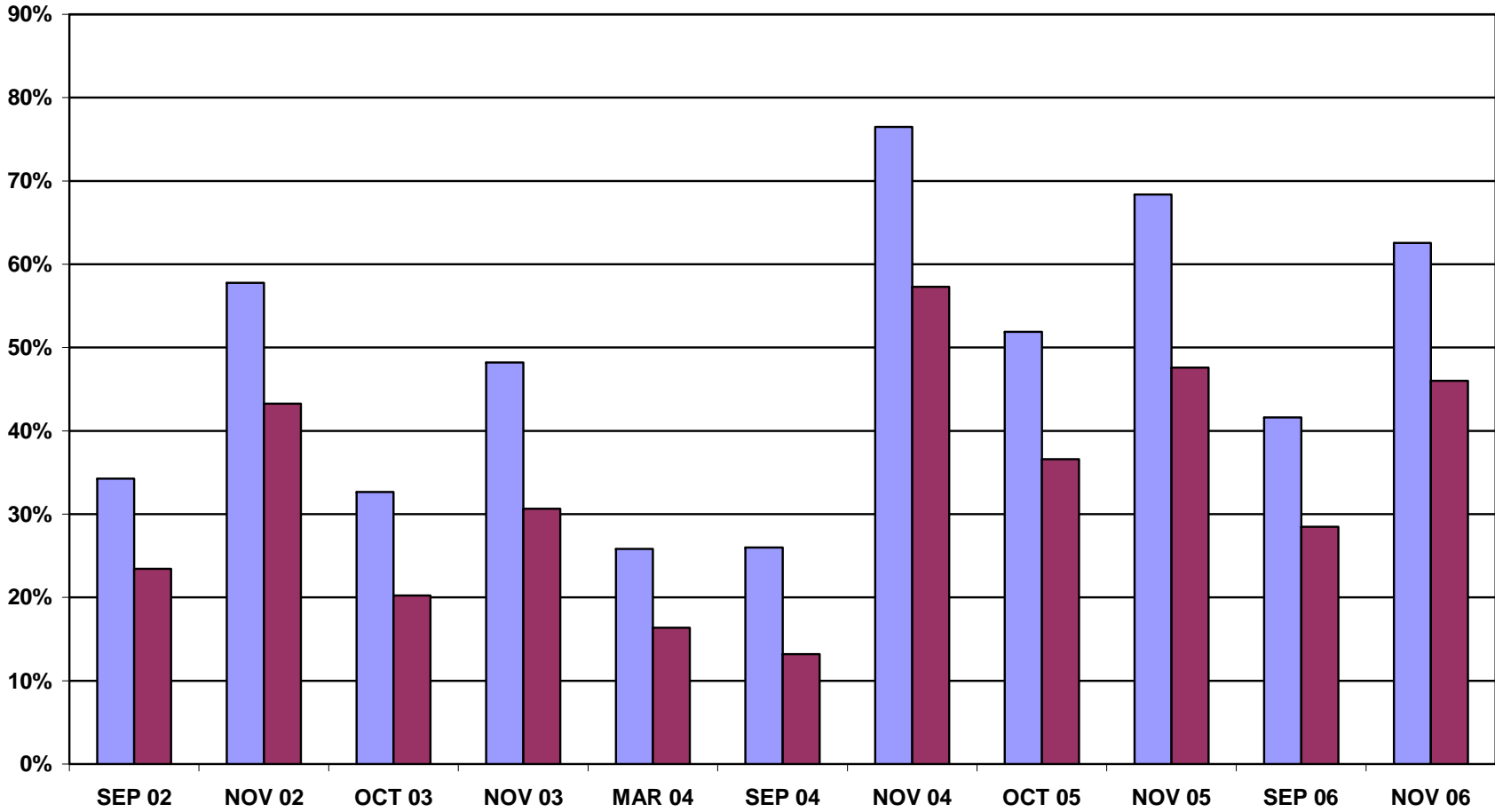
**MEMBERS REGISTERED
TO VOTE IN NEW BEDFORD 697 HEADS OF HOUSEHOLD**

986 ALL FAMILY MEMBERS

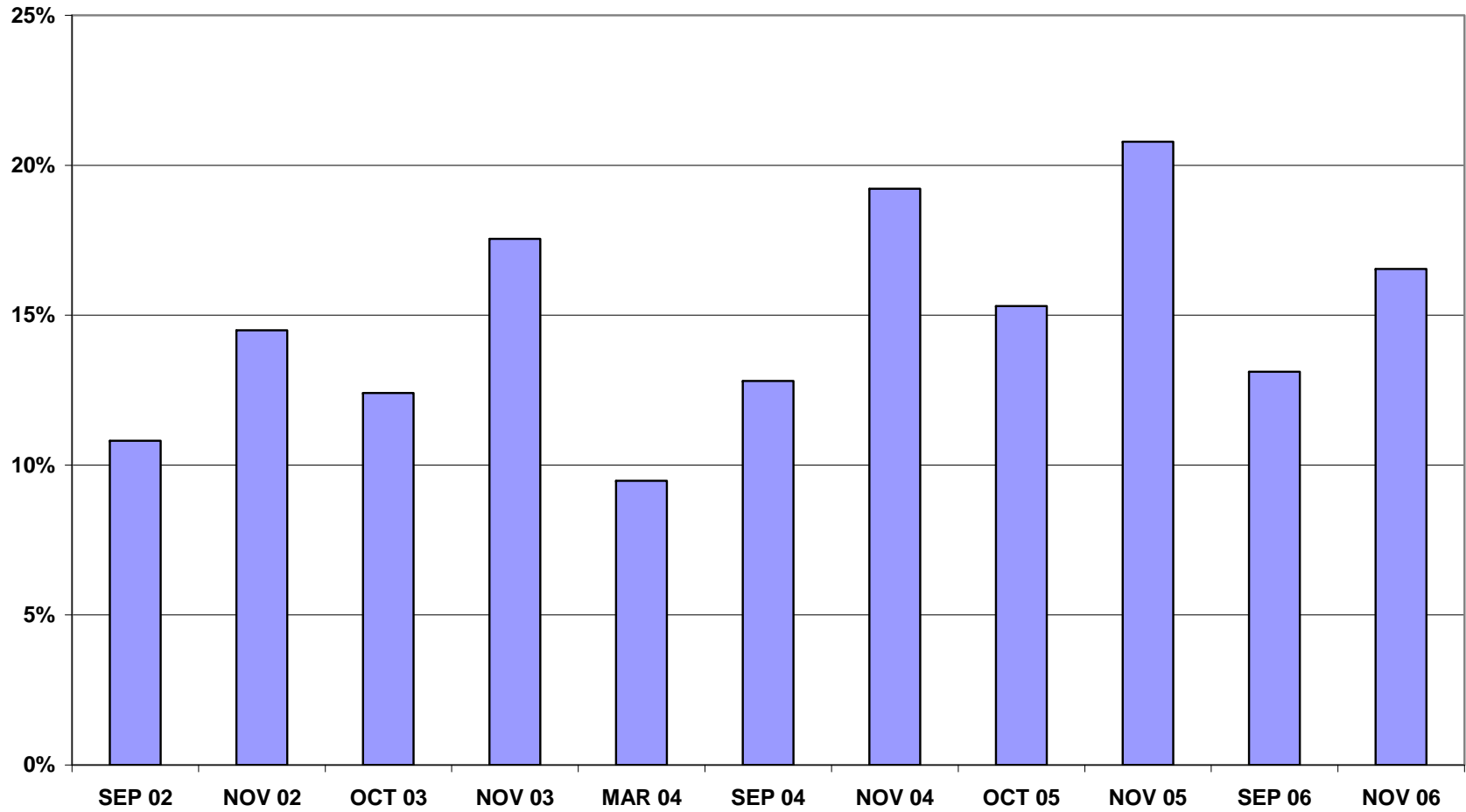
VOTING PERFORMANCE OF NEW BEDFORD RESIDENTS

	HEADS OF HOUSEHOLD WHO VOTED	AS PERCENT OF ALL REGISTERED MEMBERS ELIGIBLE TO VOTE	CITYWIDE VOTING HISTORY AS PERCENT OF ALL REGISTERED VOTERS)
		COMPARABLE STATISTICS	
VOTERS SEP 2002	236	34.3%	23.4%
VOTERS NOV 2002	398	57.8%	43.3%
VOTERS OCT 2003	225	32.7%	20.2%
VOTERS NOV 2003	332	48.2%	30.6%
VOTERS MAR 2004	178	25.9%	16.4%
VOTERS SEP 2004	179	26.0%	13.2%
VOTERS NOV 2004	527	76.5%	57.3%
VOTERS OCT 2005	315	48.8%	36.7%
VOTERS NOV 2005	415	63.6%	47.6%
VOTERS SEP 2006	290	41.6%	29.5%
VOTERS NOV 2006	436	62.6%	46.0%

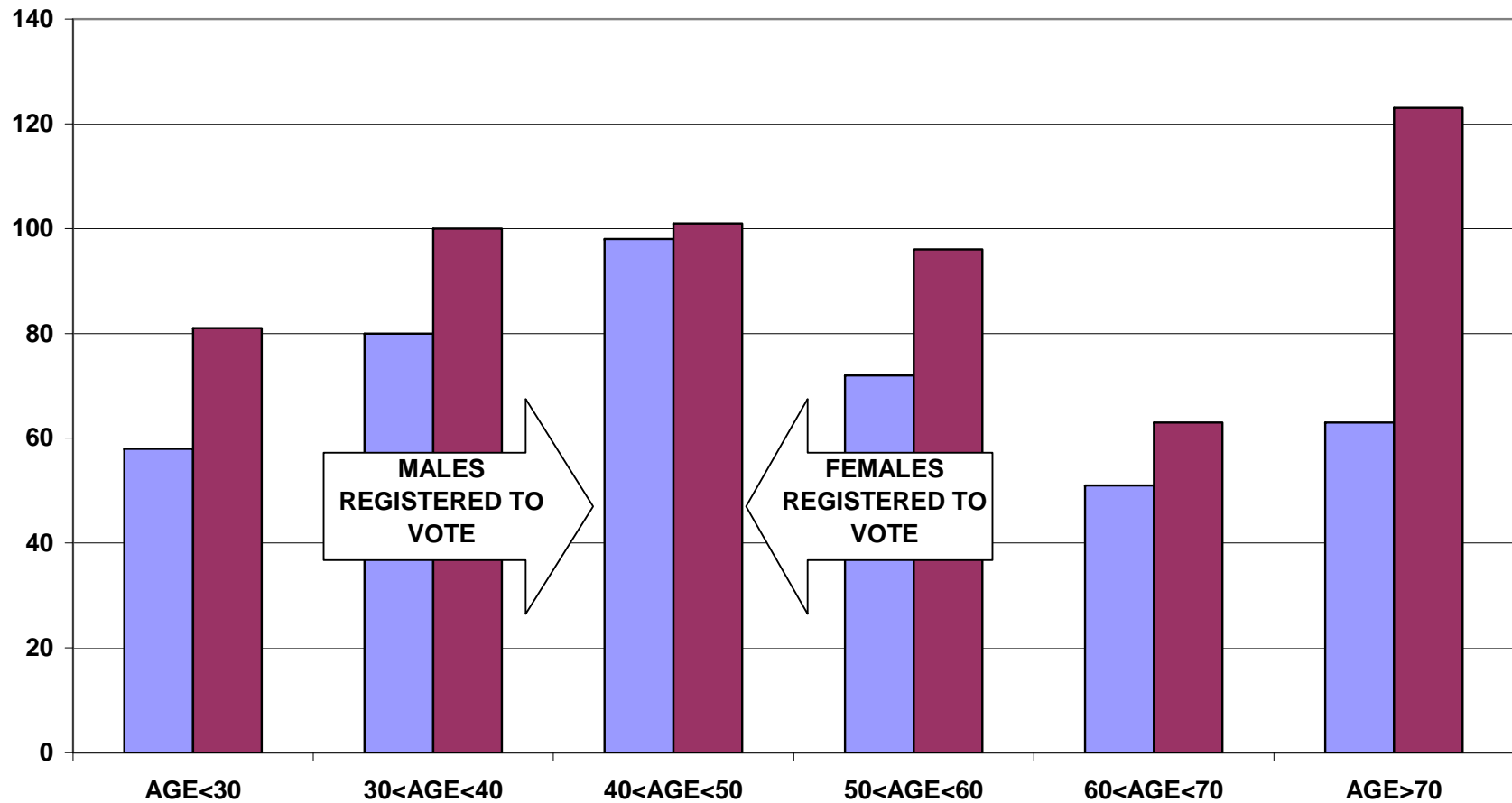
REGISTERED VOTER TURNOUT COMPARISON BETWEEN NEW BEDFORD AND SAINT ANTHONY'S HEADS OF HOUSEHOLD



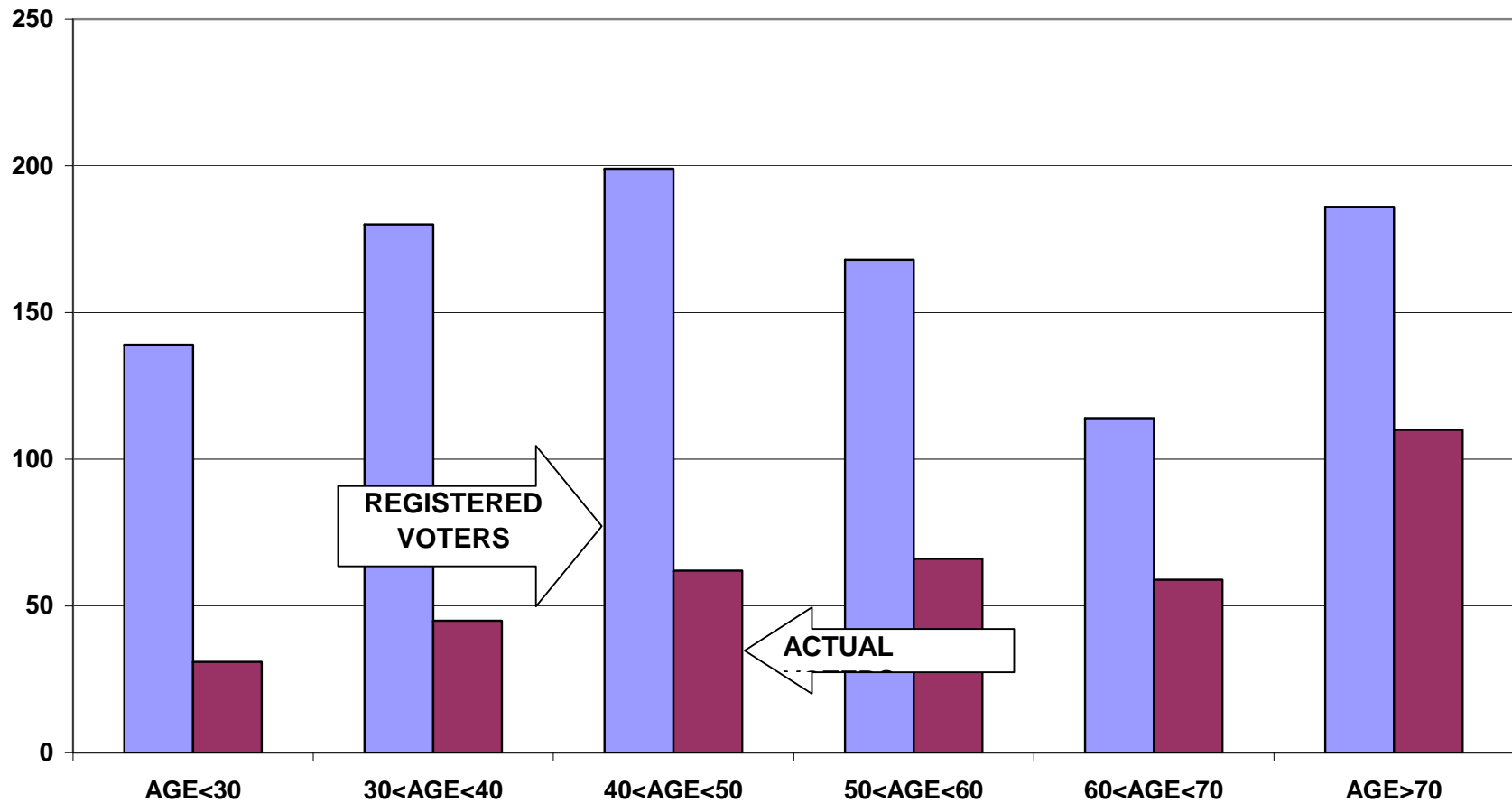
**DIFFERENCE IN VOTER TURNOUT BETWEEN
SAINT ANTHONY'S VOTERS AND NEW BEDFORD VOTERS
HEADS OF HOUSEHOLD**



**VOTER REGISTRATION BY AGE AND GENDER
SAINT ANTHONY'S
ALL HOUSEHOLD MEMBERS**



**REGISTERED VOTERS VERSUS ACTUAL VOTERS SEPTEMBER 2006
SAINT ANTHONY'S
ALL HOUSEHOLD MEMBERS**



**REGISTERED VOTERS VERSUS ACTUAL VOTERS NOVEMBER 2006
SAINT ANTHONY'S
ALL HOUSEHOLD MEMBERS**

