

THE PORTUGUESE AMERICAN CITIZENSHIP PROJECT
A NON-PARTISAN INITIATIVE TO PROMOTE CITIZENSHIP AND CIVIC INVOLVEMENT



**ANNUNCIATION OF OUR LORD PARISH
TAUNTON, MA**

**EVALUATION
OF
THE 2006 ELECTIONS**

August 1, 2007

SUPPORTED BY THE
LUSO-AMERICAN
FOUNDATION

REPORT CONTENTS

- **STATISTICS AND SUMMARY OF WORK** 3
- **RESULTS** 4
- **RECOMMENDATIONS** 7
- **APPENDIX** 8

KEY STATISTICS

- **Number of Parishioners in Taunton and East Taunton: 1,774**
- **Heads of Household registered to vote in Taunton: 1,066**
- **All Household Members registered to vote in Taunton: 1,321**
- **Heads of Household voter turnout* in September 2006 – 34% (citywide turnout 21%)**
- **Heads of Household voter turnout in November 2006 – 61% (citywide turnout 45%)**

SUMMARY OF WORK

Annunciation of Our Lord has been an active participant in the Portuguese American Citizenship Project since 2002.

For the September 2006 Primary Elections and the November 2006 General Elections, postcards in Portuguese and English were sent to all registered parish voters reminding them of the date, polling hours, and location of the assigned polling station for each election.

* Voter turnout is the number of citizens voting in an election divided by the total number of citizens registered to vote

RESULTS

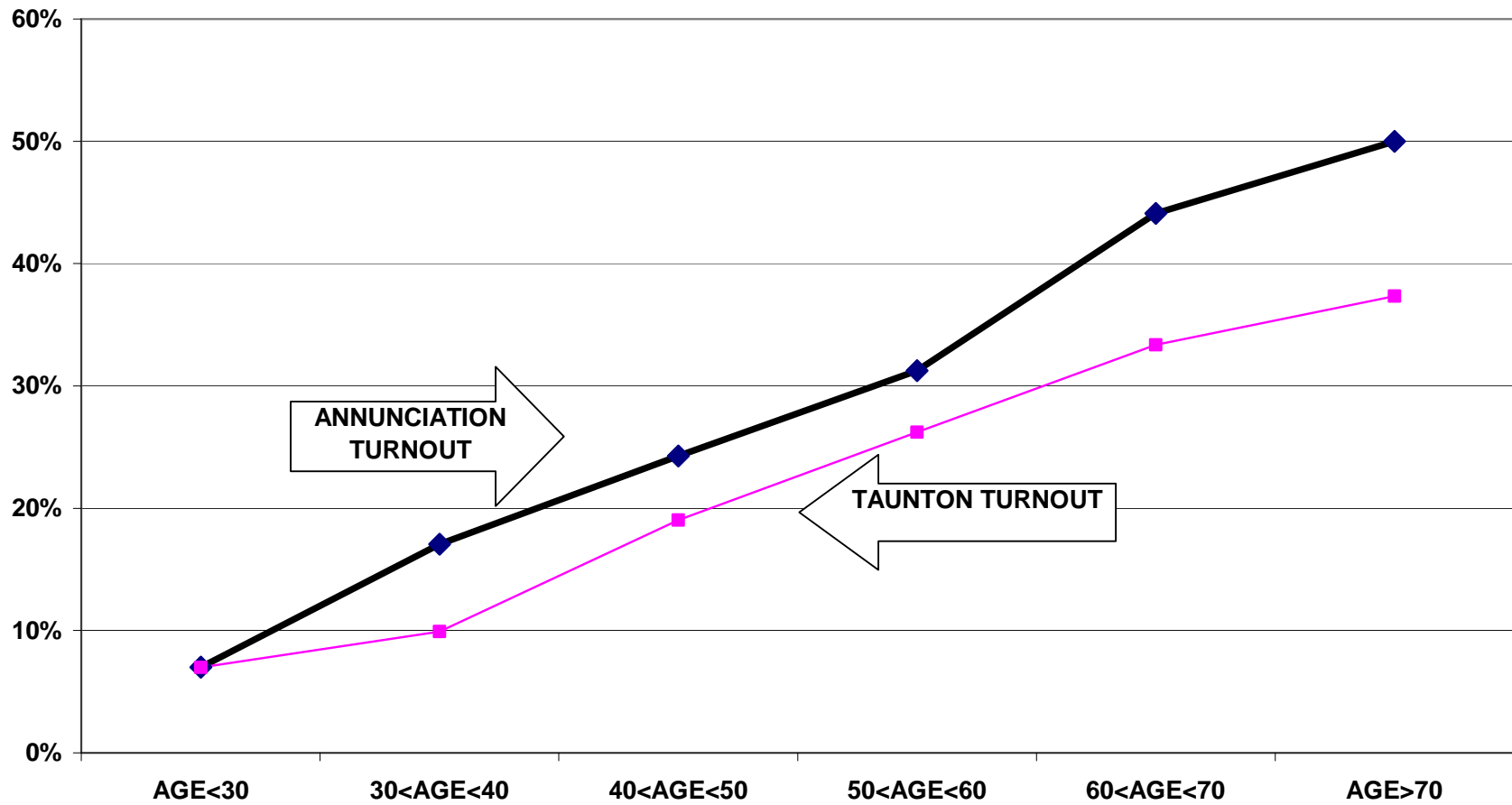
Annunciation of Our Lord voter turnout for the Fall 2006 elections was consistently higher than citywide turnout. Heads of household turnout for the September 2006 Primary Elections was 34%, as compared to the citywide turnout of 21%. The Annunciation of Our Lord heads of household turnout for the November 2006 General Elections was 61%, as compared to the citywide turnout of 45%.

Voter turnout is not uniform across age groups. Voters under 30 years of age and even those between 30 and 40 years old had lower turnout rates than the older voters. This is true for the registered voters in the parish and true for the registered voters in the community at large.

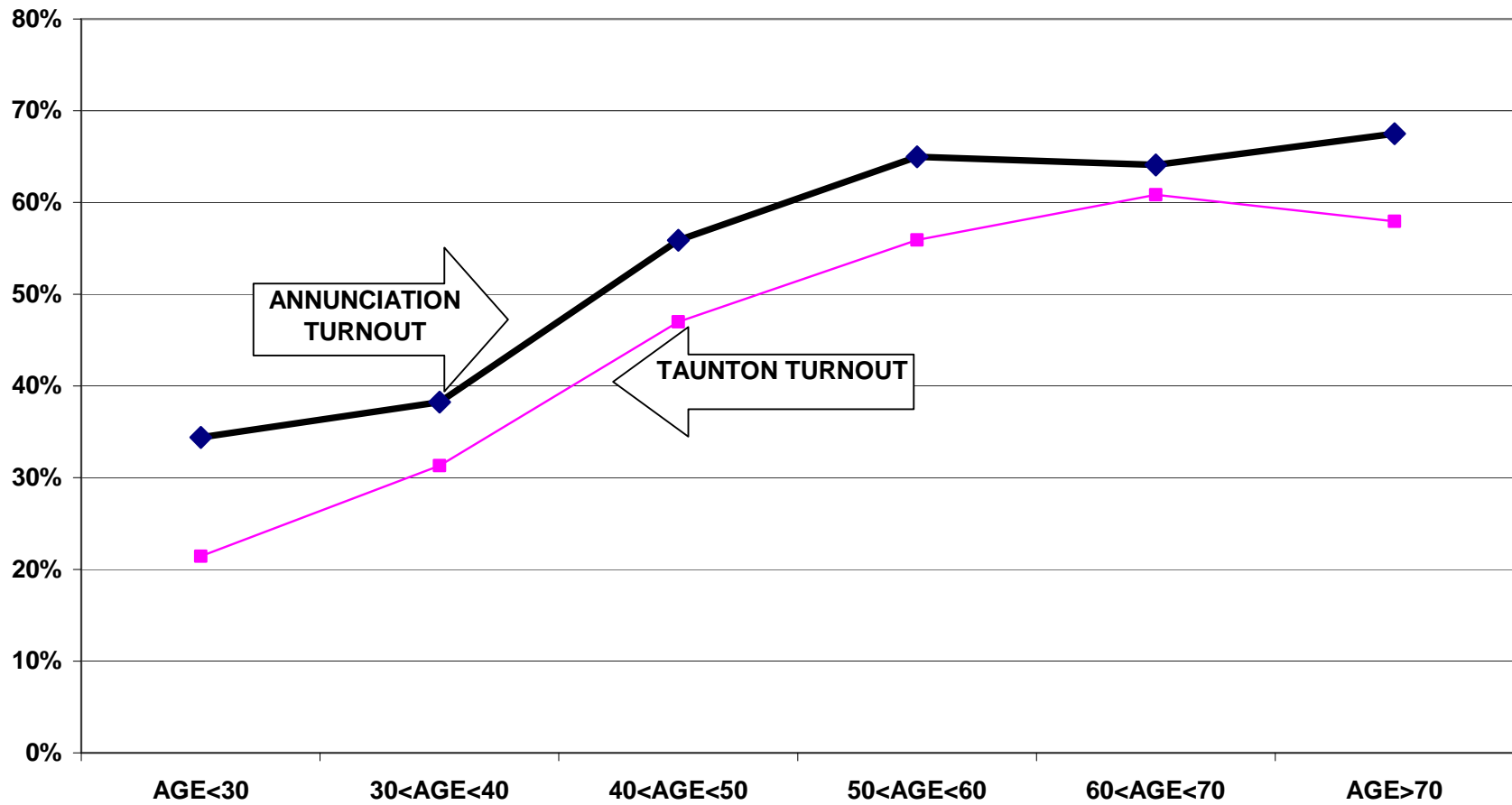
For example, voters under 30 years old had a 7% turnout rate in the September 2006 elections while voters between 60 and 70 years old had a 44% turnout rate. For the November 2006 elections, the under 30 year old parishioners had a 34% turnout rate compared to a 64% turnout rate for voters between 60 and 70 years old.

The following graphs for the September and November 2006 elections illustrate the relationship between turnout rates and age. These graphs refer to all family members associated with the parish, not just heads of household.

**TURNOUT BY AGE SEPTEMBER 2006
ANNUNCIATION OF OUR LORD
ALL HOUSEHOLD MEMBERS**



**TURNOUT BY AGE NOVEMBER 2006
ANNUNCIATION OF OUR LORD
ALL HOUSEHOLD MEMBERS**



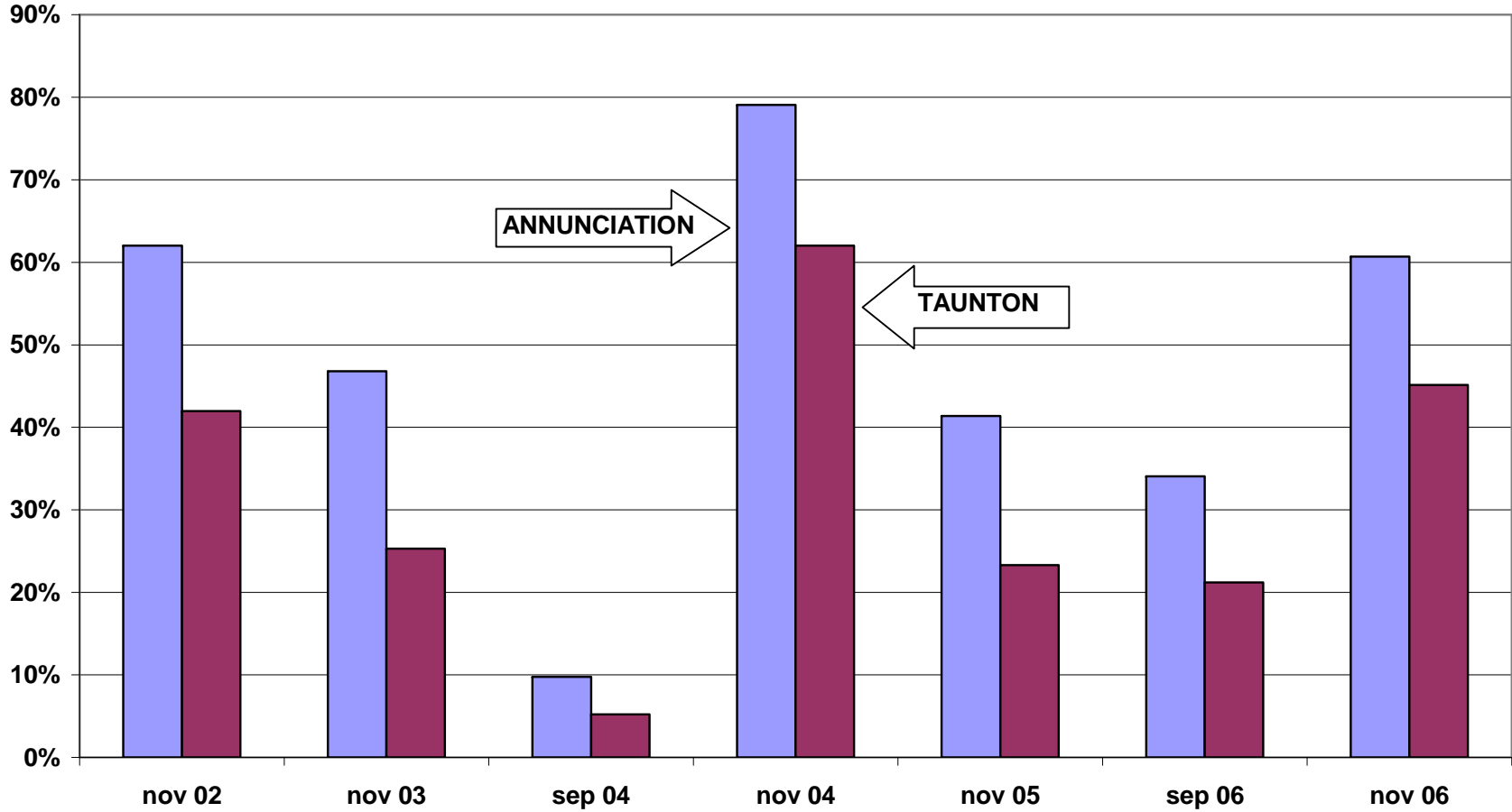
RECOMMENDATIONS

- The parish should examine measures to increase voter turnout in the under 30 year old and 30 to 40 year old categories. While low voter turnout rates for those under 40 years old is not a problem unique to Annunciation of Our Lord, it is important to discuss ways the parish can address this issue so as to increase their efforts towards faithful citizenship.

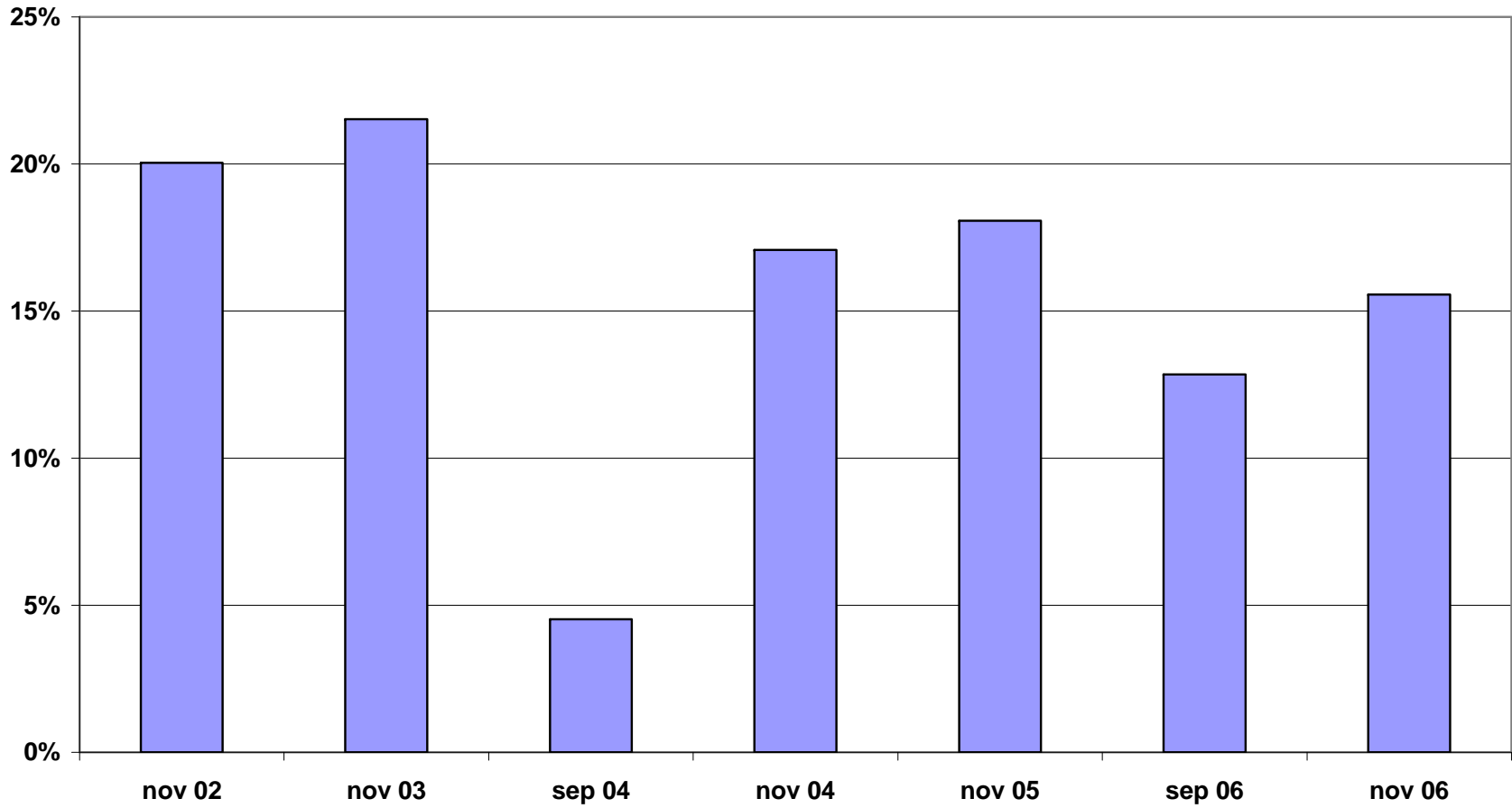
APPENDIX

- Historical Data 9
- Registered Voter Turnout Bar Graph 10
- Difference in Voter Turnout Bar Graph 11
- Voter Registration by Age and Gender Bar Graph 12
- Registered Voters vs. Actual Voters September 2006 Bar Graph 13
- Registered Voters vs. Actual Voters November 2006 Bar Graph 14

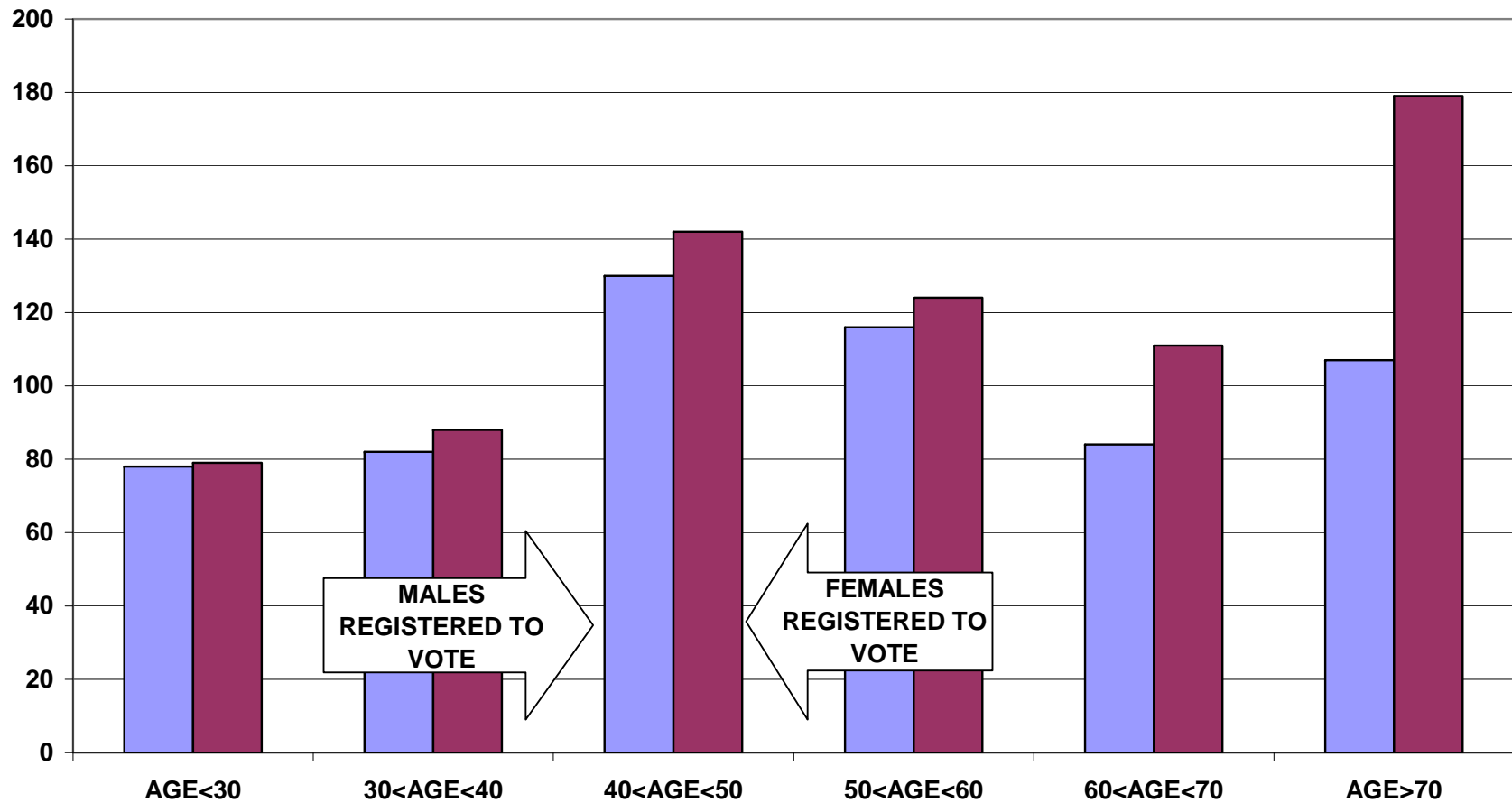
REGISTERED VOTER TURNOUT COMPARISON BETWEEN TAUNTON AND ANNUNCIATION OF OUR LORD HEADS OF HOUSEHOLD



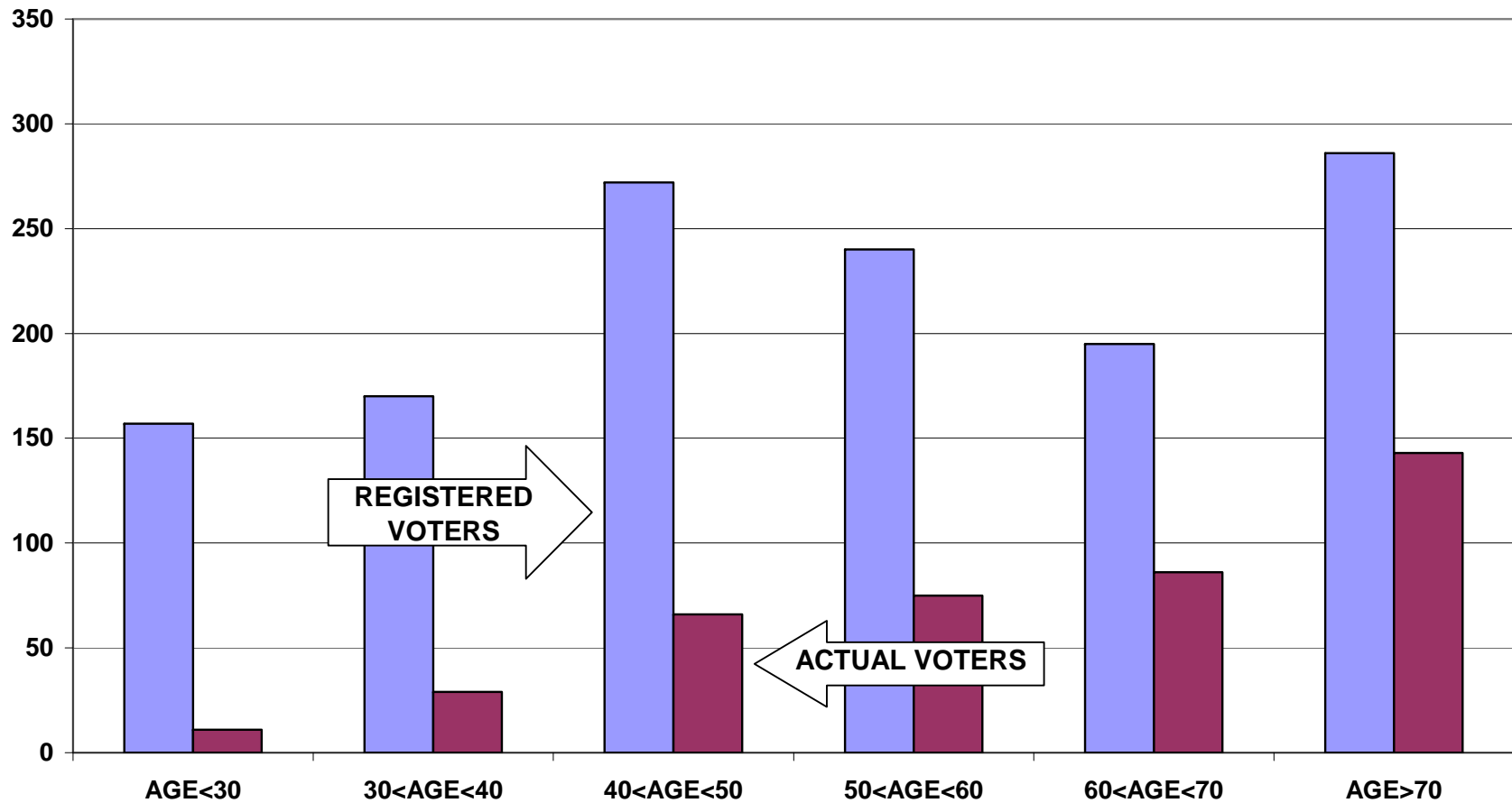
**DIFFERENCE IN VOTER TURNOUT BETWEEN
ANNUNCIATION OF OUR LORD VOTERS AND TAUNTON VOTERS
HEADS OF HOUSEHOLD**



**VOTER REGISTRATION BY AGE AND GENDER
ANNUNCIATION OF OUR LORD
ALL HOUSEHOLD MEMBERS**



**REGISTERED VOTERS VERSUS ACTUAL VOTERS SEPTEMBER 2006
ANNUNCIATION OF OUR LORD
ALL HOUSEHOLD MEMBERS**



**REGISTERED VOTERS VERSUS ACTUAL VOTERS NOVEMBER 2006
ANNUNCIATION OF OUR LORD
ALL HOUSEHOLD MEMBERS**

