

THE PORTUGUESE AMERICAN CITIZENSHIP PROJECT
A NON-PARTISAN INITIATIVE TO PROMOTE CITIZENSHIP AND CIVIC INVOLVEMENT



**ST. ANTHONY PARISH
TAUNTON, MA**

**EVALUATION
OF
THE 2006 ELECTIONS**

August 1, 2007

SUPPORTED BY THE
LUSO-AMERICAN
FOUNDATION

REPORT CONTENTS

- **STATISTICS AND SUMMARY OF WORK** 3
- **RESULTS** 4
- **RECOMMENDATIONS** 7
- **APPENDIX** 8

KEY STATISTICS

- **Number of Parishioners in Taunton and East Taunton: 2,275**
- **Heads of Household registered to vote in Taunton: 1,207**
- **All Household Members registered to vote in Taunton: 1,648**
- **Heads of Household voter turnout* in September 2006 – 37% (citywide turnout 21%)**
- **Heads of Household voter turnout in November 2006 – 61% (citywide turnout 45%)**

SUMMARY OF WORK

St. Anthony has been an active participant in the Portuguese American Citizenship Project since 2002.

For the September 2006 Primary Elections and the November 2006 General Elections, postcards in Portuguese and English were sent to all registered parish voters reminding them of the date, polling hours, and location of the assigned polling station for each election.

* Voter turnout is the number of citizens voting in an election divided by the total number of citizens registered to vote. Voter turnout statistics are based on Taunton residents only.

RESULTS

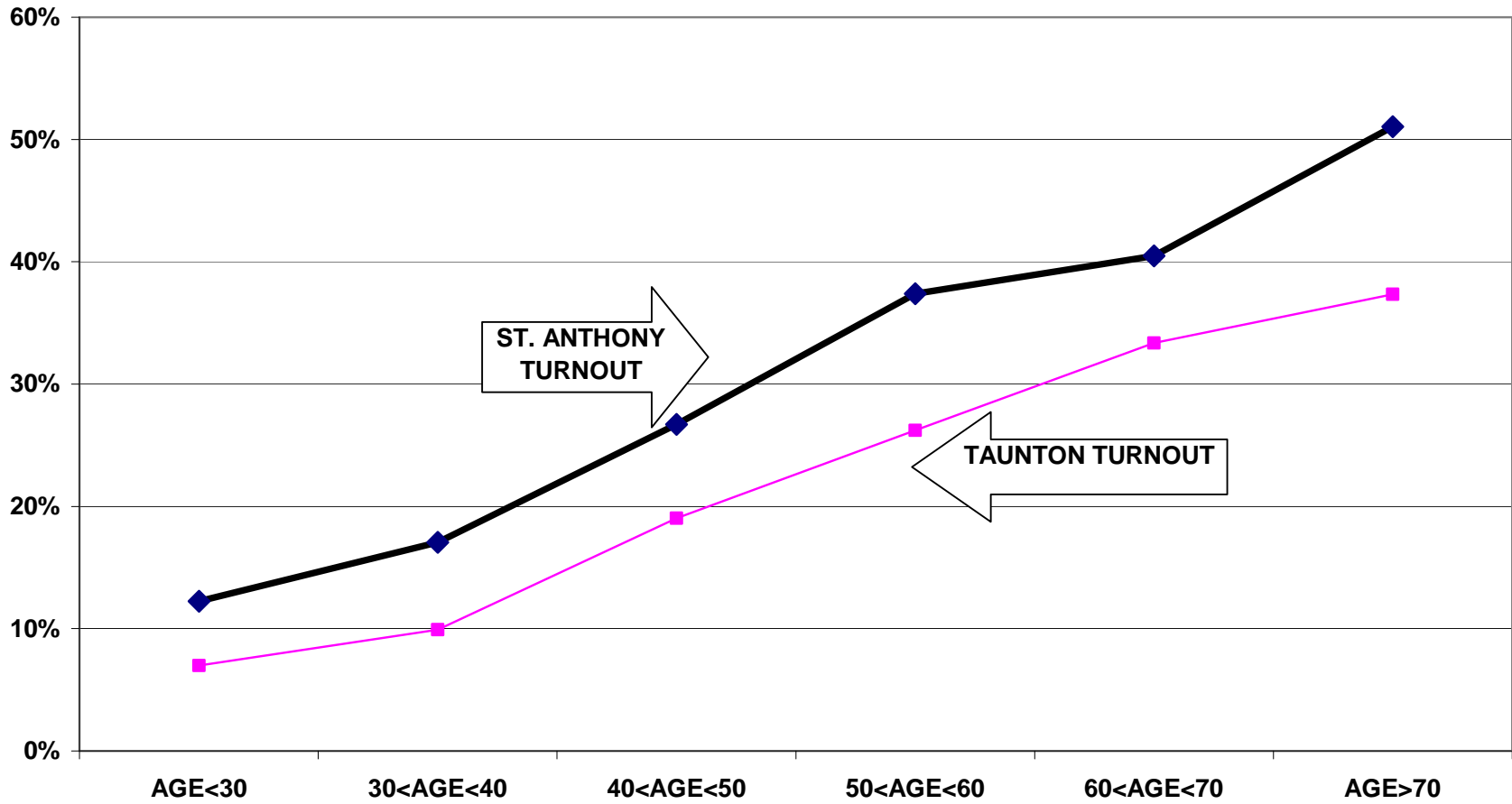
St. Anthony voter turnout for the Fall 2006 elections was consistently higher than citywide turnout. Heads of household turnout for the September 2006 Primary Elections was 37%, as compared to the city turnout of 21%. The St. Anthony heads of household turnout for the November 2006 General Elections was 61%, as compared to the city turnout of 45%.

Voter turnout is not uniform across age groups. Voters under 30 years of age and even those between 30 and 40 years old had lower turnout rates than the older voters. This is true for the registered voters in the parish and true for the registered voters in the community at large.

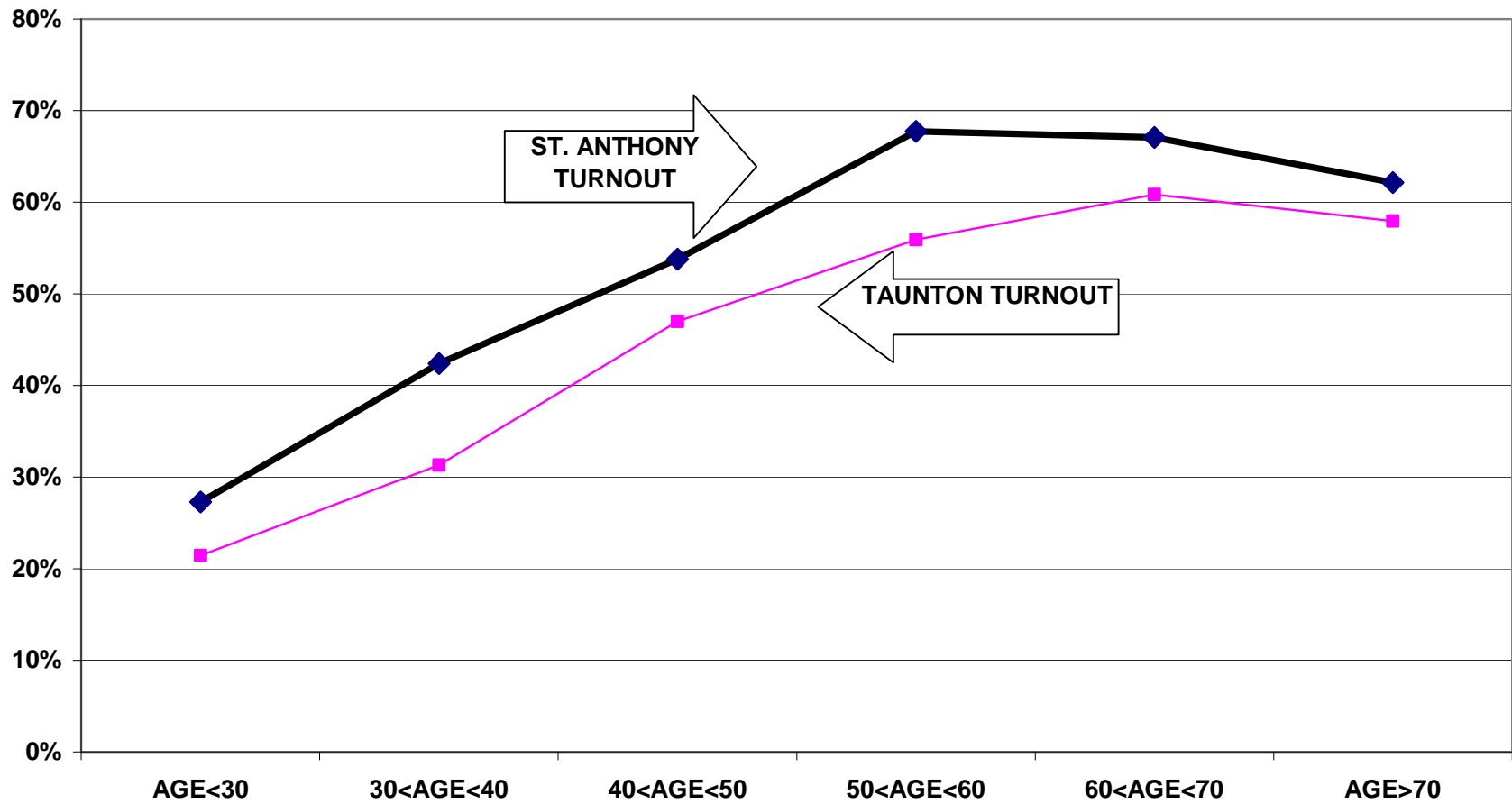
For example, voters under 30 years old had a 12% turnout rate in the September 2006 elections while voters between 60 and 70 years old had a 40% turnout rate. For the November 2006 elections, the under 30 year old parishioners had a 27% turnout rate compared to a 67% turnout rate for voters between 60 and 70 years old.

The following graphs for the September and November 2006 elections illustrate the relationship between turnout rates and age. These graphs refer to all family members associated with the parish, not just heads of household.

TURNOUT BY AGE SEPTEMBER 2006 ST. ANTHONY ALL HOUSEHOLD MEMBERS



TURNOUT BY AGE NOVEMBER 2006 ST. ANTHONY ALL HOUSEHOLD MEMBERS



RECOMMENDATIONS

- The parish should examine measures to increase voter turnout in the under 30 year old and 30 to 40 year old categories. While low voter turnout rates for those under 40 years old is not a problem unique to St. Anthony, it is important to discuss ways the parish can address this issue so as to increase their efforts towards faithful citizenship.
- The parish should examine ways to increase its overall voter turnout rate. While the parishioners have generally outvoted the city overall, the difference between St. Anthony's turnout and the Taunton city turnout is growing smaller. The parish leadership should specifically examine the inclusion of polling location in the voter cards sent out rather than cards with just the date of the election and polling hours.

APPENDIX

- Historical Data 9
- Registered Voter Turnout Bar Graph 10
- Difference in Voter Turnout Bar Graph 11
- Voter Registration by Age and Gender Bar Graph 12
- Registered Voters vs. Actual Voters September 2006 Bar Graph 13
- Registered Voters vs. Actual Voters November 2006 Bar Graph 14

**HISTORICAL DATA: ST. ANTHONY PARISH
REGISTRATION - VOTING**

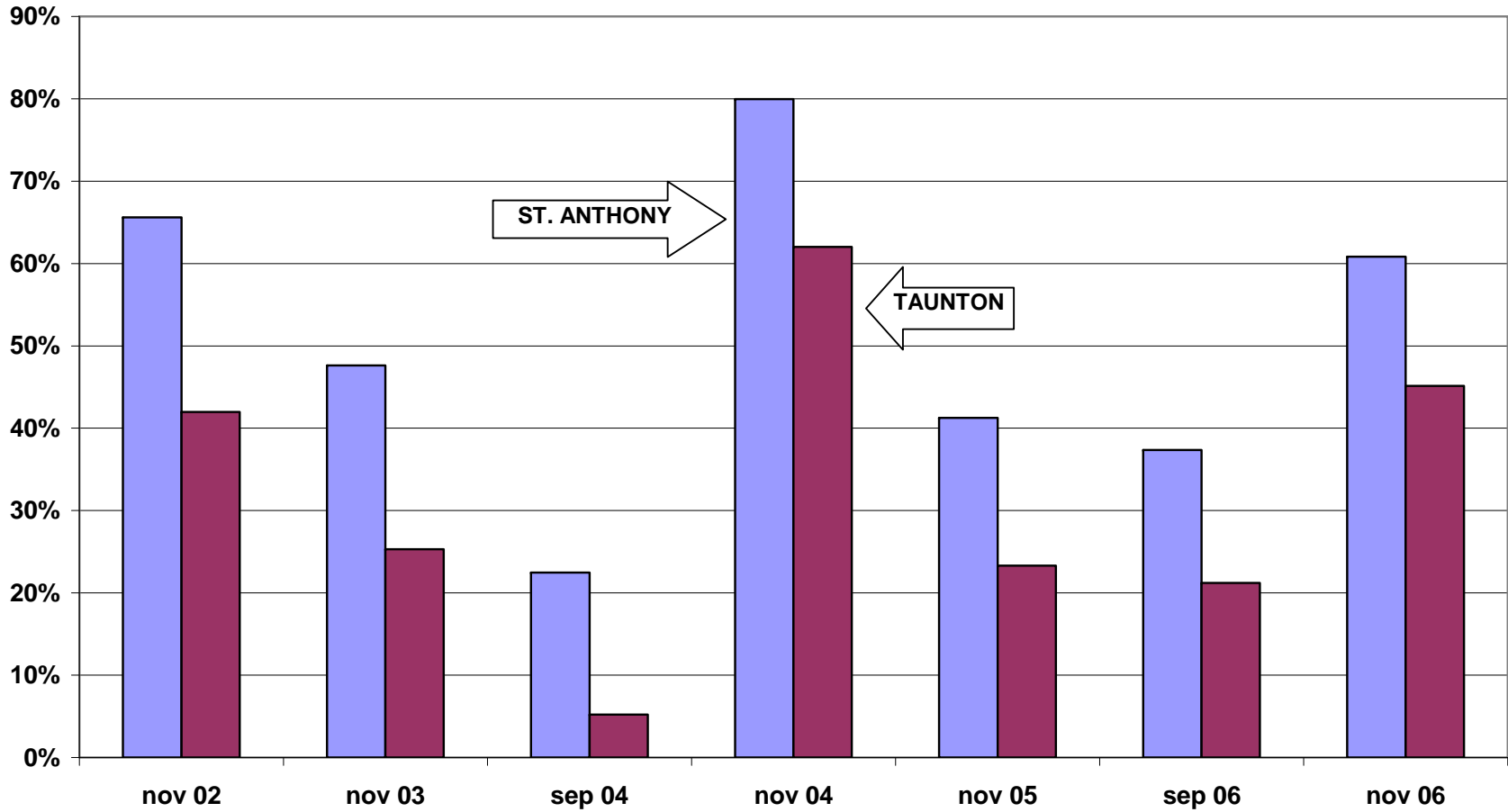
MEMBERS RESIDING IN TAUNTON OR EAST TAUNTON	2,275	
MEMBERS REGISTERED TO VOTE IN TAUNTON	1,207	HEADS OF HOUSEHOLD
	1,648	ALL FAMILY MEMBERS

VOTING PERFORMANCE OF TAUNTON RESIDENTS

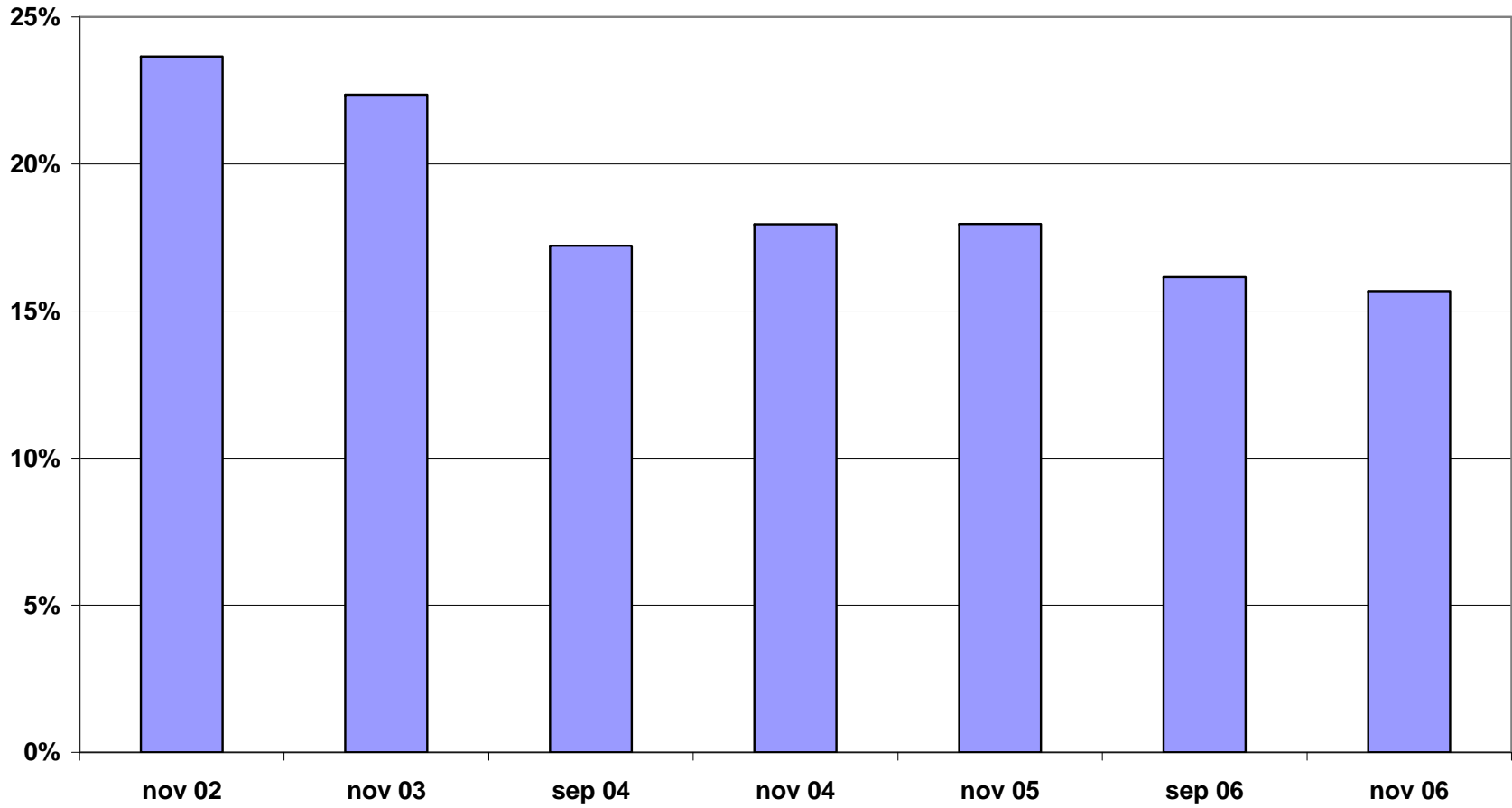
	HEADS OF HOUSEHOLD	AS PERCENT OF ALL REGISTERED MEMBERS ELIGIBLE TO VOTE	CITYWIDE VOTING HISTORY AS PERCENT OF ALL REGISTERED VOTERS
VOTERS NOV 2002	792	65.6%	42.0%
VOTERS NOV 2003	575	47.6%	25.3%
VOTERS SEP 2004	271	22.5%	5.2%
VOTERS NOV 2004	965	80.0%	62.0%
VOTERS NOV 2005	498	41.3%	23.3%
VOTERS SEP 2006	451	37.4%	21.2%
VOTERS NOV 2006	734	60.8%	45.1%

COMPARABLE STATISTICS		
	65.6%	42.0%
	47.6%	25.3%
	22.5%	5.2%
	80.0%	62.0%
	41.3%	23.3%
	37.4%	21.2%
	60.8%	45.1%

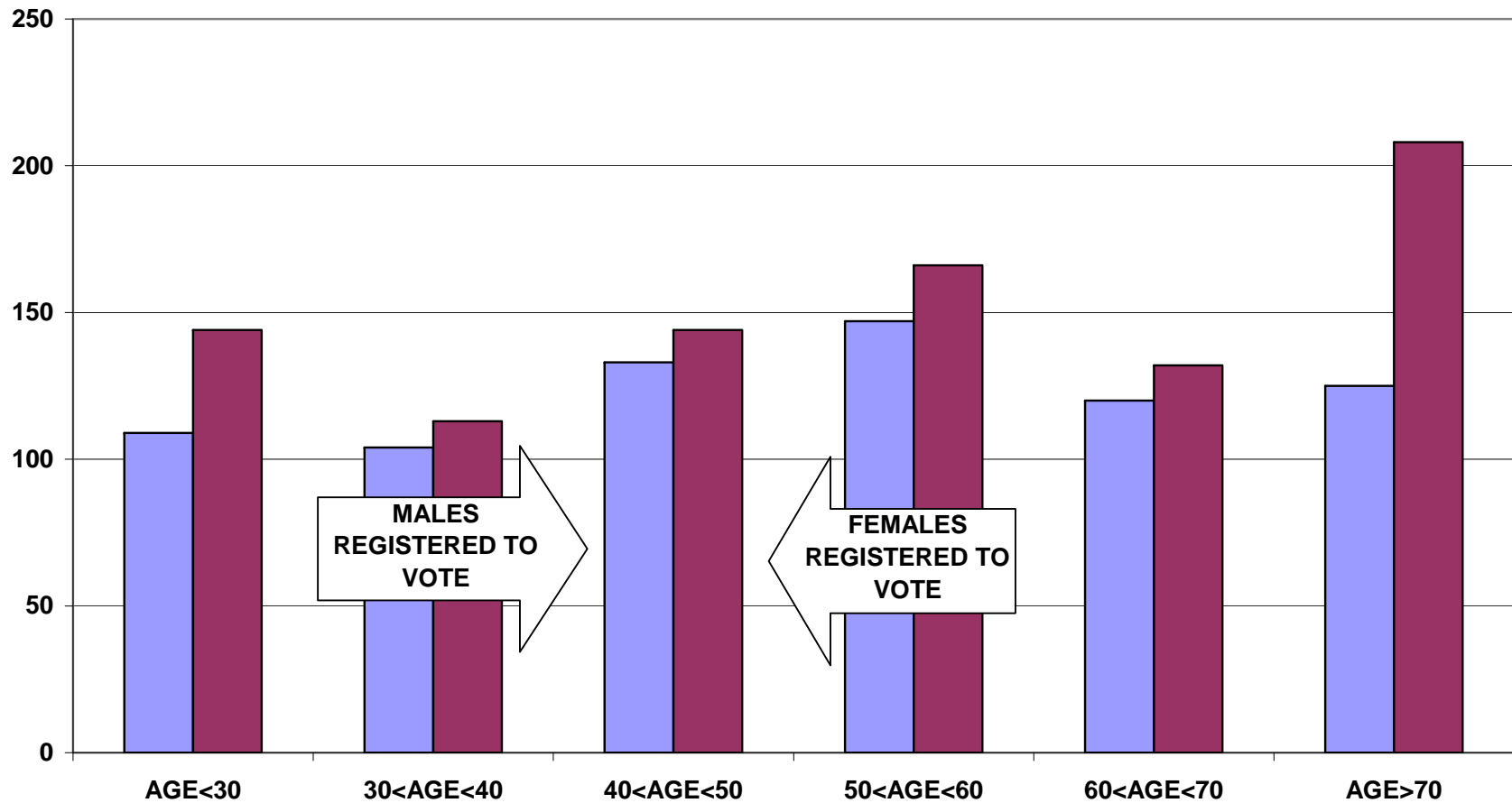
REGISTERED VOTER TURNOUT COMPARISON BETWEEN TAUNTON AND ST. ANTHONY HEADS OF HOUSEHOLD



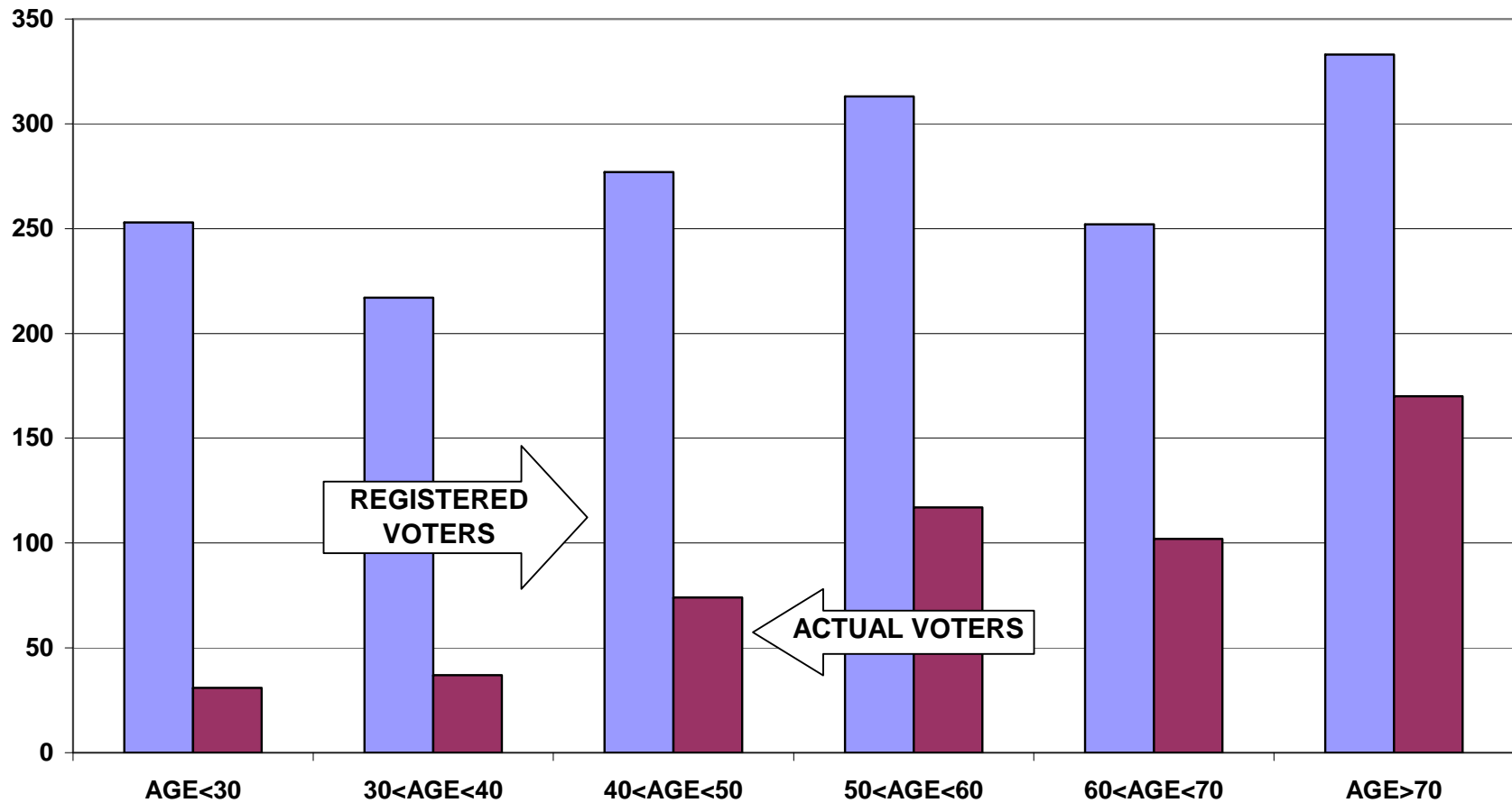
**DIFFERENCE IN VOTER TURNOUT BETWEEN
ST. ANTHONY VOTERS AND TAUNTON VOTERS
HEADS OF HOUSEHOLD**



**VOTER REGISTRATION BY AGE AND GENDER
ST. ANTHONY
ALL HOUSEHOLD MEMBERS**



**REGISTERED VOTERS VERSUS ACTUAL VOTERS SEPTEMBER 2006
ST. ANTHONY
ALL HOUSEHOLD MEMBERS**



**REGISTERED VOTERS VERSUS ACTUAL VOTERS NOVEMBER 2006
ST. ANTHONY
ALL HOUSEHOLD MEMBERS**

