

THE PORTUGUESE AMERICAN CITIZENSHIP PROJECT
A NON-PARTISAN INITIATIVE TO PROMOTE CITIZENSHIP AND CIVIC INVOLVEMENT



AMIGOS DE TERCEIRA
STATE OF RHODE ISLAND

EVALUATION
OF
THE 2006 ELECTIONS

August 1, 2007

SUPPORTED BY THE
LUSO-AMERICAN
FOUNDATION

REPORT CONTENTS

- **STATISTICS AND SUMMARY OF WORK** 3
- **RESULTS** 4
- **RECOMMENDATIONS** 7
- **APPENDIX** 8

KEY STATISTICS

- **Number of Members in Rhode Island: 989**
- **Heads of Household registered to vote in Rhode Island: 300**
- **All Household Members registered to vote in Rhode Island: 591**
- **Heads of Household voter turnout* in September 2006: 27% (statewide turnout 23%)**
- **Heads of Household voter turnout in November 2006: 69% (statewide turnout 57%)**

SUMMARY OF WORK

Amigos de Terceira has been an active participant in the Portuguese American Citizenship Project since late 2002.

For the September 2006 Primary Elections and the November 2006 General Elections, postcards in Portuguese and English were sent to every registered voter in the organization reminding them of the date, location, and polling hours for each election.

* Voter turnout is the number of citizens voting in an election divided by the total number of citizens registered to vote. Voter turnout for each election is based on Rhode Island residents only.

RESULTS

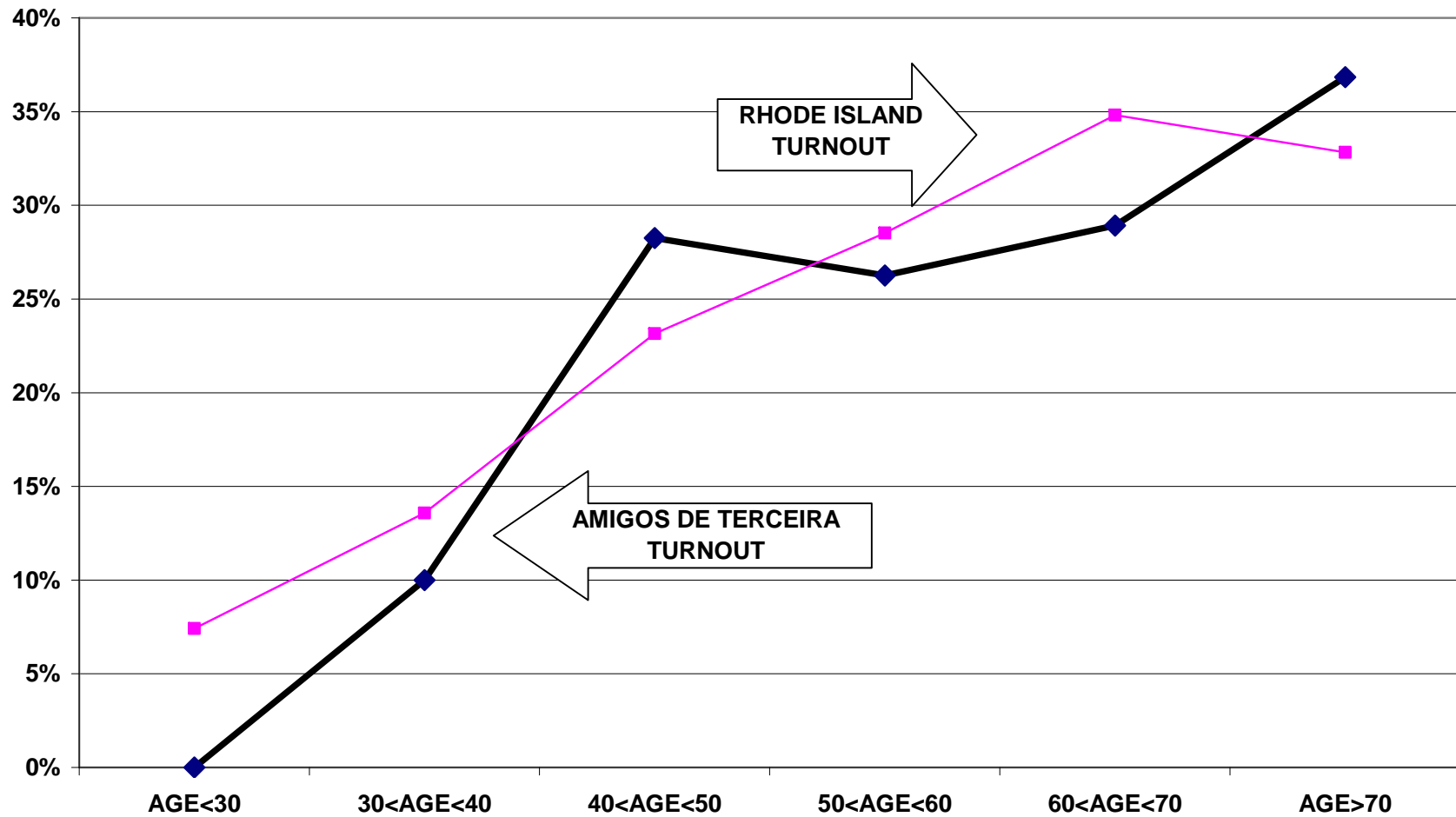
Amigos de Terceira's heads of household voter turnout was higher than the statewide turnout in the September 2006 Primary Election and the November 2006 General Election. Heads of household turnout for the September 2006 Primary Elections was 27%, as compared to the state turnout of 23%. Amigos de Terceira's heads of household turnout for the November 2006 General Election was 69%, as compared to the state turnout of 57%.

Voter turnout is not uniform across age groups. Voters under 30 years of age and even those between 30 and 40 years old had lower turnout rates than the older voters. This is true among all registered voters in the organization and among registered voters in the community at large.

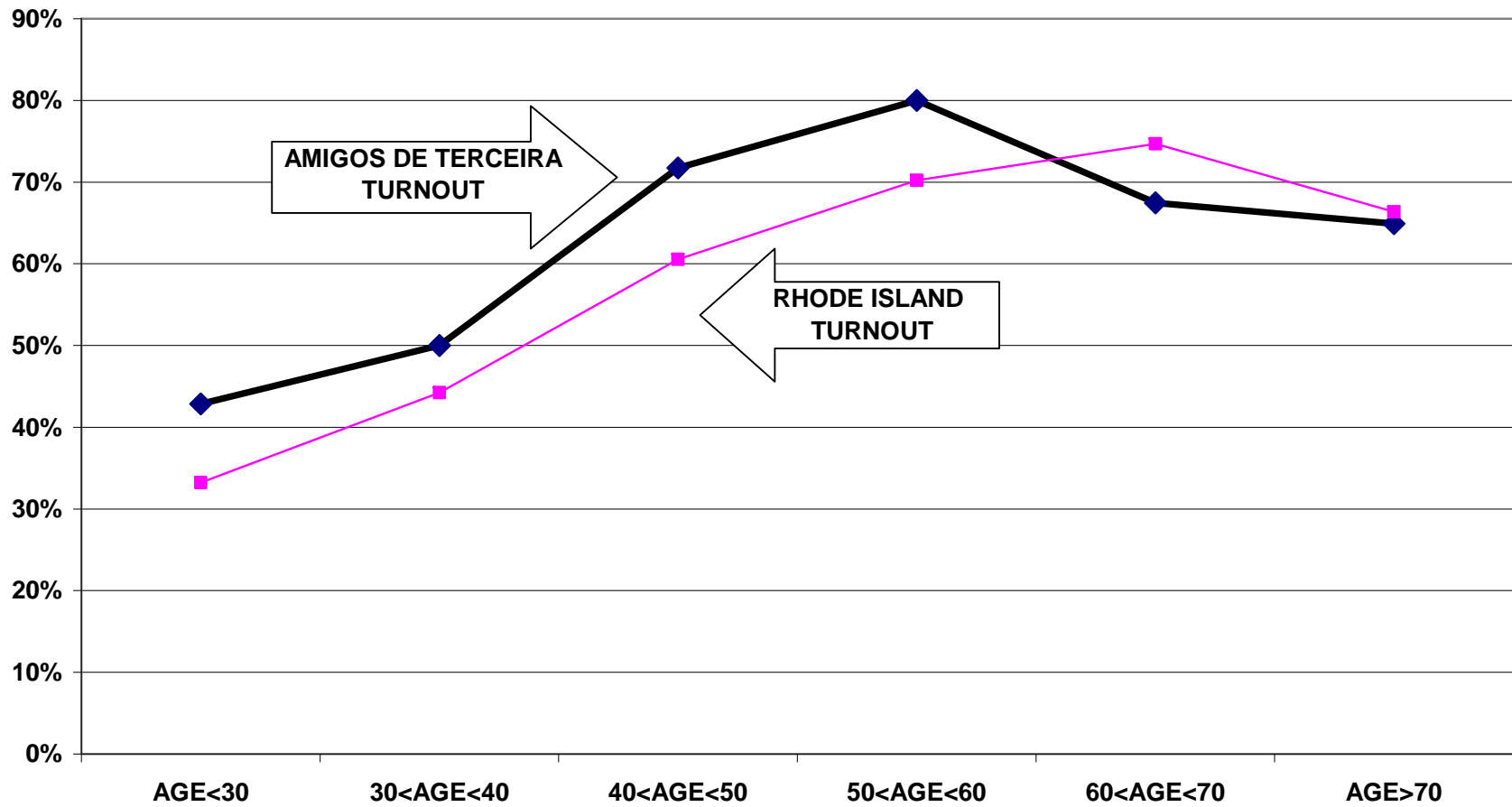
For example, registered voters that are associated with Amigos de Terceira under 30 years old had a 43% turnout rate in the November 2006 elections, while those between 60 and 70 years old had a 67% turnout rate.

The following graphs for the September and November 2006 elections illustrate the relationship between turnout rates and age. These graphs refer to all family members associated with the group, not just heads of household.

TURNOUT BY AGE SEPTEMBER 2006
AMIGOS DE TERCEIRA
ALL HOUSEHOLD MEMBERS



**TURNOUT BY AGE NOVEMBER 2006
AMIGOS DE TERCEIRA
ALL HOUSEHOLD MEMBERS**



RECOMMENDATIONS

- Amigos de Terceira should examine ways to increase overall voter turnout rate. While the organization has generally had higher voter turnout than the state overall, the difference between Amigos de Terceira's turnout and the Rhode Island turnout has decreased. Voters in the older categories consistently outvote the younger voter categories. This issue should be addressed so as to increase voting turnout for the younger age groups.
- The club leaders should also examine what measures it adopted in September 2002 to promote voter turnout – the club turnout was almost three times the state turnout during that election (57% turnout for the club versus 19% statewide turnout). Admittedly, the candidacy of a Portuguese American for governor gave members incentive to vote, but the leadership of the club, like many others in the state, took extraordinary steps to get their members to the polls. Elements of this effort should be examined as to their relevance to current campaigns.

APPENDIX

- Historical Data 9
- Registered Voter Turnout Bar Graph 10
- Difference in Voter Turnout Bar Graph 11
- Registered Voters vs. Actual Voters September 2006 Bar Graph 12
- Registered Voters vs. Actual Voters November 2006 Bar Graph 13

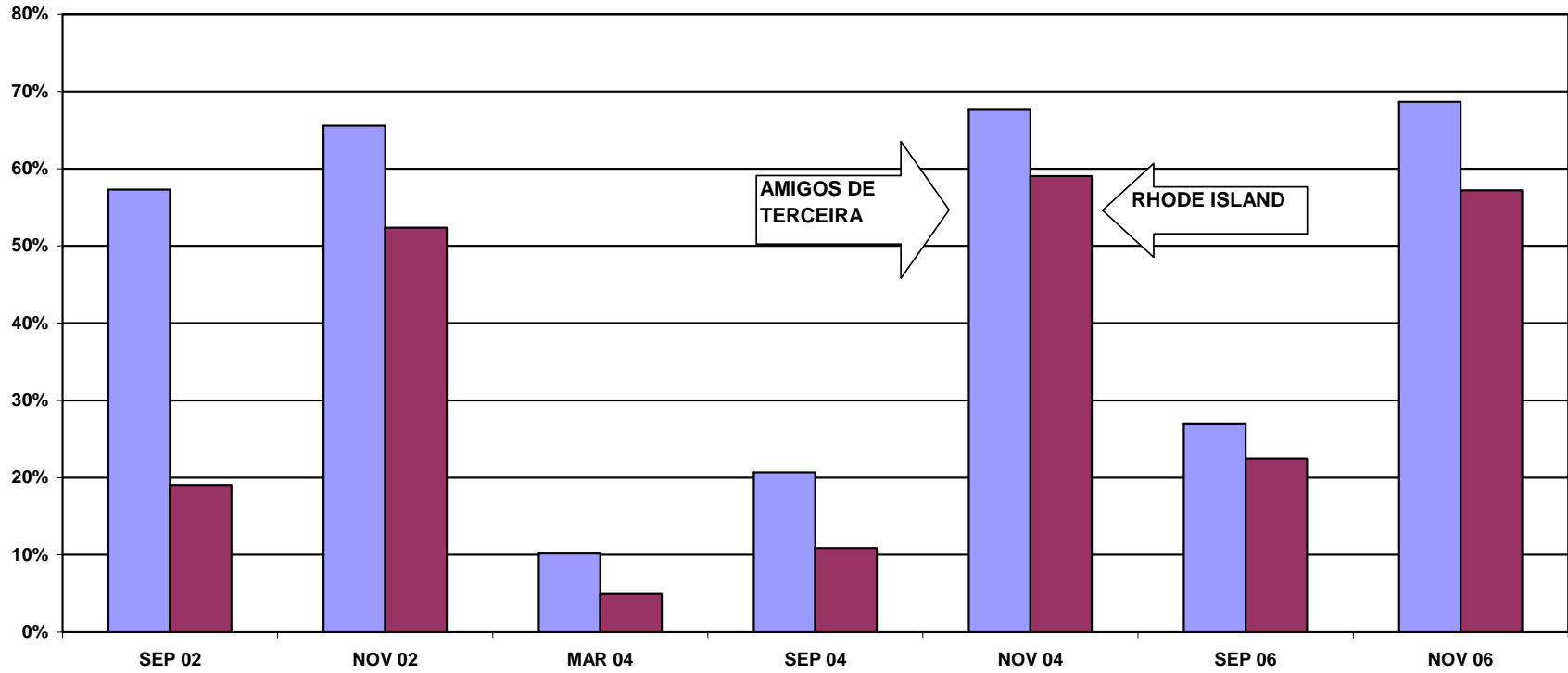
**HISTORICAL DATA: AMIGOS DE TERCEIRA
REGISTRATION - VOTING**

MEMBERS	989
MEMBERS REGISTERED TO VOTE IN RHODE ISLAND	300 HEADS OF HOUSEHOLD
	591 ALL FAMILY MEMBERS

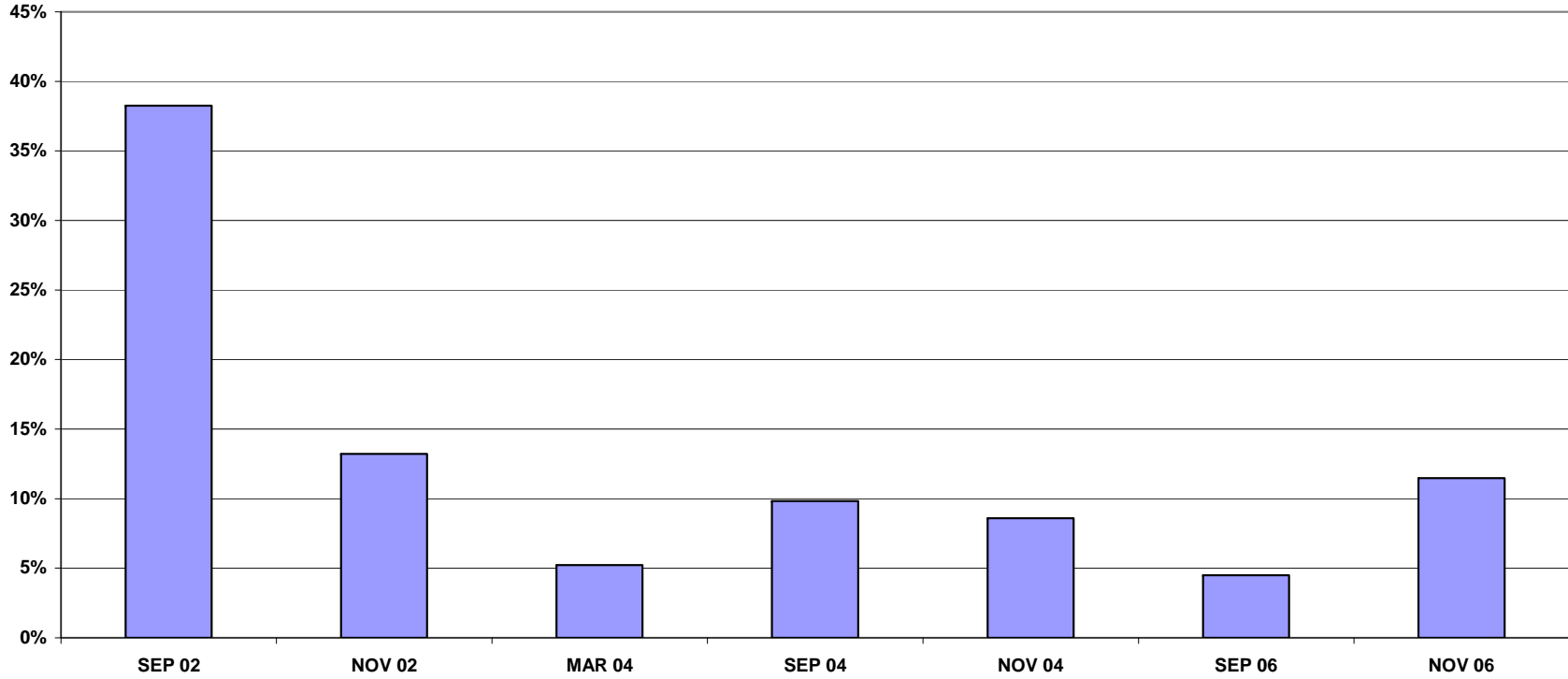
VOTING PERFORMANCE OF RHODE ISLAND RESIDENTS

	HEADS OF HOUSEHOLD	AS PERCENT OF ALL REGISTERED MEMBERS ELIGIBLE TO VOTE	STATEWIDE VOTING HISTORY AS PERCENT OF ALL REGISTERED VOTERS)
		COMPARABLE STATISTICS	
VOTERS SEP 2002	165	57.3%	19.0%
VOTERS NOV 2002	198	65.5%	52.3%
VOTERS MAR 2004	31	10.1%	4.9%
VOTERS SEP 2004	64	20.7%	10.9%
VOTERS NOV 2004	211	67.6%	59.0%
VOTERS SEP 2006	81	27.0%	22.5%
VOTERS NOV 2006	206	68.7%	52.7%

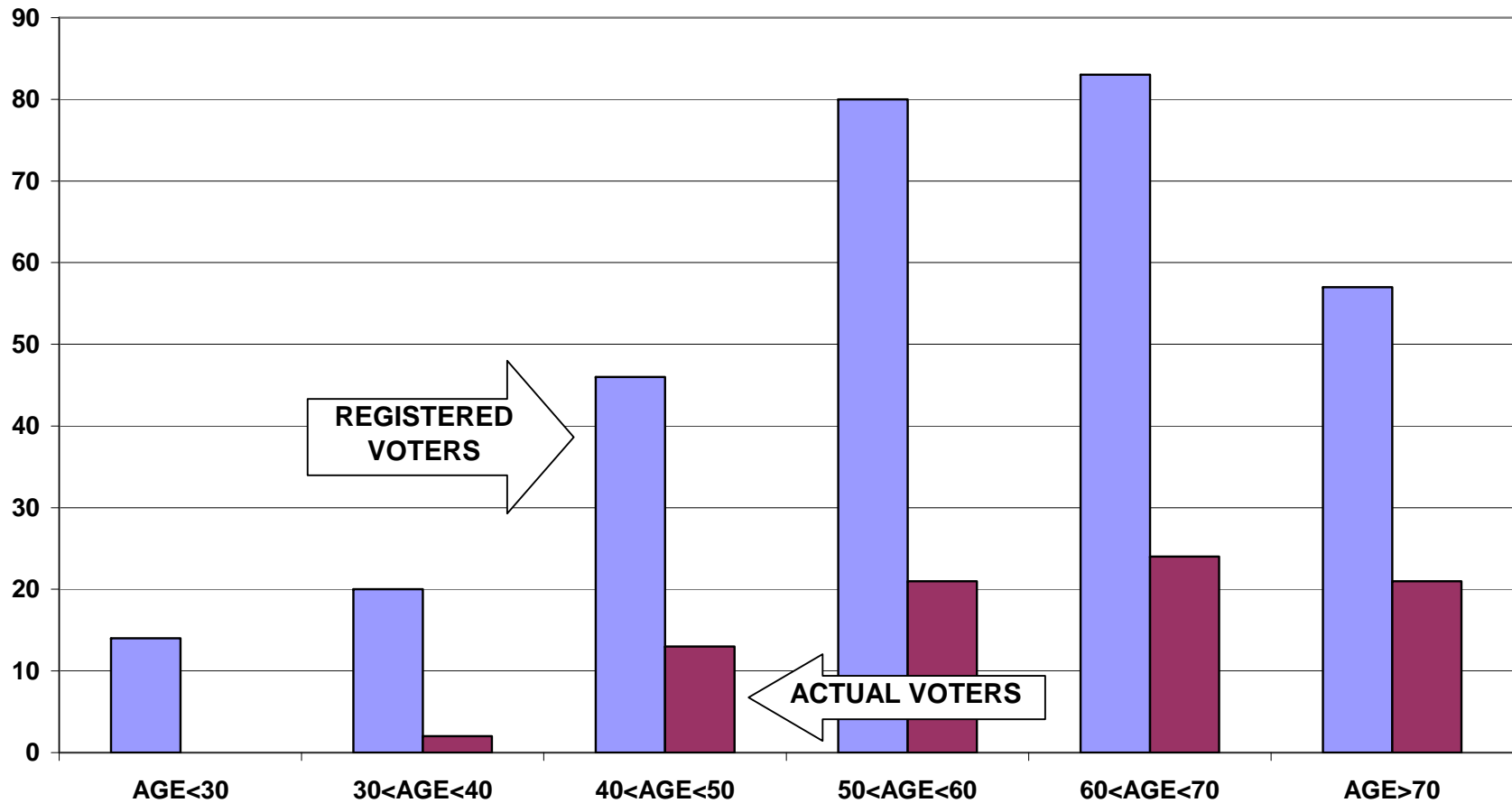
REGISTERED VOTER TURNOUT COMPARISON BETWEEN RHODE ISLAND AND AMIGOS DE TERCEIRA HEADS OF HOUSEHOLD



**DIFFERENCE IN VOTER TURNOUT BETWEEN
AMIGOS DE TERCEIRA VOTERS AND RHODE ISLAND VOTERS
HEADS OF HOUSEHOLD**



**REGISTERED VOTERS VERSUS ACTUAL VOTERS SEPTEMBER 2006
AMIGOS DE TERCEIRA
ALL HOUSEHOLD MEMBERS**



REGISTERED VOTERS VERSUS ACTUAL VOTERS NOVEMBER 2006
AMIGOS DE TERCEIRA
ALL HOUSEHOLD MEMBERS

