

The Portuguese American Citizenship Project

A non-partisan initiative to promote citizenship and civic involvement



**SACRED HEART PARISH
STATE OF RHODE ISLAND**

**EVALUATION
OF
THE 2006 ELECTIONS**

JUNE 25, 2007

supported by the

**LUSO-AMERICAN
FOUNDATION**

SUMMARY OF STATISTICS

There are an estimated 704 members of Sacred Heart Parish, counting heads of household and spouses who reside in the state of Rhode Island.

As of May 2007, forty percent of the heads of household members – 280 members – have been identified as registered to vote. If all members of the households are counted - that is adult children and seniors not listed as heads of household - there are an estimated total of 409 registered voters affiliated with the parish.

As shown in Part I, voter turnout for Sacred Heart exceeds the state of Rhode Island average. The Sacred Heart heads of household turnout for the November 2006 General Elections was 65 percent, as compared to the state turnout of 57 percent.

Part II contains graphs on voter turnout by age. Voter turnout is not uniform through the age groups. In the November 2006 General Elections, the voter turnout of all Sacred Heart Parish voters consistently increased with age. For example, voters under 30 years old had a 46 percent turnout in the November 2006 elections, while voters between 50 and 60 years old had a 74 percent turnout.

**SACRED HEART
REGISTRATION - VOTING**

MEMBERS	704	
MEMBERS REGISTERED TO VOTE IN STATE OF RHODE ISLAND	280	HEADS OF HOUSEHOLD
	409	ALL FAMILY MEMBERS

VOTING PERFORMANCE OF RHODE ISLAND RESIDENTS

MEMBERS VOTING	AS PERCENT OF ALL REGISTERED MEMBERS ELIGIBLE TO VOTE	STATE WIDE VOTING HISTORY (AS PERCENT OF ALL REGISTERED VOTERS)
-----------------------	--	--

VOTERS MAR 2000	70
VOTERS SEP 2000	81
VOTERS NOV 2000	220
VOTERS SEP 2002	170
VOTERS NOV 2002	207
VOTERS MAR 2004	40
VOTERS SEP 2004	84
VOTERS NOV 2004	229
VOTERS SEP 2006	109
VOTERS NOV 2006	183

COMPARABLE STATISTICS		
	28.8%	14.1%
	32.1%	13.3%
	85.6%	58.6%
	59.0%	19.0%
	71.6%	52.3%
	13.5%	4.9%
	28.0%	10.9%
	76.3%	59.0%
	38.9%	22.5%
	65.4%	57.2%

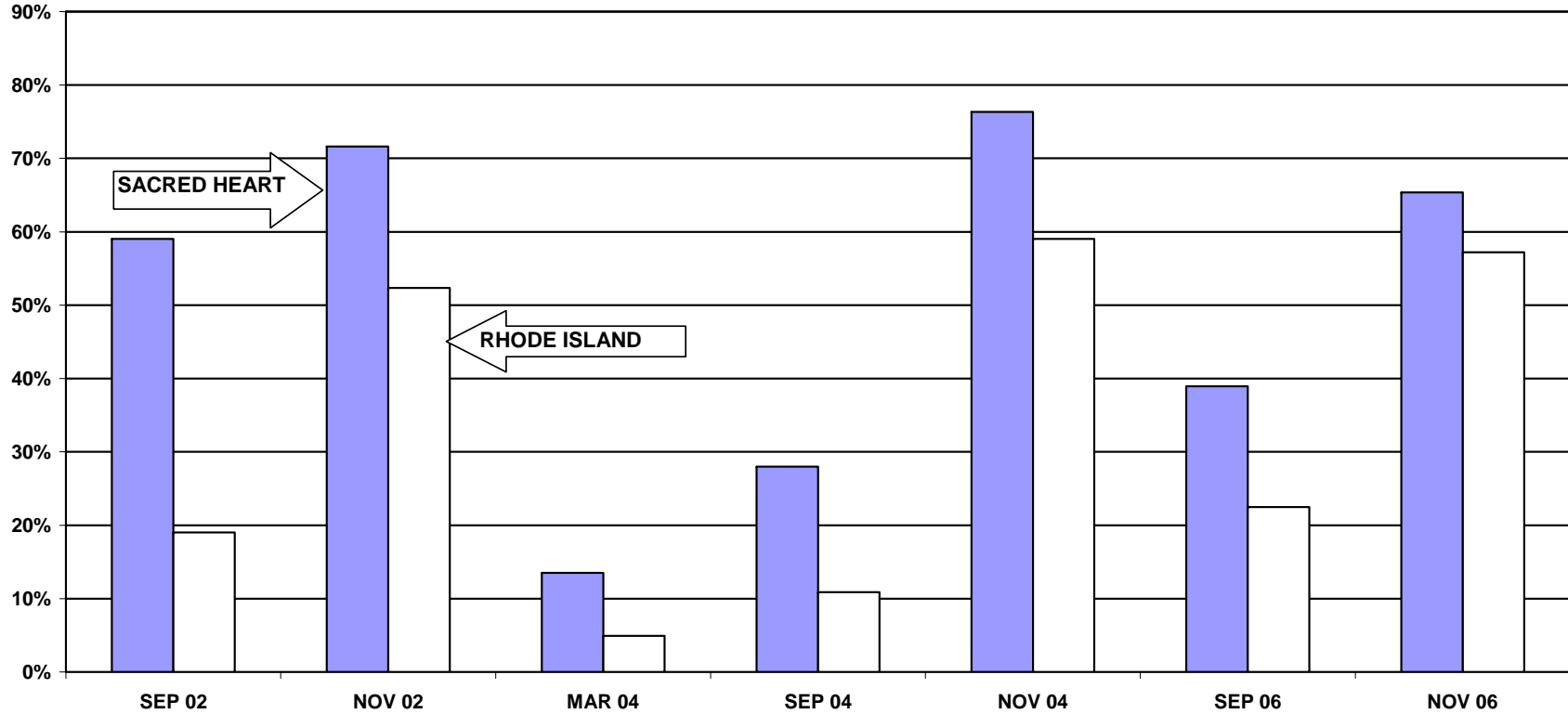
Note: Voting statistics for all elections are based only on voters registered as of May 2007. These statistics cannot be compared to official voter turnout reports which are based on a different registered voter population.

PART I.

**SACRED HEART PARISH HEADS OF HOUSEHOLD TURNOUT
COMPARED TO THE STATE**

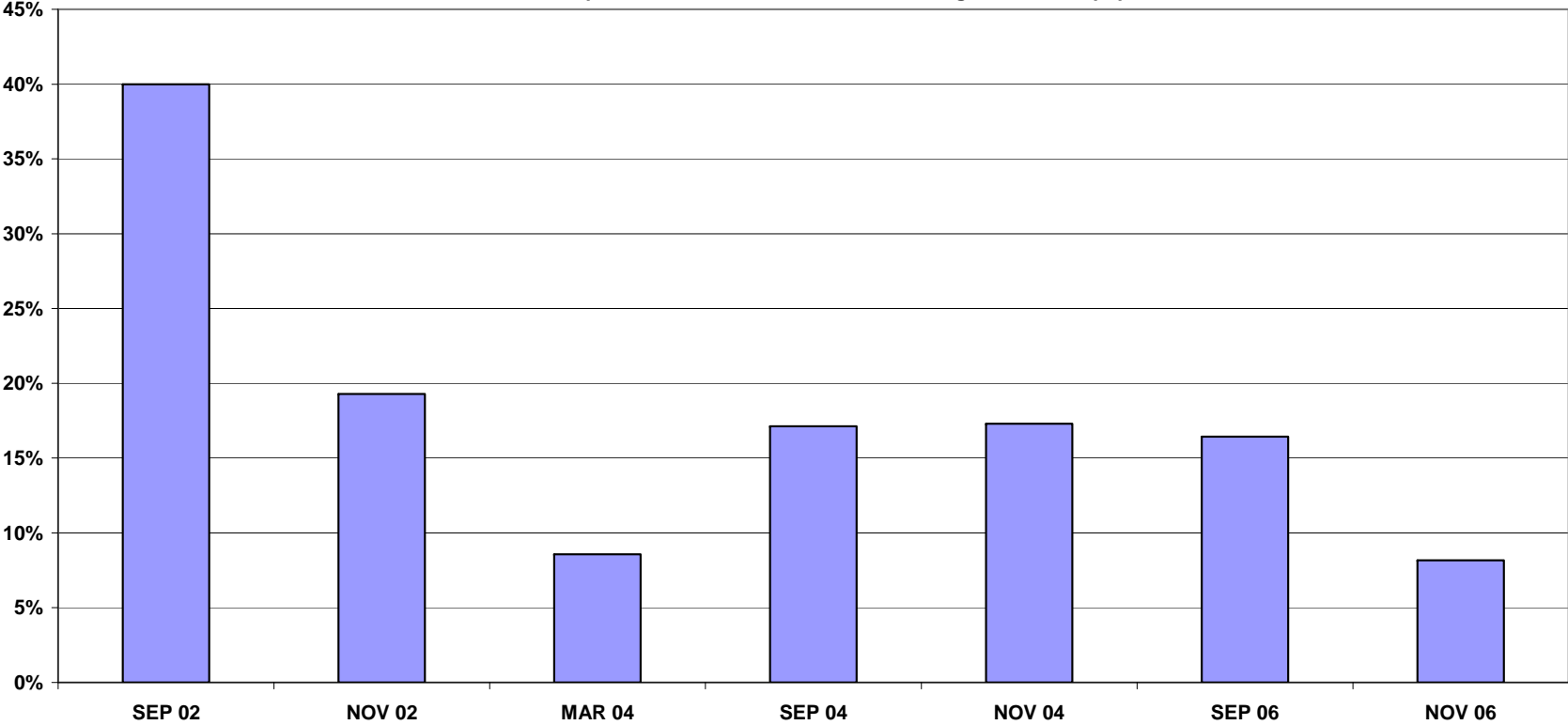
SACRED HEART PARISH VOTER TURNOUT

Note: Voting statistics for all elections are based only on voters registered as of May 2007. These statistics cannot be compared to official voter turnout reports which are based on a different registered voter population



SACRED HEART PARISH DIFFERENCE BETWEEN MEMBER TURNOUT AND CITY AVERAGE

Note: Voting statistics for all elections are based only on voters registered as of May 2007. These statistics cannot be compared to official voter turnout reports which are based on a different registered voter population

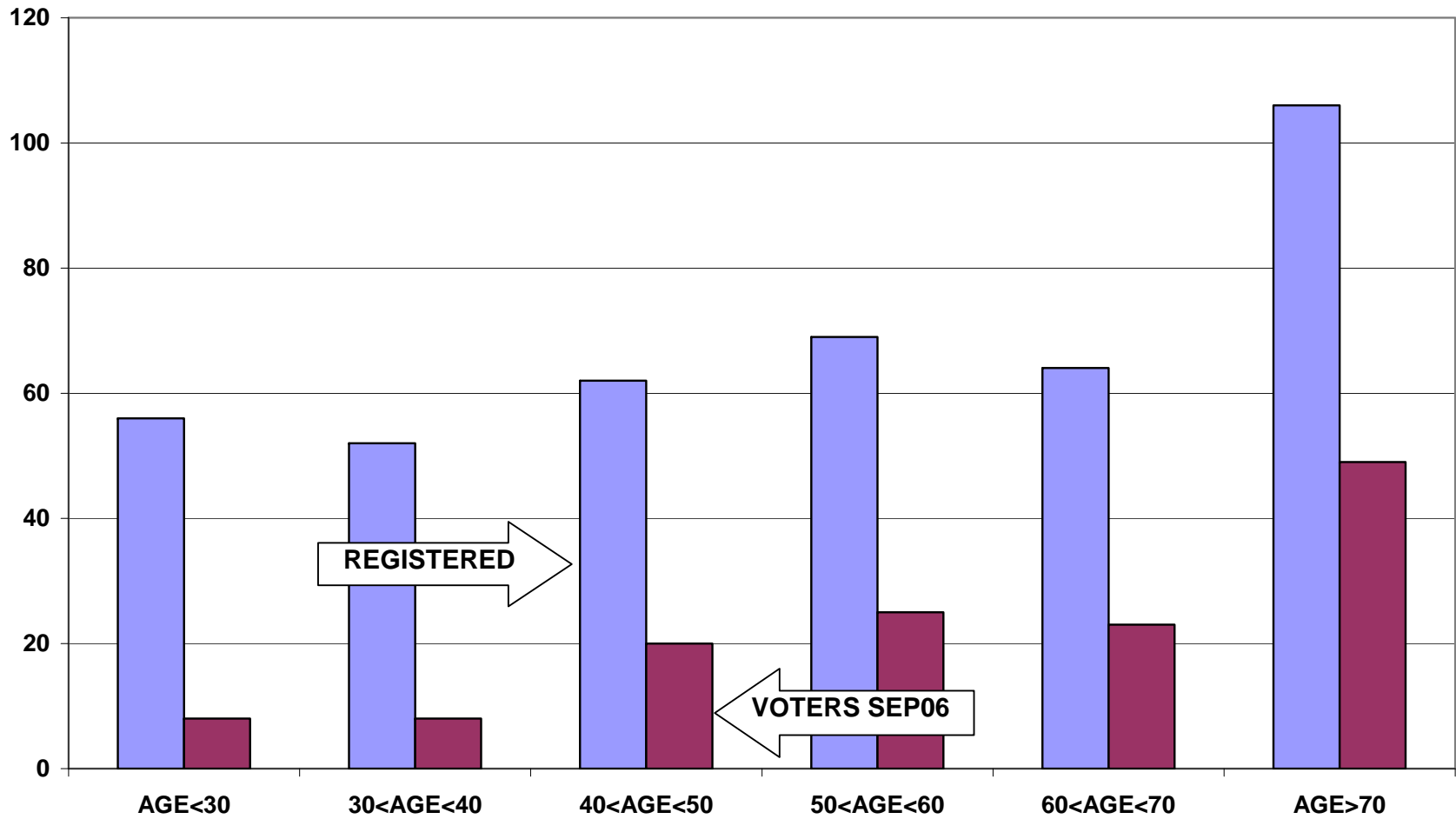


PART II.

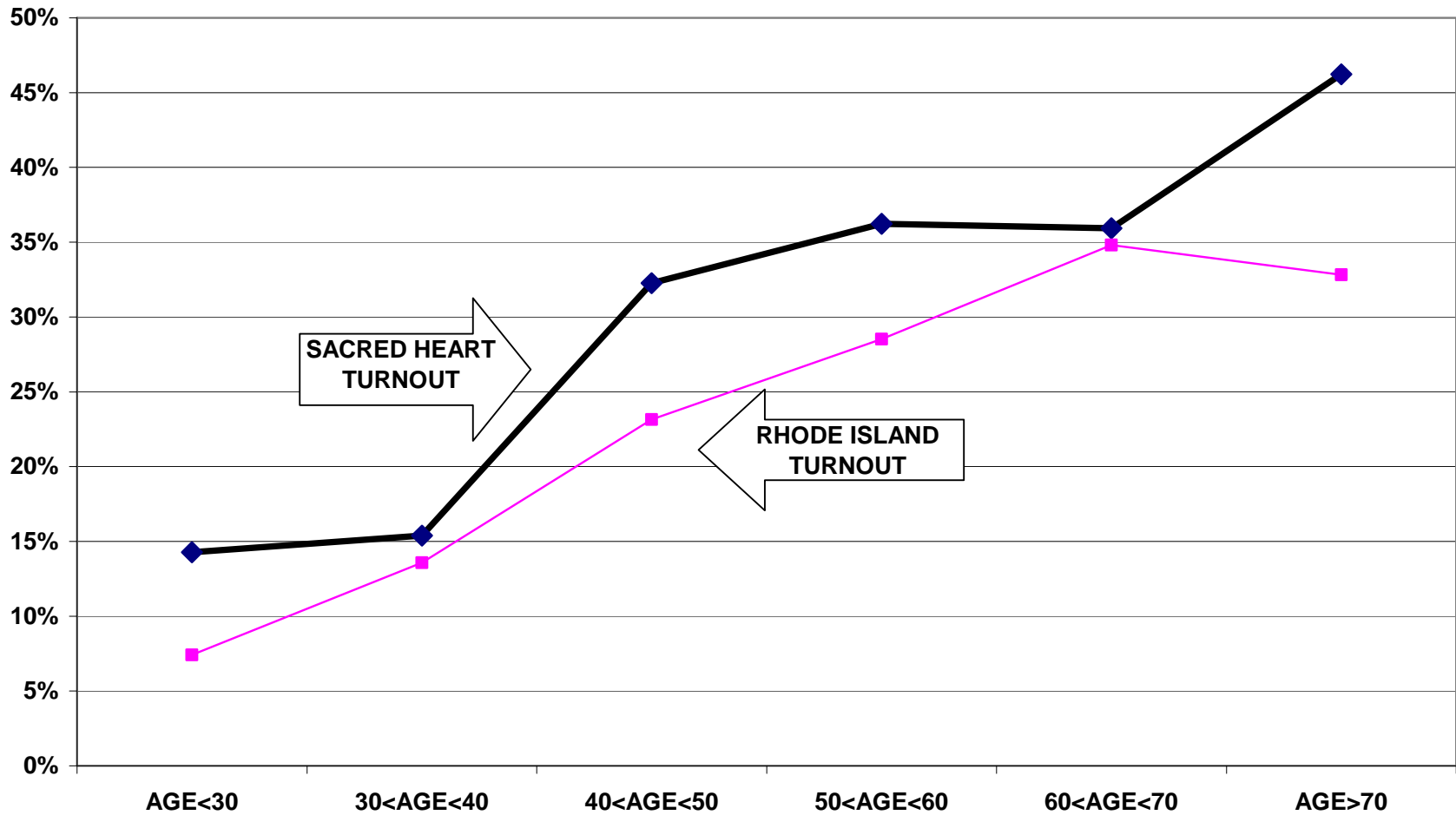
**ALL VOTERS ASSOCIATED WITH
SACRED HEART PARISH:**

TURNOUT GRAPHS BY AGE

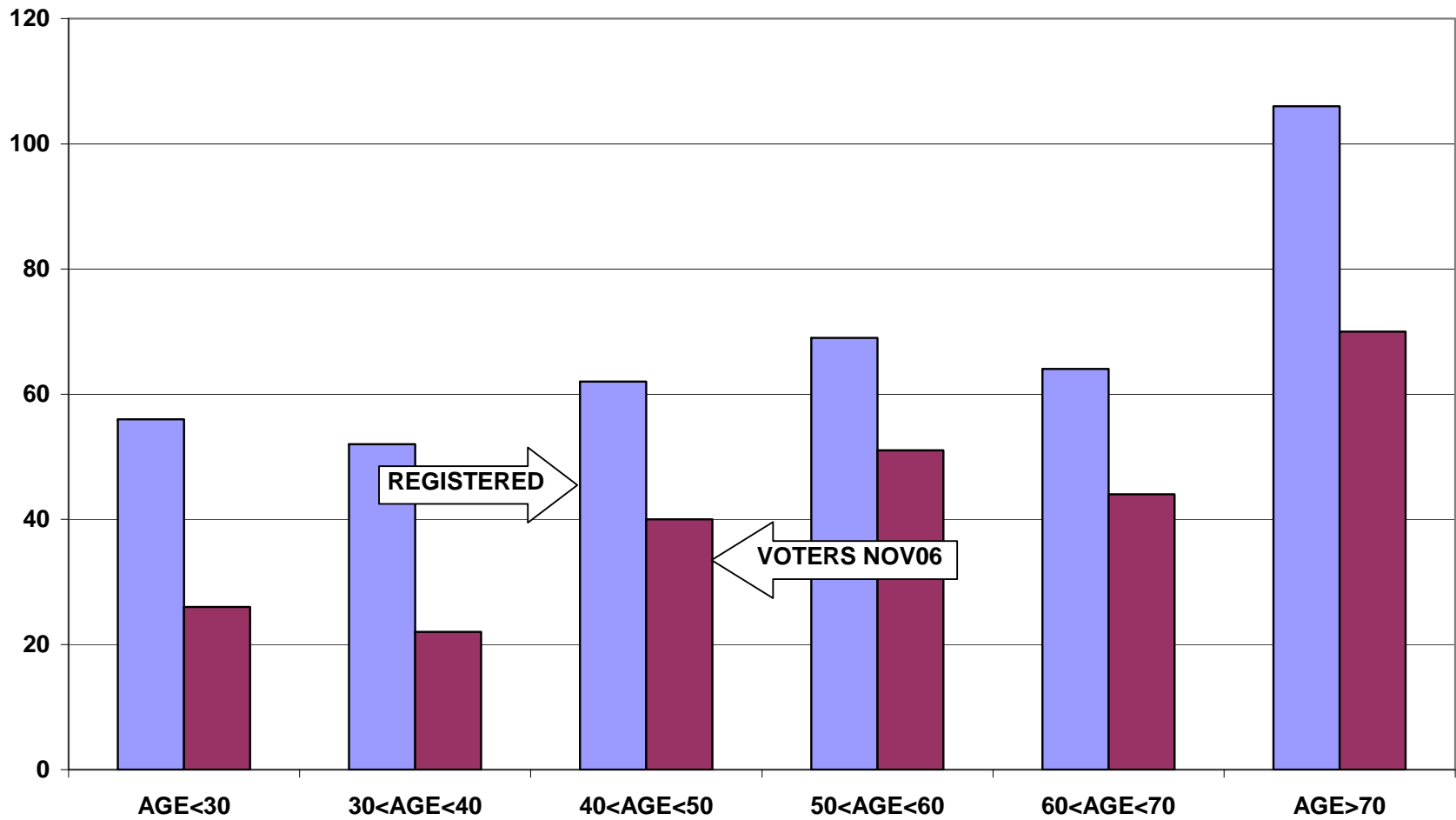
**SACRED HEART PARISH, PAWTUCKET, RI
REGISTERED VOTERS VERSUS VOTERS SEP06**



SACRED HEART PARISH, PAWTUCKET, RI TURNOUT SEP06 TURNOUT BY AGE



**SACRED HEART, PAWTUCKET, RI
REGISTERED VOTERS VERSUS VOTERS NOV06**



SACRED HEART PARISH, PAWTUCKET, RI TURNOUT NOV06 TURNOUT BY AGE

